

Ernitec EVR 5000series

Hybrid DVR and NVR recorders



Ernitec EVR software has evolved over years based on true customer needs in video surveillance. This has resulted in an intuitive and powerful solution, fulfilling all imaginable surveillance needs.

Key highlights of the Ernitec EVR software solution include:

- *Plug and Play installation, up to 80% faster than normal IP systems*
- *True hybrid solution, with built-in support for both IP and analog cameras, provides seamless transition path from analog to network surveillance*
- *Intuitive and easy to use applications for local or remote monitoring, search, playback and export of video content*
- *Full-featured mobile and web clients provide network optimized access to surveillance footage whenever needed, independent of your location*

Proven and reliable

The Ernitec EVR5000 series's reliability has been proven through tens of thousands of successful installations around the world.

It provides peace-of-mind for system administrators through built-in software components - such as Watchdog, System Monitor and Performance Scanner - that ensure trouble free, continuous operation with best performance.

The system is able to proactively inform about any potential malfunctions, such as system overheating or hard disk failure

features like; Dual system hard disk, Redundant PSU, Hot-plug Fans and Storage RAID are standard features on EVR5000 series

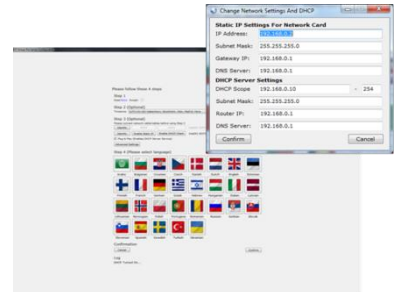
Specification

Plug and Play installation solution

The unique Plug and Play interface give the installer the opportunity to 29 different languages, time zone IP adresse for all cameras and recorders with just a few steps.

This wil make the installation op to 80% faster than normal IP installations.

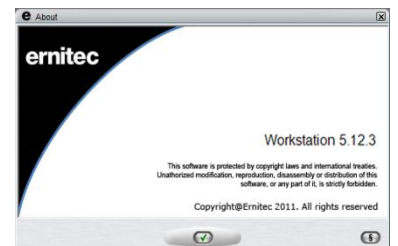
"3 step installation" install the hardware, select Plug and Play in the install GUI, search camera. Now the recorder is recording



Open platform

Unlike many other network video recorder solutions, Ernitec EVR4000 series is a fully open and resolution independent platform that is easy to connect to other systems and devices. It is easy to integrate with other systems, such as access control or POS, through the use of open Software Development Kit (SDK) or Universal Data Driver.

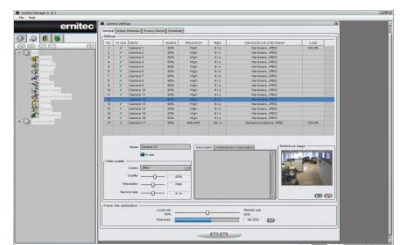
The EVR software supports natively an immense range of cameras from all the leading camera manufactures, providing the customers with freedom to choose the most suitable camera for any purpose. This is even further enhanced through the support for industry standards in this area, such as ONVIF



Recording

Recording of MJPEG, MPEG-4, and H.264 video from IP cameras/ encoders, H.264 video from Analog cameras , 16 channels audio, and text data to 32 channels per recorder. Resolution independent and especially designed for high resolutions.

Supported cameras: Supports a wide range of IP cameras and IP video servers from the leading camera manufacturers. Generic support for ACTi, Arecont Vision, Axis, Bosch, Elmo, Ernitec, Hikvision, IQEye, JVC, Messoa, Mobotix, Panasonic, Pelco, Pixord, Samsung, Sanyo, Seorim, Sony, Vido, Vivotek cameras etc.



Specification

Local & Remote Monitoring

Live view and playback: Through the EVR Workstation application locally and over a network or through a web browser using EVR WebClient

Layouts: Different types of ready-made layouts and the option to save your own layouts.

Maps: Navigate target sites and access devices on the sites through multi-layered maps.

Camera tours: Display video from one camera at a time and automatically switch to the next camera.



Search & Export

Advanced search tools: Graphical Activity Search, Motion Search, Date & Time Search, Text Search, Alarm Search.

Image export: Single images as JPEG, GIF, TIFF, PNG, and BMP files

Video export: Video image as AVI, Matroska (MKV), and ASF (WMV) files

Original video clip authentication: With stand-alone EVR Media Player.

System Diagnostics

Log files: System events, user actions, errors, alarms, watchdog events.

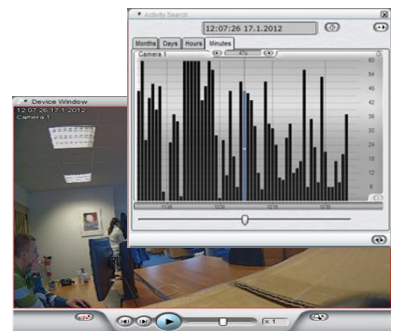
Performance scanner: CPU, memory, network, and hard disk usage.

Storage display: The amount of recordings per each camera and total hard disk usage.

Software watchdog: User notification by e-mail or digital output about system events, e.g. hard disk failure.

System Monitor: Monitor the status of the system without opening any applications.

Alarm Events



3 year Warranty

All systems is design with hot-swap parts for easily maintains for the installer.

Upfront advance replacement on hot-swap parts e.g. hard disk, fans, power supplies etc. in the warranty period

For not hot-swap components the repair is don in the Ernitec repair facility so the recorder can be carefully tested before shipment back to the customer



Specification

Features	EVR 5016H		EVR5016NL	EVR5016N	EVR5032N
Part number	0064-05001		0064-05003	0064-05004	0064-05005
Compression algorithm	Enhanced H264, hardware compression		JPEG, MPEG-4 , H264		
# of camera inputs	16 ch		-	-	
# of IP camera inputs / upgrade op to 50 ch	1 ip ch		16 ip ch		32 ip ch
Max Image size	720x576 / 3648x2752		3648x2752		
Recording frame rate at resolution 352 x 288, fps @	Max.400(PAL)		-		
Recording frame rate at resolution 720 x 288, fps @	Max. 400(PAL)		-		
Recording frame rate at resolution 720 x 576, fps @	Max.400(PAL)		-		
Recording frame rate at resolution 1280 x 720, fps @	Max. 800(PAL)		Max. 1.000(PAL)		
Frame rate for monitoring	400 fps (PAL)		-		
Analogue loop video output	yes, BNC		-		
# of sensor inputs	16		option		
# of alarm outputs	16		option		
Sound Recording (line input)	16 channels		2 channels		
IP Sound Recording	1 channel per IP channel (max 64 channels)				
Multi-screen playback	Yes (up to 16 screen mode)				
Universal Plug and Play installation	Yes				
Event log & search	Yes				
Pan/tilt/zoom & pre-set control	Yes				
Access control by password	Yes				
Individual file encryption	Yes				
Still image to DVD or USB	Yes (JPEG, BMP format)				
Remote transmission	Live view, playback, backup, export				
Remote control	Pan/tilt/zoom, preset, aux devices, alarm, screen display, event view, I/O				
File backup	DVD-RW or USB				
System Hard drive	1+1 RAID 1				
Storage	16TB		10TB	16TB	24TB
Hot Swap bay	16		8	16	
Hot plug Fan	5		3	5	
RAID Controller	0,1, 1EE, 5, 5EE, 10, 50, 60 + hot spare				
Network Card	2x Gigabit LAN ports				
USB ports	2x USB 3.0 + 12x USB 2.0				
Keyboard / mouse	1x PS/2 shared connector				
Monitor output	1x VGA, 1x DVI, 1x HDMI (op to 2560x 1600)				
Auto-rebooting after power failure	Yes				
Form Factor	19" 3U RACK		19" 2U RACK	19" 3U RACK	
Dimensions (HxWxD mm)	132x437x648		89x437x648	132x437x648	
Weight	37,0 KG		28,5 KG	36,5 KG	41,0 KG
Operation conditions	Temperature range from +5°C to +40°C				
Power requirements	115 - 230V AC/50Hz/550W				
Languages	25 including : English, German, French, Spanish, Dutch, Danish, Italian, Finnish				