

## Upgrade camera firmware So it works on an old MicroView NVR

1. Insure the NVR has the latest firmware
2. Download MicroView IP Tool
3. Download Firmware
4. Activate Camera
5. Give camera an static IP Address
6. Login to the camera
7. Update the camera
8. Reset camera to standard factory
9. Connect camera to NVR



### 1. Check Firmware on NVR

For this example we are using MVINVR-08POE which has the latest firmware version V3.0.18, BUILD 160415

Device Info	Camera	Record	Alarm	Network	HDD
Device Name	Embedded Net DVR				
Model	NVR08				
Serial No.	0820141108AARR486217633WCVU				
Firmware Version	V3.0.18, Build 160415				

### 2. Download MicroView IP Tool

Go to Ernitec.com under products choose MicroView By Ernitec, choose any camera and click on it . Click on the software button and the IP Tool will download automatic.

MicroView  
by ernitec



#### MVID-03IR-E

- Up to 2 Megapixel Full HD
- 1/2.7" Progressive scan CMOS
- Dual Stream
- 2.7 - 12mm Varifocal Motor lens
- Digital Wide Dynamic Range
- 3D Digital Noise Reduction
- DC12V & PoE
- Support H.264+
- IP67 Weather-Proof Protection
- IK10 Impact Protection
- Upto 30m IR range
- Built-in Micro SD card slot
- 3-axis adjustment
- 3 year Warranty

- Data Sheet PDF
- Quick Guide
- Manual
- Software

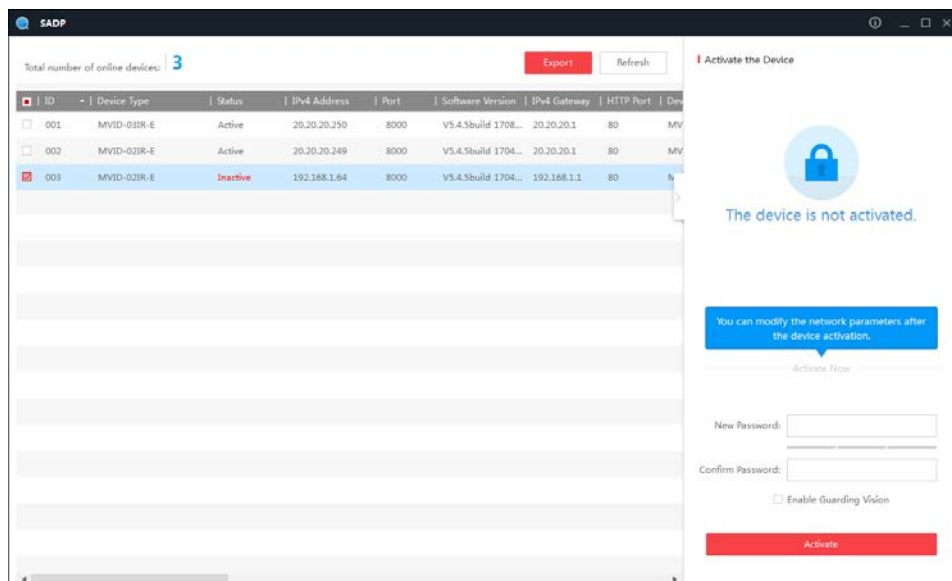
### 3. Download Firmware

You can download all available firmwares on the ernitec.com website using this link :

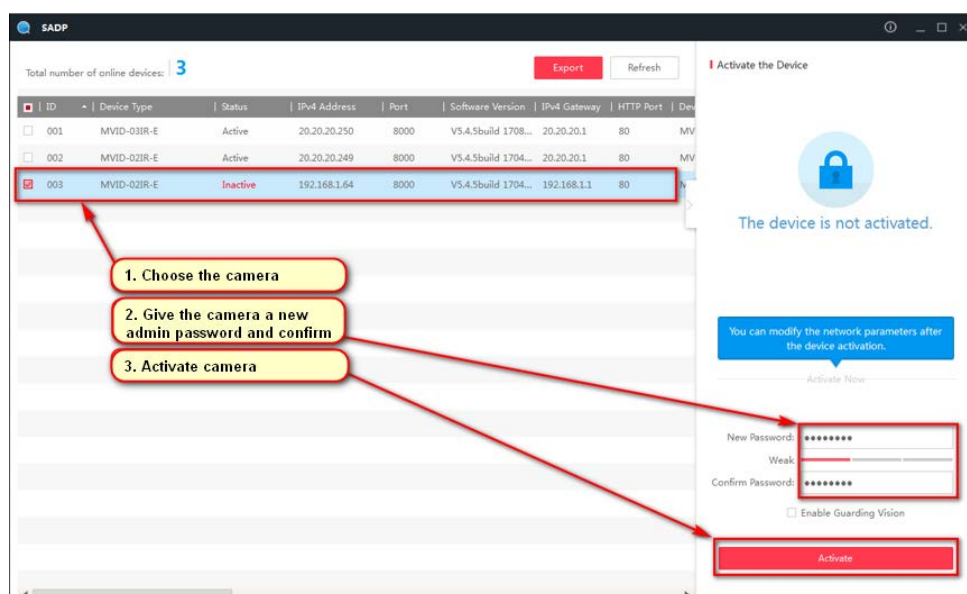
[https://files.ernitec.com/55\\_MicroView\\_By\\_Ernitec](https://files.ernitec.com/55_MicroView_By_Ernitec)

### 4. Activate Camera

Connect your camera to your PC with a switch and launch the IP tool and you will see an inactive camera..



Follow the 3 guidelines on the picture and the camera is activated.. If you have activated the camera just login And upgrade the camera.



## 5. Change the cameras IP address

Follow the guides on the picture and you will set a static IP address in the camera

Total number of online devices: 3

ID	Device Type	Status	IPv4 Address	Port	Software Version	IPv4 Gateway	HTTP Port	Dev
001	MVID-03IR-E	Active	20.20.20.250	8000	V5.4.5build 1708...	20.20.20.1	80	MV
002	MVID-02IR-E	Active	20.20.20.249	8000	V5.4.5build 1704...	20.20.20.1	80	MV
003	MVID-02IR-E	Active	20.20.20.148	8000	V5.4.5build 1704...	20.20.20.1	80	N

**1. Change the camera IP to one in the same range as your PC**

**2. Change the submask**

**3. Changing the gateway is only important if you are going online... But it cannot be empty**

**4. Press Modify, you might need to re-enter the admin password**

Modify Network Parameters

Enable DHCP

Enable Guarding Vision

Device Serial No: MVID-02IR-E20170608AAWR7748

IP Address: 20.20.20.148

Port: 8000

Subnet Mask: 255.255.255.0

Gateway: 20.20.20.1

IPv6 Address: =

IPv6 Gateway: =

IPv6 Prefix Length: 64

HTTP Port: 80

Security Verification

Admin Password: \*\*\*\*\*

Modify

Forgot Password

Click on the IP address and open a browser use Internet Explorer

Total number of online devices: 3

ID	Device Type	Status	IPv4 Address	Port	Software Version	IPv4 Gateway	HTTP Port	Dev
001	MVID-03IR-E	Active	20.20.20.250	8000	V5.4.5build 1708...	20.20.20.1	80	MV
002	MVID-02IR-E	Active	20.20.20.249	8000	V5.4.5build 1704...	20.20.20.1	80	MV
003	MVID-02IR-E	Active	20.20.20.148	8000	V5.4.5build 1704...	20.20.20.1	80	N

**1. Press on the camera IP and it will open a browser for you.. Use Internet Explorer..**

Modify Network Parameters

Enable DHCP

Enable Guarding Vision

Device Serial No: MVID-02IR-E20170608AAWR7748

IP Address: 20.20.20.148

Port: 8000

Subnet Mask: 255.255.255.0

Gateway: 20.20.20.1

IPv6 Address: =

IPv6 Gateway: =

IPv6 Prefix Length: 64

HTTP Port: 80

Security Verification

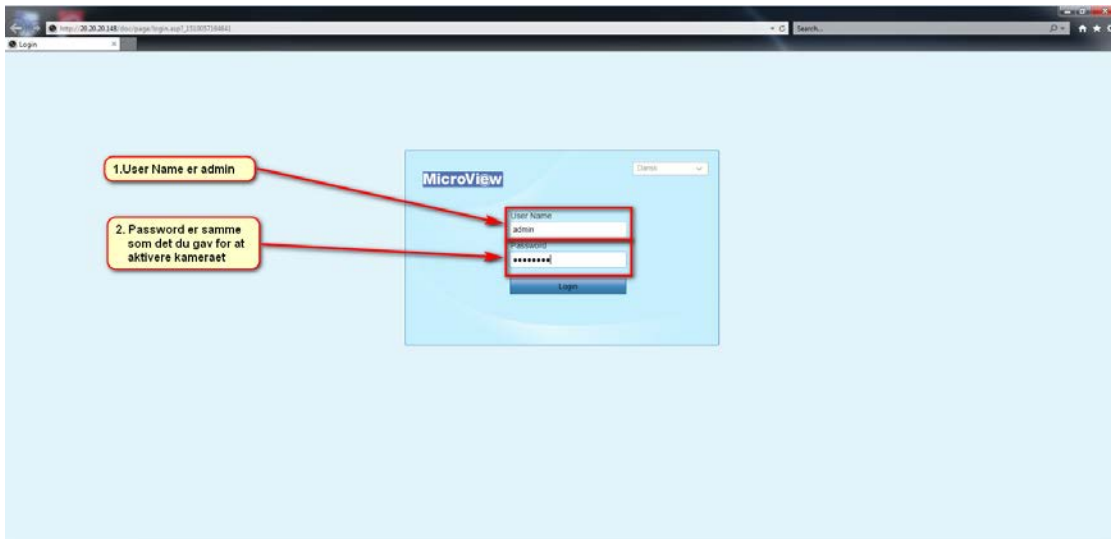
Admin Password: \*\*\*\*\*

Modify

Forgot Password

## 6. Login to Camera

User is admin and the password is the same you gave the camera when activating it..

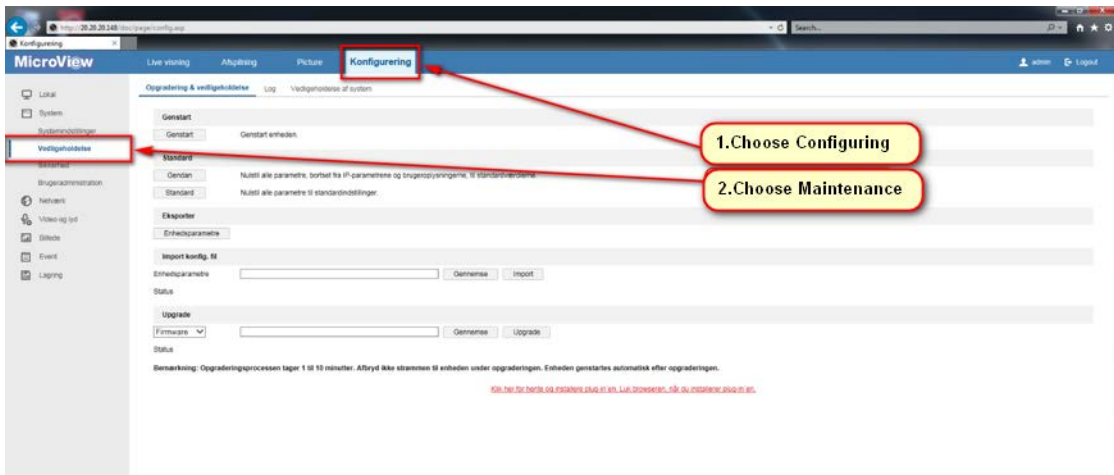


You will be asked to install a plugin on your browser this will allow you to see pictures in the WEB IO, you now have to go to Configuring and Maintenance



## 7. Upgrade the firmware

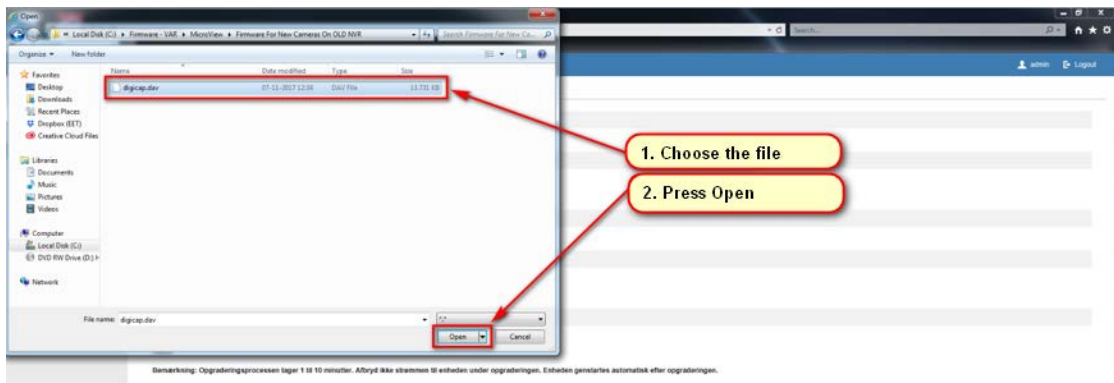
Go to Configuring and maintenance to get to the menu where you upgrade the firmware (it will in your local language)



Now select the new firmware file



Select the file and press open

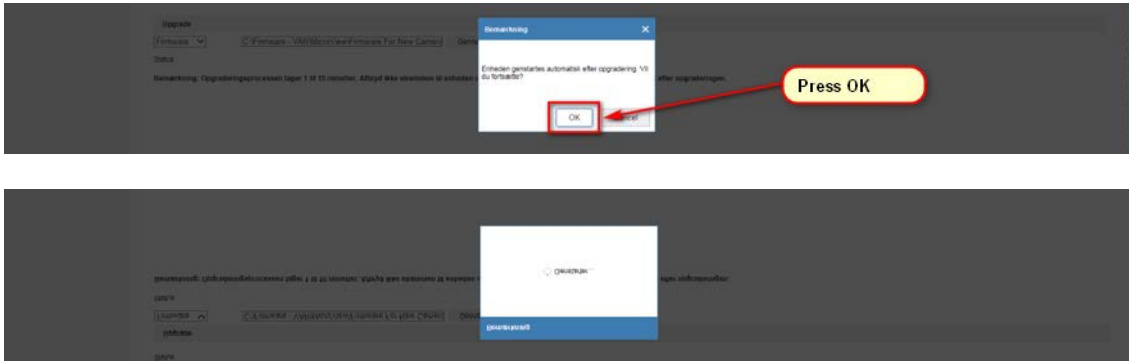


Press Upgrade and the upgrade will start



## 8. Upgrade Firmware

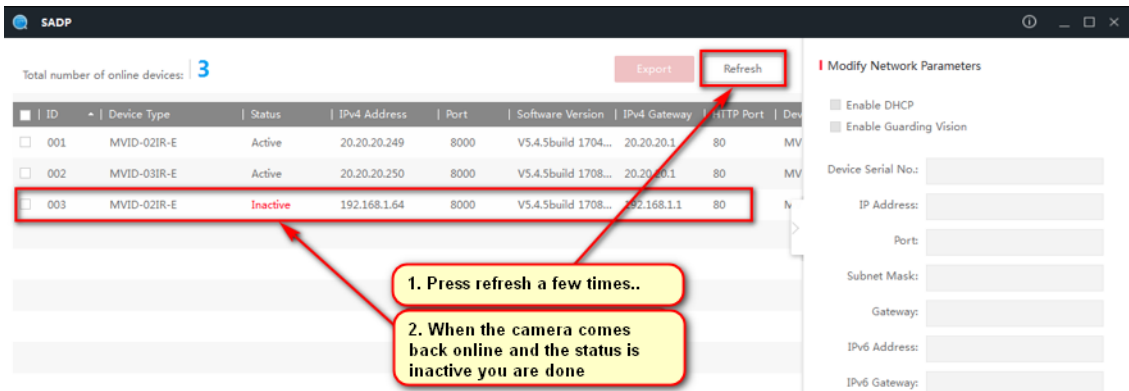
The upgrade will start and you will see it initializing then start counting, after the upgrade the camera will reboot



When the camera has rebooted you have to reset it to factory STANDARD mode



The camera will reboot again and when it has started you can close your browser and return to the IP tool and wait for the IP tool, it will come online again and the status will be inactive



You are now all done with the firmware upgrade, and can connect the camera directly to the NVR, it will take a few minutes and the NVR has detected the camera and configured it and you should see live pictures from it.