

SYSTEM X

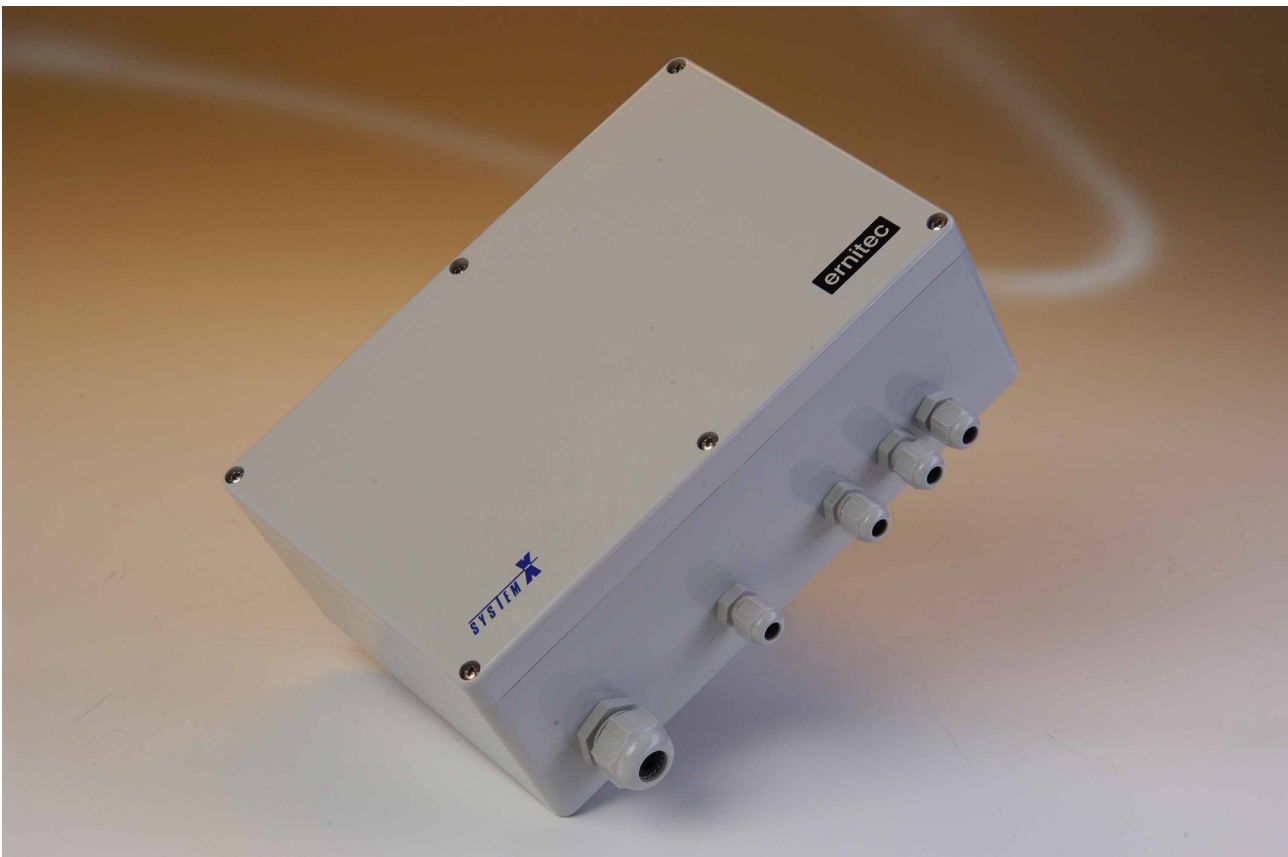
I151SX-DOME Multi-protocol Dome Interface

ernitec

The I151SX-DOME is a multi-protocol dome/PTZ interface providing protocol conversion between the LonWorks protocol and bespoke dome/PTZ protocols. The interface supports a wide range of dome/PTZ protocols.

The I151SX-DOME is capable of controlling up to 32 dome/PTZ cameras.

The I151SX-DOME is IP65 rated making it suitable for outdoor installations.



The I151SX-DOME comes in an IP65 waterproof box

Functions

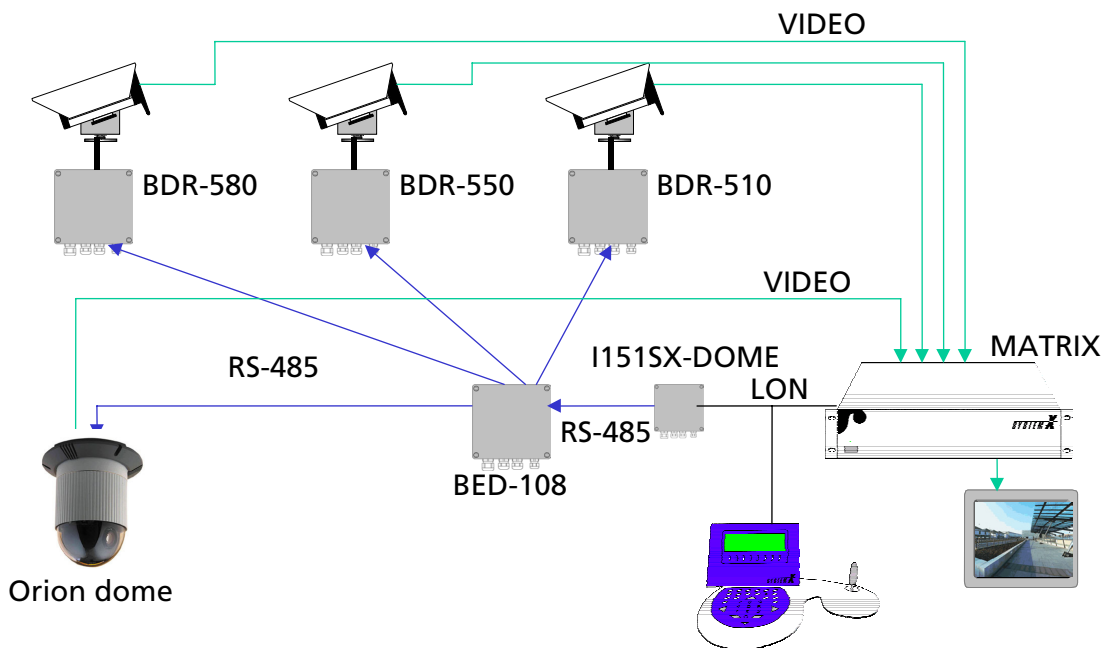
The I151SX-DOME provides an interface between the LONWORKS control network PTZ/Dome cameras. The I151SX-DOME offers as standard a number of different protocols, e.g. Ernitec, Panasonic and Pelco D, for the PTZ/Dome camera control. Please note that only one protocol can be chosen from the setup software even though all are included as standard, i.e. if two different protocols are required in an installation, two I151SX-DOMEs must be used.

The I151SX-DOME can be used either for new or existing installations. The I151SX-DOME provides an easy and cost-effective way of upgrading an existing matrix installation with e.g. an Ernitec 1000M to a System-X solution. Only the video matrix and the keyboard(s) need to be replaced as the I151SX-DOME provides the interface to the existing telemetry receivers and dome cameras. The same can be applied when upgrading matrixes from other manufacturers to System-X.

The I151SX-DOME has an RS-485 output with the PTZ protocol. The unit can control up to 32 telemetry receivers and/or dome cameras. The address of each unit is programmed from the NodeManager set-up software. Each I151SX-DOME can also receive up to 8 alarms for each camera. The I151SX-DOME can be programmed to make a camera go to a pre-defined preset when it receives an alarm.

Besides controlling Ernitec products with the ERNA protocol, it is also possible to control other third-party dome/PTZ cameras that use the Ernitec ERNA protocol. In some instances it is also possible to control third-party dome cameras as long as they use one of the available protocols. A list of supported third-party products is available from Ernitec.

The following drawing shows a typical use of the I151SX-DOME.



Block diagram showing a typical use of the I151SX-DOME

Specifications

Dome interface	
Interface	RS-485 uni-directional
Protocols	Ernitec ERNA, 2400 baud Dennard JVC Panasonic, 9600 baud Pelco D, 9600 baud
Supported Ernitec products	BDR-5xx Telemetry receivers Orion dome camera Astral mini P/T dome camera Saturn dome camera
Maximum number of telemetry receivers/domes	32
Maximum number of alarms per telemetry receiver/dome	8
Functions supported	Pan, tilt, zoom, focus, iris Call and save presets Access to setup menu Day/night switching (if available in camera)
Control interfaces	
Control interface	LonWorks 78 kbit/s, FTT-10A
Environmental Specifications, all products	
Power supply	115 / 230 VAC \pm 10%, 45 – 60 Hz
Power consumption	7 VA
Operating temperature	-10°C to +55°C
Humidity	95%
IP rating	65
Box material	ABS plastic
Dimensions (W x H x D, excl. cable glands)	242 x 160 x 90 mm
Weight	1.4 kg
EMC	EN 50081-1, EN 50130-4
Safety	EN 60950

LONWORKS, also known as LON, is a communication network. As opposed to TCP/IP (Ethernet), LONWORKS is designed for control applications such as building automation, transportation, home automation, security and other systems. For more information about LONWORKS, please refer to www.echelon.com.

LON and LONWORKS are trademarks of Echelon Corporation.



THE ONE TO WATCH

Denmark Head Office

Ernitec A/S
Hørkær 24
2730 Herlev
Denmark
Phone: +45 44 50 33 00
Fax: +45 44 50 33 33
ernitec@ernitec.dk
www.ernitec.com

French Branch Office

Ernitec France
N° 29 Parc Club du
Millenaire
1025 Rue Henri Becquerel
34036 Montpellier cedex 1
France
Phone: 04 67 15 10 15
Fax: 04 67 64 01 81
ernitec@ernitec.fr
www.ernitec.com

German Branch Office

Ernitec GmbH
Stormarnring 28
22145 Stapelfeld
Germany
Phone: 040 67 56 25 0
Fax: 040 67 56 25 25
ernitec@aol.com
www.ernitec.com

UK Branch Office

Ernitec UK
Gerrard House
Worthing Road
East Preston
West Sussex BN16 1AW
England
Phone: 01903 77 27 27
Fax: 01903 77 27 07
sally@ernitec.co.uk
www.ernitec.com

Middle East Office

Ernitec ME
Hamra - Makdesi Street
Younis Center - 5th floor
Office no. 503
P.O.Box: 113/5721
Beirut
Lebanon
Phone: +961 1 751 796
Fax: +961 1 751 795
Malek_kabrit@ernitecme.com
www.ernitecme.com