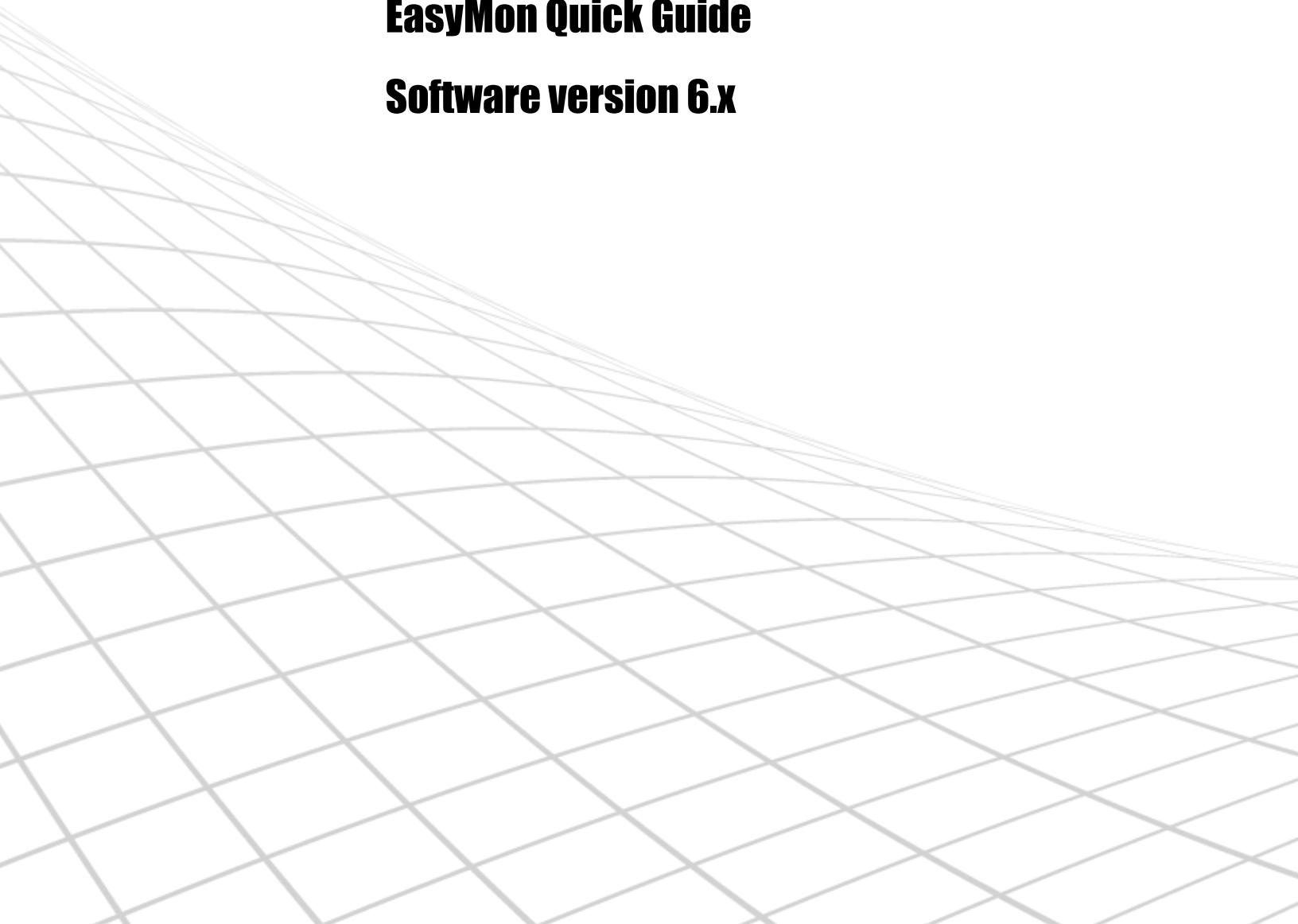


ernitec

Ernitec EVR software

EasyMon Quick Guide

Software version 6.x



Caution and Preventive Tips

Important Information

Before proceeding, please read and observe all instructions and warnings in this manual. Retain this manual with the original bill of sale for future reference and, if necessary, warranty service. When unpacking your unit, check for missing or damaged items. If any item is missing, or if damage is evident, **DO NOT INSTALL OR OPERATE THIS PRODUCT**. Contact your dealer for assistance.

- Handle with care, do not drop the unit
- Mount the unit in an equipment rack or place it on a solid, stable surface
- Indoor use only. Do not place the unit in a humid, dusty, oily, or smoky site
- Do not place it in an area with poor ventilation or in an area close to fire or other sources of heat. Doing so may damage the unit as well as cause fire or an electric shock
- When cleaning is necessary, shut down the system and unplug the unit from the outlet before uncovering the top cover. Do not use liquid cleaners or aerosol cleaners. Use only a damp cloth for cleaning
- Always shut down the system prior connecting or disconnecting accessories, with the exception of USB devices

Rack Mounting

Consult with the supplier or manufacturer of your equipment rack for the proper hardware and procedure of mounting this product in a safe fashion. Avoid uneven loading or mechanical instability when rack-mounting units. Make sure that units are installed to get enough airflow for safe operation. The maximum temperature for rack-mounted units is 40 °C. Check product label for power supply requirements to assure that no overloading of supply circuits or over current protection occurs. Mains grounding must be reliable and uncompromised by any connections.

Copyright

Under copyright laws, the contents of this user manual may not be copied, photocopied, translated, reproduced or reduced to any electronic medium or machine-readable format, in whole or in part, without prior written permission of the company.

Important Information

Before proceeding, please read and observe all instructions and warnings in this manual. Retain this manual with the original bill of sale for future reference and, if necessary, warranty service. When unpacking your unit, check for missing or damaged items. If any item is missing, or if damage is evident, **DO NOT INSTALL OR OPERATE THIS PRODUCT**. Contact your dealer for assistance.

The screens are formed on a PC with Windows 7.

If you are using another version of Windows, the screens have a slightly different appearance.

Regulation






	<p>This device complies with Part 15 of the FCC Rules. Operation is subject to the following two conditions: (1) this device may not cause harmful interference, and (2) this device must accept any interference received, including interference that may cause undesired operation.</p>
	<p>This symbol on the product or on its packaging indicates that this product shall not be treated as household waste in accordance with Directive 2002/96/EC. Instead it shall be handed over to the applicable collection point for the recycling of electrical and electronic equipment. By proper waste handling of this product you ensure that it has no negative consequences for the environment and human health, which could otherwise be caused if this product is thrown into the garbage bin. The recycling of materials will help to conserve natural resources.</p> <p>For more details information about recycling of this product, please contact your local city office, your household waste disposal service or the shop where you purchased the product.</p>
	<p>This symbol intends to alert the user to the presence of unprotected “Dangerous Voltage” within the product’s enclosure that may be strong enough to cause a risk of electric shock.</p>
	<p><i>This symbol intends to alert the user to the presence of important operating and maintenance (servicing) instructions in the literature accompanying the appliance.</i></p>
	<p>Compliance is evidenced by written declaration from our suppliers, assuring that any potential trace contamination levels of restricted substances are below the maximum level set by EU Directive 2002/95/EC, or are exempted due to their application.</p>

TABLE OF CONTENT

TABLE OF CONTENT	3
Introduction.....	4
Technical support.....	4
Starting EasyMon.....	4
EasyMon Basics.....	5
Viewing Camera Feeds.....	6
Viewing Playback Video.....	7
EXPORTING DATA	8
Layouts and Set	10
Managing layouts.....	11
EasyMon Advanced Tips.....	12
Virtual Cameras	14
VCA Visualization.....	15
Keyboard Shortcutsd.....	16
Windows	16
Dialogs.....	16
Show / hide components.....	16
Moving focus.....	17
Full screen window.....	17
Tabs.....	19
Profile window.....	19
Playback time and speed	20
Misc	21
Camera selection in a tab.....	21
Camera controls.....	21
Dome camera control.....	22
Copyrights.....	23

INTRODUCTION

EasyMon is an easy-to-use light weight application for viewing and exporting real-time and playback video. EasyMon can be used to create multi-screen solutions with multiple independently operating video tabs and windows.

EasyMon is meant as an alternative, lighter application that can be used to replace Workstation in situations in which only video viewing and exporting is required. EasyMon does not currently support alarms, audio, I/O, text channels, archives, or any additional functionality offered by Workstation.

TECHNICAL SUPPORT

For technical support, please contact the supplier of the system.

STARTING EASYMON

To log into EasyMon :

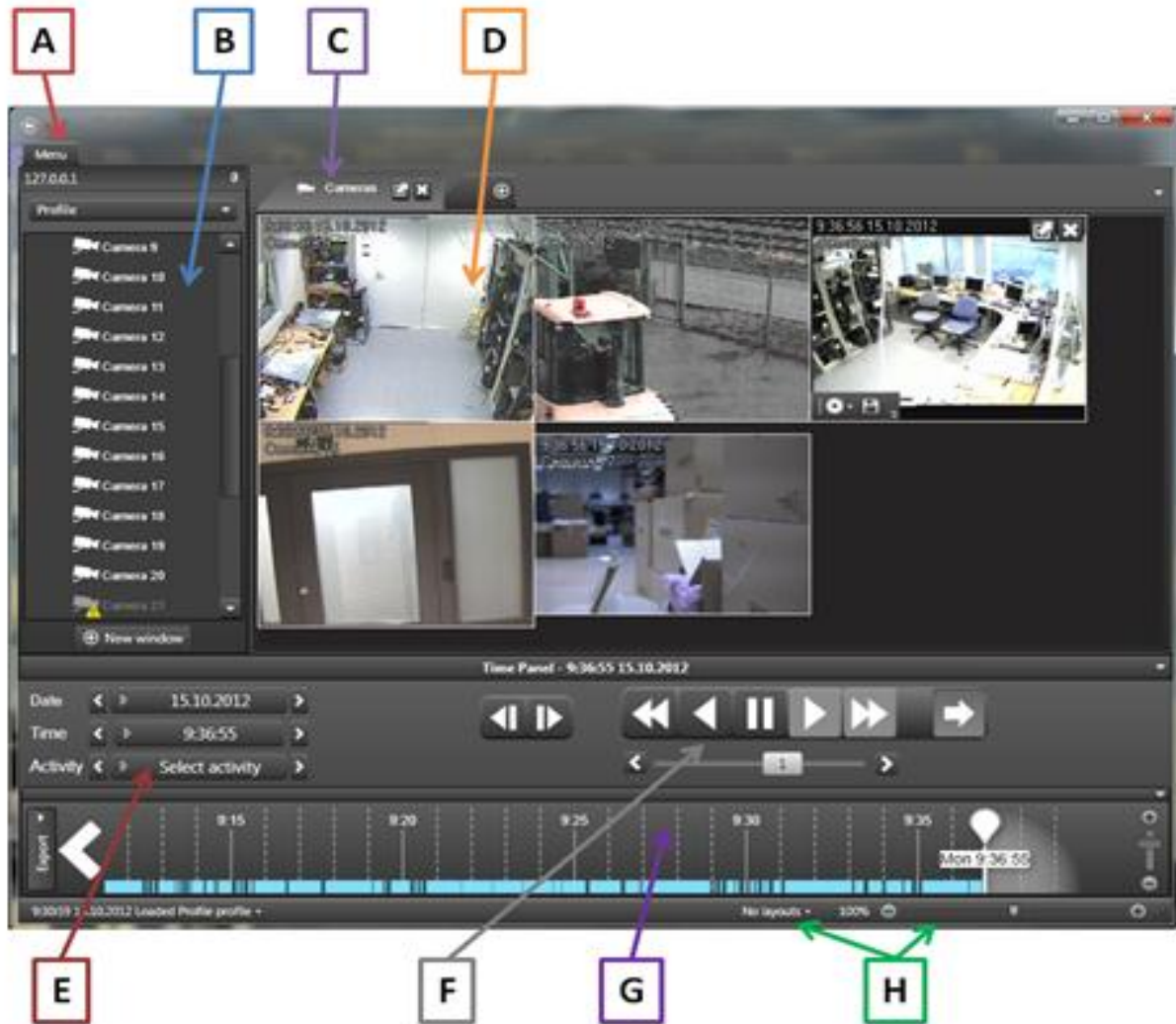
Open the EasyMon application through the Start menu.

The login screen is displayed. Select the master server, and type your user name and password in the corresponding boxes. Click **Login**.

You can add, remove, and edit master server addresses through the +, -, and 'Edit' buttons.

EASYPON BASICS

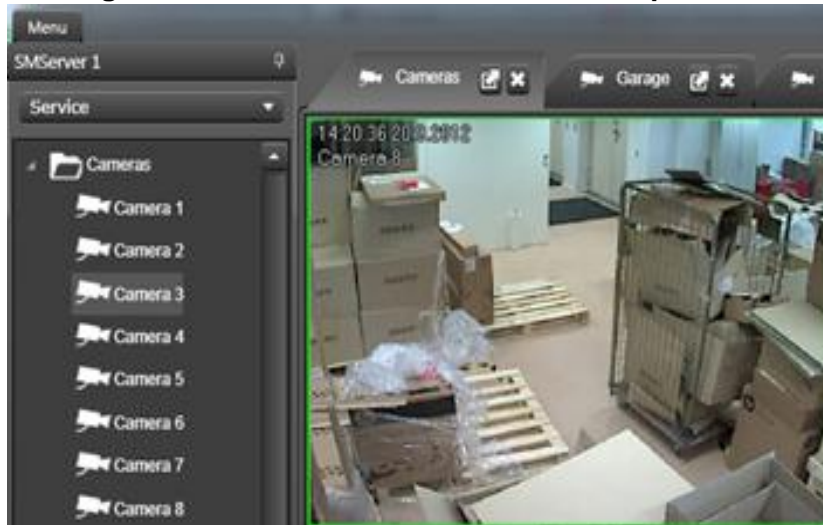
After logging in, EasyMon opens in real-time view mode:



- A) Profile Selection
- B) Device List
- C) Tabs
- D) Work Area
- E) Date & Time
- F) Playback Buttons
- G) Time Bar
- H) Layout Tools

VIEWING CAMERA FEEDS

Viewing real-time video feed from one or multiple cameras:



In the device list, double-click on the name of a camera or drag the camera to the work area.

You can have up to 16 cameras (depending on the license) open simultaneously. You can change the order of the opened cameras by dragging them on the work screen.

Note: Real-time video feeds have white borders, while playback video feeds have green borders.

Viewing a maximized video feed from one or multiple cameras:



If you want to maximize a camera feed from a single camera, double-click on the image feed from a single camera.

If you want to maximize a camera tab, click the 'Maximize' button next to the name of the tab.

You can return to default view by pressing 'ESC'.

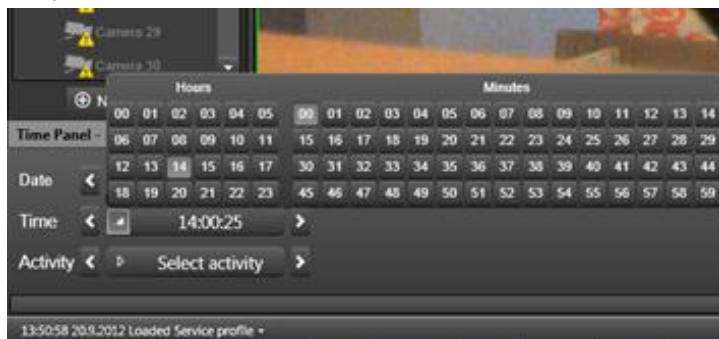
VIEWING PLAYBACK VIDEO



After opening cameras in real-time view as instructed above, you can enter playback mode via multiple ways as instructed below.

Note: Real-time video feeds have **white** borders, while playback video feeds have **green** borders.

Playback via calendar:



In the 'Time Panel', select the date and time by clicking the 'Date' and 'Time' tabs, or select a recent activity by clicking the 'Activity' tab.

Note: The 'Activity' tab contains only activities from the currently opened cameras.

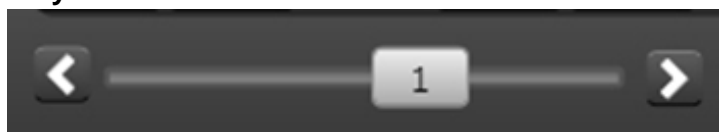
Playback via quick buttons:



Click the quick buttons to play, rewind, and fast forward through the material.

Note: You can always return to the current time by clicking the green play arrow.

Playback via time slider:



You can use the time slider to quickly slide through the material.

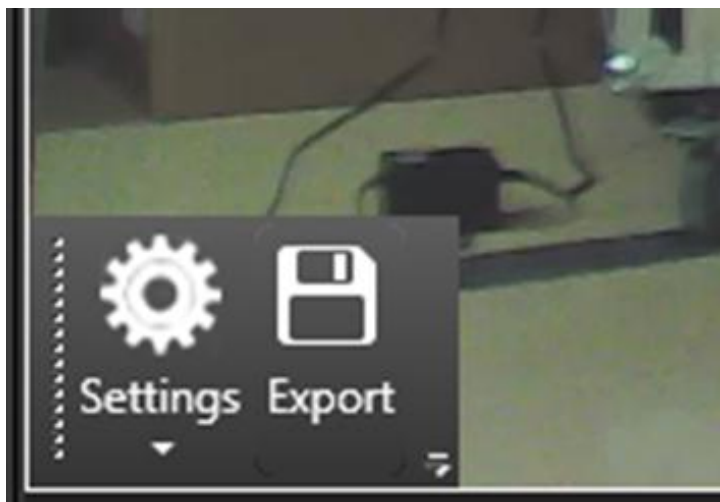
Playback via the Time Bar:



You can click on the bottom bar to open the 'Time Bar' slider, in which you can slide the marker to the desired playback point.

Note: You can use the mouse wheel on top of the 'Time Bar' to adjust the time scale displayed in the time bar. You can also use the 'Zoom' slider on the right side of the 'Time Bar' to adjust the scale.

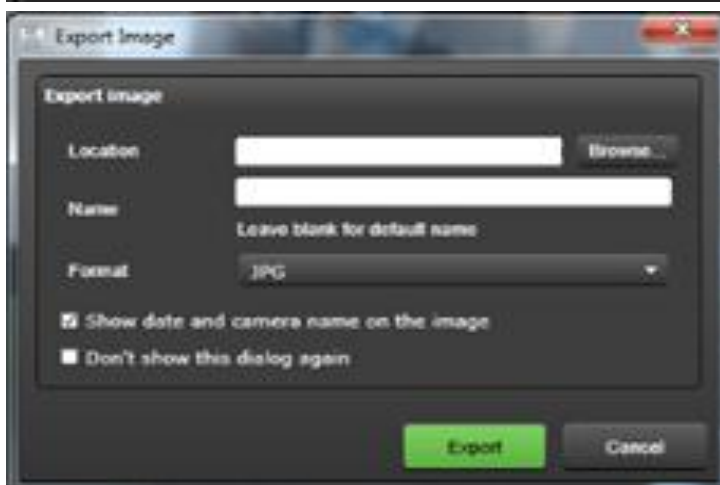
EXPORTING DATA



Exporting still images:

You can export still images from a specific camera by moving the mouse over a camera feed and clicking the 'Export' button on top of the video feed.

When the export dialogue opens, you can type the location and name of the file, select the desired file format, and select whether to show the date and camera name on the image.



Note: If the options dialogue has been disabled, you can change the options in image export settings as instructed below.



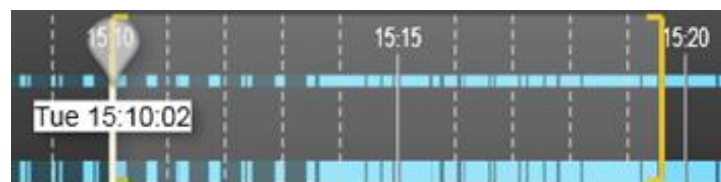
Exporting video clips:



You can export video clips from one or multiple cameras clicking the 'Export' button on the left of the 'Time Bar' at the bottom of the screen. If the 'Time Bar' is not visible, you can open it by clicking on the bottom bar at the bottom of the screen.



After clicking the 'Export' button, select the cameras from which data will be exported. Only cameras that have been opened in the work area can be selected.



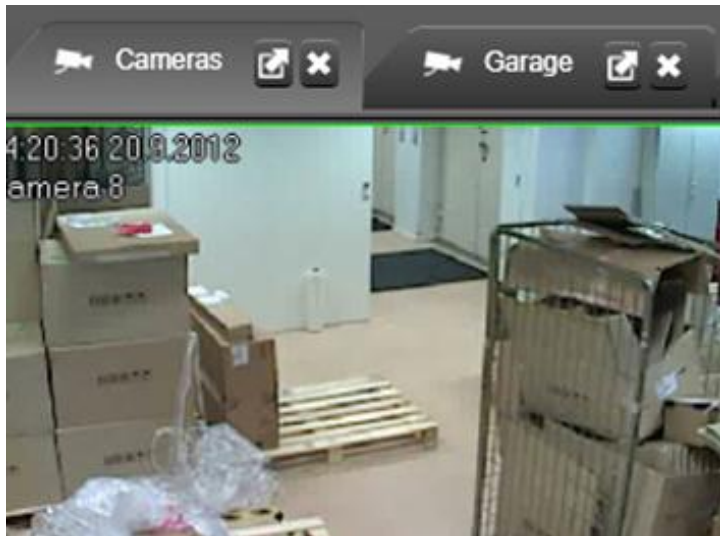
After selecting the cameras, choose the start and end points for the clip from the 'Time Bar'. You can center the bar to the start point or the end point by clicking the 'Start' or 'End' buttons, or center between the points by clicking the 'Duration' button.

After selecting the time period, click 'Start Export'. When the export dialogue opens, you can type the location and name of the file, and select the desired file format.

Note: If the options dialogue has been disabled, you can change the options in image export settings as instructed below.

LAYOUTS AND SET

Using tabs:

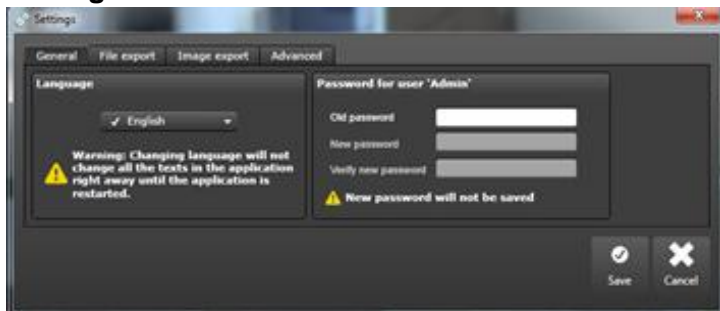


By default, cameras are opened to the 'Cameras' tab. You can have multiple camera tabs, each containing a different set of cameras.

To open a new tab, click the + button next to the tab list..

To rename a camera tab, right click on the name of the tab and select 'Rename current tab header'.

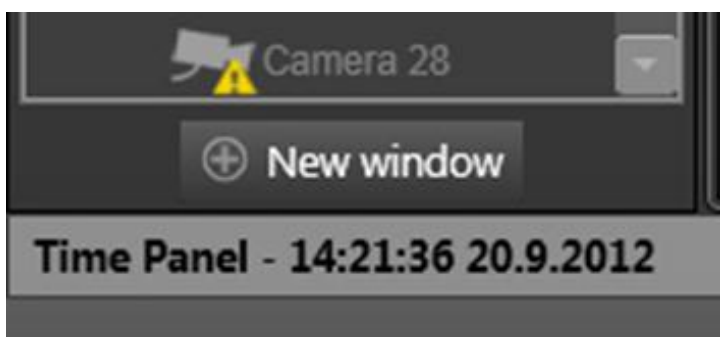
Settings:



You can open the settings window by clicking 'Menu' near the upper left corner of the application window.

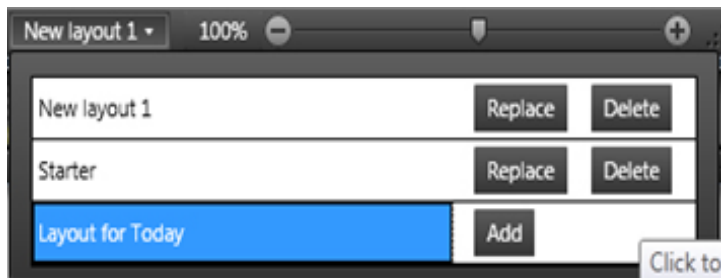
The 'Settings' window can be used to set the language, password, video and still image export default options, and advanced parameters.

Multiple windows:



You can open multiple simultaneous EasyMon windows by clicking the 'New Window' button under the device tree, or by dragging a camera or camera tab off from the EasyMon main window.

MANAGING LAYOUTS:



You can manage layouts by clicking the 'Layouts' button on the bottom right corner of the window.

Layouts contain all information about the current settings, including camera order, tabs, windows, and playback positions.

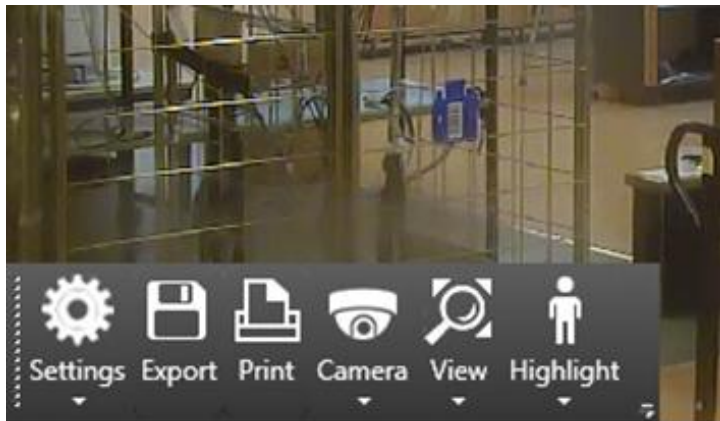
Note: You can scale the layout size by using the layout slider next to the 'Layouts' button.

EASYMON ADVANCED TIPS

ZOOM

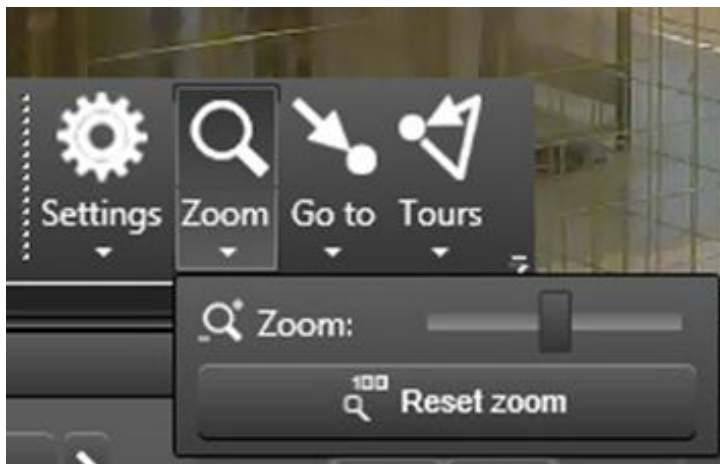
You can zoom in any camera image by holding the right mouse button and using the mouse scroll wheel. When you release the right button, the image resets to its original state.

DOME (PTZ) CONTROL

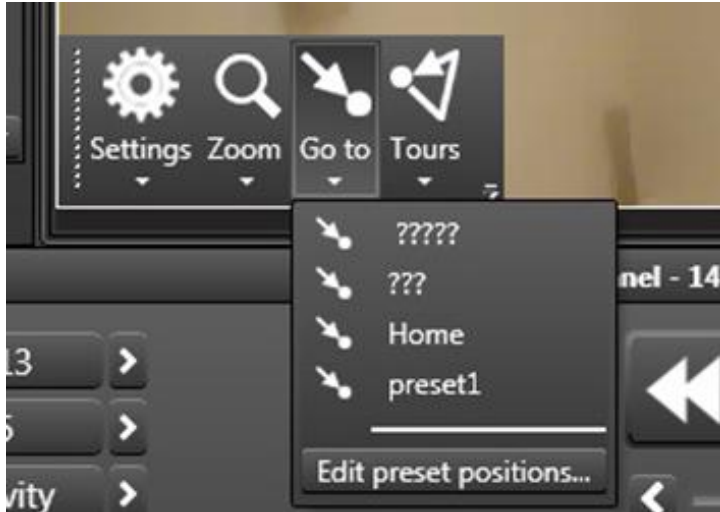


For dome (PTZ) cameras, you can open the dome controls by selecting the camera view and clicking 'Camera' on the toolbar.

You can control the camera by dragging with mouse or with arrow keys.

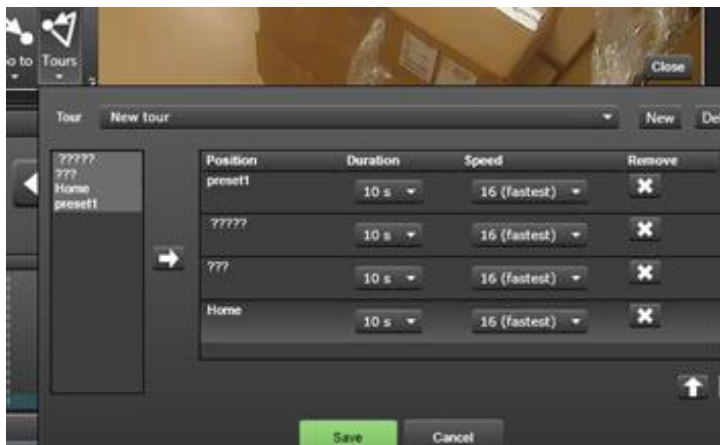


To zoom, open the dome controls for the camera and either use the mouse scroll button or click 'Zoom' and select the zoom distance.



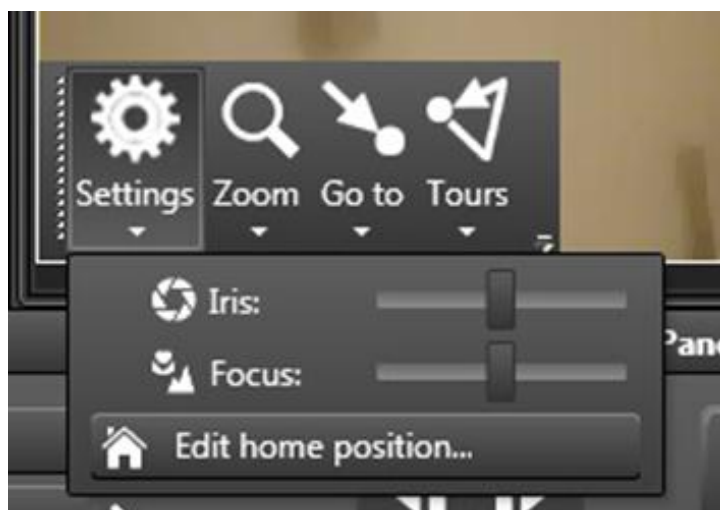
To view, edit, create, and delete preset positions, click 'Go to' and select the preset position you want to view, or 'Edit preset positions' to edit, delete, or create positions.

Note: You cannot create two preset positions for a single location. If you are unable to create a new position, EasyMon has determined a double position and you need to move the camera before creating a new position.



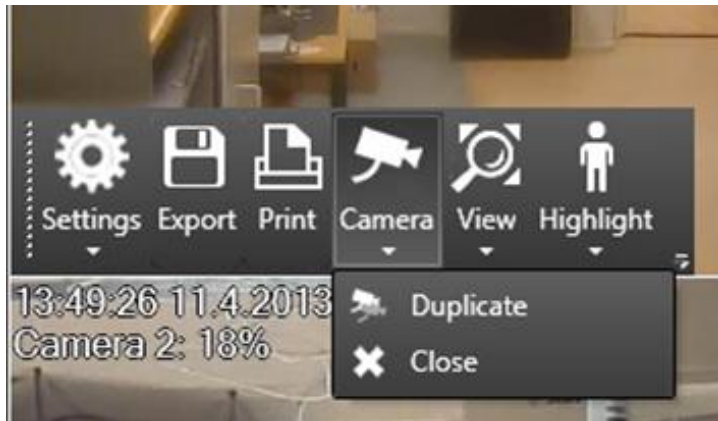
To view, edit, create, and delete tours, click 'Tours' and use the pull-down menu to select the tour you want to view or edit, or 'New' or 'Delete' to create or delete tours.

Note: Creating tours requires preset positions to have been set before they are added to the tours.

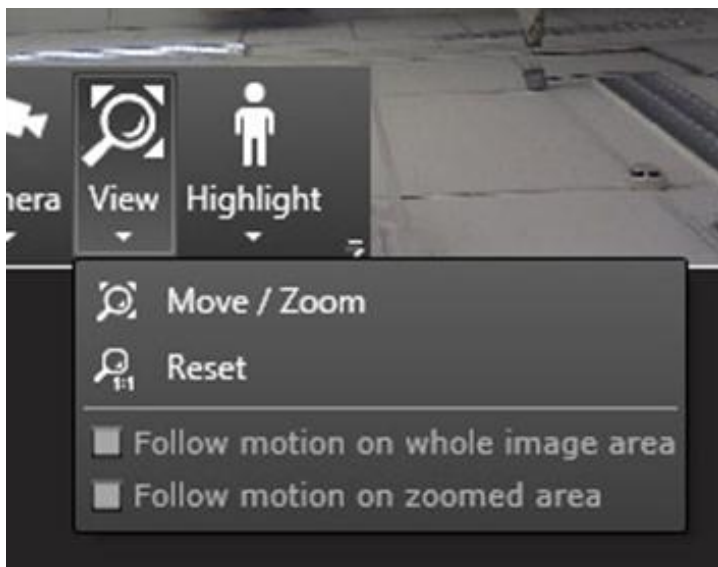


To set a PTZ camera's home position, click 'Settings' and 'Edit home position'.

VIRTUAL CAMERAS



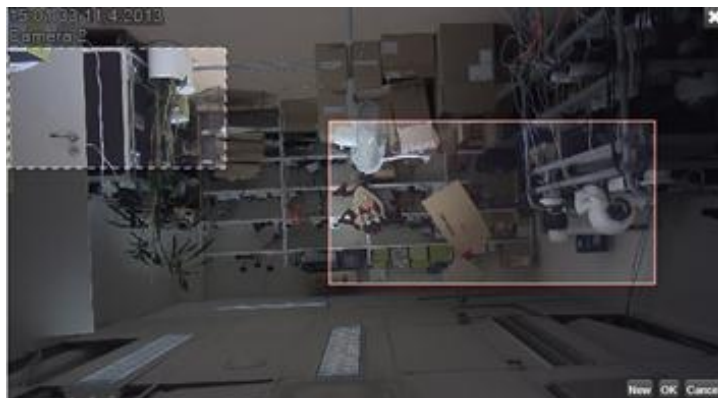
You can easily duplicate an existing camera view for a single camera and create a virtual camera view by selecting 'Camera' -> 'Duplicate'.



After duplicating a camera view, select 'View' -> 'Move / Zoom'.

Select the area you want the virtual camera view to encompass from the camera view, and click 'Ok'.

After the virtual camera has been created, you can move around the whole camera view by holding the right mouse button and using the mouse scroll wheel. When you release the right button, the image resets to its original state.

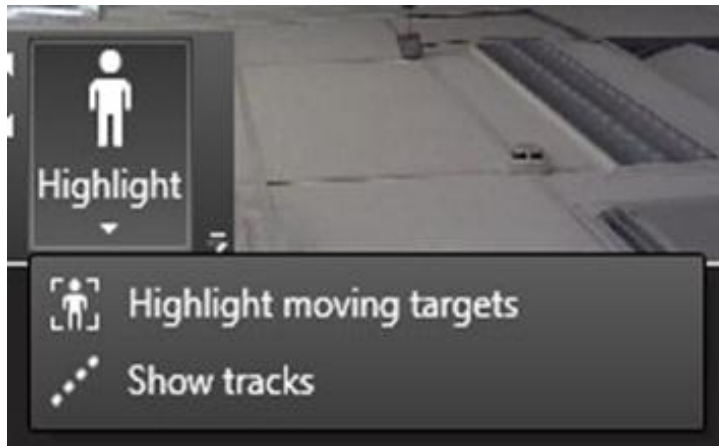


You can take multiple virtual views of a single camera by duplicating the camera and doing a new 'Move / Zoom' operation on the image.

Similarly, you can move selected virtual areas by clicking 'Move / Zoom' and dragging the selected virtual view.

Note: When zooming the virtual view, the default aspect ratio will be the same as in the original image. If you want to change the aspect ratio, hold 'Shift' while setting the virtual camera boundaries.

VCA VISUALIZATION



If VCA functionality has been enabled for the camera, you can activate VCA visualization from the 'Highlight' menu, by selecting either 'Show tracks' (displays movement routes) or 'Highlight moving targets' (draws a rectangle around each moving target).

You can re-click on the selection to disable the selected VCA visualizations on EasyMon .



If you have a compatible VCA license, you can set the motion detection to auto-zoom around moving objects. Auto-zoom will always attempt to simultaneously zoom on all moving objects within the visible image.

The auto-zoom function will follow the moving objects within the camera view depending on the setting:

On 'Follow motion on whole image area', movement will be followed and zoomed on in the whole image area of the camera (not only the virtual camera area),

On 'Follow motion on the zoomed area', movement will be followed and zoomed within the boundaries of the virtual camera image.

KEYBOARD SHORTCUTSD

WINDOWS

Shortcut	Description
Ctrl+N	New window
Alt+F4	Close current window

DIALOGS

Shortcut	Description
Enter	Same as clicking OK-button in a dialog. If focus is on other button when Enter key is pressed, then the other button's action is executed instead.
Esc	Same as clicking Cancel-button in a dialog (or closing the dialog).

SHOW / HIDE COMPONENTS

Shortcut	Description
F1	Show About window
F2	Reset layout: Set main window to normal state (not maximized). 100% zoom. Show profile window, time panel and time slider. Close export panel in time slider. Focus is not in any component.
Ctrl+F5	Show / hide ribbon (menu items)
Ctrl+F6	Show / hide profile window
Ctrl+F8	Show / hide time panel
Ctrl+F9	Show / hide alarm panel (in future, currently we don't have alarm panel)

When a component is displayed, focus is set to the first item in the component (same functionality as with the shortcut key without Ctrl).

MOVING FOCUS

Shortcut	Description
Tab	Move focus to next element within container component
Shift+Tab	Move focus to previous element within container component
F5	Move focus to first ribbon menu item. If ribbon is closed, open it first
F6	Move focus to first item in profile tree. If profile window is hidden, show it first
F7	Move focus to first camera in current tab
F8	Move focus to time panel. If time panel is collapsed, open it first
F9	Move focus to alarm panel (in future, we don't have alarm panel yet). If alarm panel is not visible, show it first

FULL SCREEN WINDOW

The following shortcuts work in full screen window.

Shortcut	Description
F2	Reset layout
F8	Move focus to time panel
Ctrl+F8	Show /hide time panel
Tab	Move focus to next control (next camera in tab)
Shift+Tab	Move focus to previous control (previous camera in tab)
Ctrl+P	Print video image
Ctrl+S	Save video image
Ctrl+Shift+D	Duplicate video view
Ctrl+Tab	Next tab as full screen content (can be implemented in the future)
Ctrl+Shift+Tab	Previous tab as full screen content (can be implemented in the future)

Esc	Restore from full screen to normal state
Ctrl+D	Date selection
Ctrl+G	Time selection
Ctrl+E	Activity selection
Ctrl+Right	Set playback time +30 seconds
Ctrl+Left	Set playback time -30 seconds
Ctrl+Shift+Right	Set playback time +5 minutes
Ctrl+Shift+Left	Set playback time -5 minutes
Ctrl+Alt+Shift+Left	Set playback time -1 hour
Ctrl+Alt+Shift+Right	Set playback time +1 hour
Ctrl+Shif+Y	Set playback time +1 day
Ctrl+Y	Set playback time -1 day
Ctrl+Enter	Set to current time
Ctrl+Space	Pause playback
Shift+Left	Decrease playback speed
Shift+Right	Increase playback speed
Ctrl+0...Ctrl+9	Camera selection
Ctrl+W	Close selected camera
Ctrl+Shift+W	Close tab. Restore from full screen to normal state. Show next tab.
Alt+Enter	Maximize selected camera

TABS

Shortcut	Description
Ctrl+Tab	Select next tab. If currently selected tab is last tab, select first tab in the window. Addition (+) tab is not selected.
Ctrl+Shift+Tab	Select previous tab. If currently selected tab is first tab, select last tab in the window. Addition (+) tab is not selected.
Ctrl+T	Create new camera tab. When new camera is created, move focus to first item in device tree (to make it easier to add new cameras).
Ctrl+Shift+T	Open tab menu
Ctrl+Shift+W	Close current tab
Alt+Shift+Enter	Maximize current tab to full screen size
Esc	Restore maximized tab to normal size (when no camera is selected)

PROFILE WINDOW

Shortcut	Description
Enter (when a camera is selected)	Add camera to tab
Enter (when a a folder is selected)	Add all cameras in the selected tab and Expand the folder
Left (when selected folder is expanded)	Close the folder
Left (when selected node is not expanded)	Select parent folder
Right (when selected folder is not expanded)	Open the folder
Up and Down	Move selection up or down. When a camera is active, the buttons for that camera are shown in the tab (that camera becomes selected)

PLAYBACK TIME AND SPEED

Shortcut	Description
Ctrl+D	Open date selection panel. Select date with arrow keys and accept selection with Enter. Both Enter and Esc closes date selection panel.
Ctrl+G	Open time selection panel. Select time with arrow keys and accept selection with Enter. When pressing a button, the panel stays open. Esc closes time selection panel.
Ctrl+Right	Set playback time +30 seconds
Ctrl+Left	Set playback time -30 seconds. If in realtime mode, switch to playback mode first, and set 1x speed.
Ctrl+Shift+Right	Set playback time +5 minutes
Ctrl+Shift+Left	Set playback time -5 minutes. If in realtime mode, switch to playback mode first, and set 1x speed.
Ctrl+Alt+Shift+Left	Set playback time -1 hour
Ctrl+Alt+Shift+Right	Set playback time +1 hour
Ctrl+Shif+Y	Set playback time +1 day
Ctrl+Y	Set playback time -1 day
Ctrl+Enter	Go to realtime mode. No action if already in realtime mode.
Ctrl+Space	Pause / play
Shift+Right	Increase playback/fast forward speed. No action in realtime mode.
Shift+Left	Decrease playback/fast forward speed (when speed = 0, start play back/fast rewind). If in realtime mode, switch to playback mode and start playback at 0.5x speed.
Ctrl+Alt+Right	Display next video frame in playback mode
Ctrl+Alt+Left	Display previous video frame in playback mode

MISC

Shortcut	Description
Ctrl+E	Open activity list. Use arrow keys + Enter to select activity. Esc closes activity list without selecting activity. Tab closes menu and sets focus to next element.
Ctrl+L	Open layout menu (layout name selection can be changed with arrow keys, Esc closes menu without selecting layout)
Ctrl+Up	Load previous layout (same order as in layout menu)
Ctrl+Down	Load next layout (same order as in layout menu)

CAMERA SELECTION IN A TAB

Shortcut	Description
Ctrl+1 to Ctrl+0	Set focus to n:th camera in tab (0=10th)
Tab	Next camera
Shift+Tab	Previous camera
Esc	Remove camera selection

CAMERA CONTROLS

Shortcut	Description
Ctrl+W	Close current camera
Alt+Enter	Maximize camera to tab.
Esc	Restore camera normal size (when maximized). When in normal size, remove focus.
Ctrl+P	Print camera image.
Ctrl+S	Save (export) camera image.
Ctrl+Shift+D	Duplicate video view

DOME CAMERA CONTROL

Shortcut	Description
Arrow buttons	Moving the camera left, right, up, down (also intermediate directions)
Page up	Zoom out
Page down	Zoom in
Home	Full unzoom
End	Maximum zoom in

COPYRIGHTS

© All rights reserved.

No part of this document may be reproduced for any purpose, even in part, without an explicit permission.

TRADEMARKS

Microsoft and Windows are either trademarks or registered trademarks of Microsoft Corporation in the United States and/or other countries.

Other product and company names may be the registered trademarks of their owners.

COPYRIGHT

Portions of this software are copyrighted by others, as follows:

DirectSkin OCX

WindowBlinds: DirectSkin™ OCX © Stardock®

log4net

Copyright © The Apache Software Foundation

MD5

Copyright © RSA Data Security, Inc. Created 1991. All rights reserved. License to copy and use this software is granted provided that it is identified as the "RSA Data Security, Inc. MD5 Message-Digest Algorithm" in all material mentioning or referencing this software or this function.

License is also granted to make and use derivative works provided that such works are identified as "derived from the RSA Data Security, Inc. MD5 Message-Digest Algorithm" in all material mentioning or referencing the derived work.

RSA Data Security, Inc. makes no representations concerning either the merchantability of this software or the suitability of this software for any particular purpose. It is provided "as is" without express or implied warranty of any kind.

These notices must be retained in any copies of any part of this documentation and/or software.

Windows Media Format Components

This product includes technology owned by Microsoft Corporation and under a license from Microsoft Licensing, GP. Use or distribution of such technology outside of this product is prohibited without a license from Microsoft Corporation and/or Microsoft Licensing, GP as applicable.

Xerces

This product includes software developed by the Apache Software Foundation (<http://www.apache.org/>). Copyright © 1999 The Apache Software Foundation. All rights reserved.