

The **ERNITEC EVR 7 SOFTWARE** has evolved over the years, based on actual customer needs within video surveillance. This has resulted in an intuitive and powerful solution, fulfilling all imaginable surveillance needs. The Ernitec EVR software solutions includes:

A true hybrid solution, with built-in support for both IP and analog cameras, provides seamless transition path from analog to network surveillance.

- Intuitive and easy to use applications for local or remote monitoring, searching, playback and export of video content for external analysis.
- Full-featured mobile and web clients provide network optimized access to surveillance footage whenever needed, independent of your location.



**EVR GO MOBILE APP**

# Ernitec EVR 7

---

## **ERNITEC EVR 7 NEW FEATURES**

### **EasyMon Multi Screen**

EVR6 has a limit of 16 way image split when view multiple video sources, with EVR7 this is increased to 36 images all displayed at the same time.

### **EasyMon Plugins**

It is now possible to enhance EasyMon with plugin tools for ANPR+, or Video Analytics.

### **EasyMon Maps**

It is now possible to enhance EasyMon with our Map plugin using geospatial map locators.

### **EasyMon Alarms**

It is now possible to view alarms in the EasyMon application further enhancing the usability of our Easy to use user interface.

### **EasyMon IO**

It is now possible to view alarms in the EasyMon application further enhancing the usability of this interface.

### **EasyMon Audio**

EasyMon now supports two way audio.

### **EasyMon Joystick Support**

Direct X joysticks are now supported using the EasyMon platform.

### **EasyMon Auto Cropping**

It is now possible to crop 4:3 format images to 16:9 when mixing and matching different video sources to improve the use for EasyMon split screens.

### **EasyMon Camera Tours**

You can now set and program PTZ camera tours in EasyMon.

### **Data channel increase**

The number of text data channels per recorder has been raised from 32 to 64.

### **Email authentication**

Watchdog alerts now support e-mail SMTP authentication, making it possible to send mail directly through any SMTP.

### **Bespoke video clip export**

It is now possible to add your own company image icon to exported images files for a more company bespoke service to your customers.

# Ernitec EVR 7

## ERNITEC BUILD SYSTEM

Ernitec provides a build your own design service where you can have your CCTV surveillance server built to order. From around 30 part numbers we can configure hundreds of different permutations from a simple 8 channel server right up to 64 channels with 64TB storage. When building your server, we install and configure the EVR software in both the servers and client workstations. The part numbers used for this system all have the prefix "Build".

### Ernitec EVR Client software

Ernitec Build-EVR software is the base software that is installed on any build EVR server. When combined with pro or enterprise software, this makes up the CCTV system. This part number can also be used as client software when combined with a Build Client part numbers.

Partno: Build-EVR



### Ernitec EVR PRO software

Ernitec EVR Pro is a single-server IP video recording software that runs on a standard Windows computer. It contains all of the functionality of any professional network video recording (NVR) solution, such as continuous 24/7 recording, real-time monitoring, playback, and intelligent motion detection.

The software is suitable for areas or buildings that can be covered with up to 50 cameras. Thanks to its rich set of features, it is an ideal entry-level package with advanced functionality and compelling cost of ownership.

1 server | 5 users | 50 channels per server

Partno: 0063-99997

Partno: Build-EVR-Pro-1

### Ernitec EVR ENTERPRISE software

Ernitec EVR Enterprise is a feature rich video surveillance solution that scales easily to suit the needs of businesses of all sizes. The system supports up to 6,400 analog and/or IP cameras in one centrally managed environment.

All cameras can be managed as a single system independent of the location. Ernitec EVR Enterprise can be extended with intelligent VCA and ANPR solutions, and due to its openness, it is easy to integrate with other systems. The user interface is available in 19 languages.

5 servers | 10 users | 64 channels per server

Partno: 0063-99999

Partno: Build-EVR-ENT-1

## EVR Upgrades & extensions

### PRO-ENTERPRISE UPGRADE

Software upgrade from EVR Pro to EVR Enterprise version for 1 channel. All server channels would need to be upgraded.

Partno: 0063-99996

### MASTER SERVER EXTENSION

Master server license for additional 20 servers and 20 users for EVR Enterprise. Active Directory integration.

Partno: 0063-99995

### SERVER EXTENSION

Master server extension license for additional 10 servers on top of 0063-99995 use this part number to increase in steps of 10.

Partno: 0063-99994

### USER EXTENSION

License for additional 10 users in VMS Pro and VMS Enterprise.

Partno: 0063-99993

### EVR-PRO VERSION UPGRADE

EVR-Pro version upgrade from Pro V5 or V6 up to Pro Version 7 One channel.

Partno: 0063-99953

### EVR ENTERPRISE UPGRADE

EVR-Enterprise version upgrade from Enterprise V5 or V6 up to Enterprise Version 7 One channel.

Partno: 0063-99985

## Video analytics software

Airports, bus and train stations, bars and clubs, car parks, retail stores and shopping malls, museums and tourist attractions, sports stadia and leisure facilities - just some

of the environments where video analytics can offer a cost effective, robust and highly accurate solution.



VCA COUNT software

VCA Count license for 1 camera. An addition to the VCA license, offering the upgrade to people counting engine in the VCA platform.

Partno: 0063-99989



ANPR+ software

Automatic number plate recognition for 4 channels, incl. Engine, Black- & White list management application.

Partno: 0063-99987



ANPR+ EXTRA LICENSE

One additional channel for ANPR+. Single channel extension to the base license for ANPR. Only used in with 0063-99987.

Partno: 0063-99986

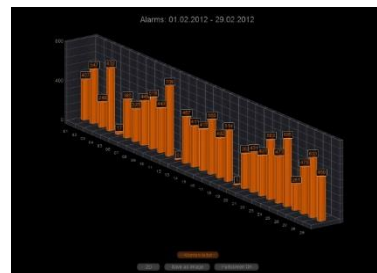


Video Content Analytics

VCA single channel license offering VCA to any analog or IP camera connected to the EVR VMS. Includes Trip wire, Direction filter, Removed object detection, Human & vehicle detection, Speed filter and Abandoned object functions. Unique easy to use 3D calibration, enter and exit filters.

VCA Surveillance Partno: 0063-99951

VCA Advanced Partno: 0063-99988



REPORTING TOOLS

Software data mining tool for system administrators and retail users to analyse data from the CCTV server (XMC). The tool can be used to obtain information from VCA, people counting and ANPR systems within the server providing more detailed feed back to the system user.

Partno: 0063-99990