

Ernitec EASYVIEW 7.5.25 Release Notes

January 2, 2018

Maintenance Release

Copyright © Ernitec Ltd 2018. All rights reserved.

This document contains supplemental information about the Ernitec EASYVIEW software, or information that became known after the product documents were completed.

For Ernitec Technical Support, go to: <https://support.Ernitec.com>

Important Notes

- **Ernitec EASYVIEW V7.5 is the Ernitec EASYVIEW release with both 32-bit and 64-bit installers. From the release of V7.5.25, Ernitec will also stop updating and creating new 32-bit drivers.**
 - New and updated 64-bit drivers will for as long as possible, still be compatible with 64-bit V7.* systems.
- The Workstation application is no longer included in V7.5.11, or later versions of Ernitec EASYVIEW! THE LAST EASYVIEW RELEASE THAT CONTAINS WORKSTATION IS V7.5.10.
- Ernitec EASYVIEW V7.3 and later releases require Microsoft SQL Express or SQL Server version 2014, when installing the system Master Server, or if the network EASYVIEW Servers use Ernitec VCA.
- The "Full Installer" will automatically install the SQL Server Express 2014, or upgrade an earlier SQL installation to 2014.
- The old "Evr Go Mobile App" does not support Apple iOS 11, or later versions, on Apple iPhone or iPad devices. Use the newer "EasyView", instead (requires Ernitec EASYVIEW V7, or later).

Changelog

V7.5.25

This list includes select changes and issues addressed in this release since V7.5.24:

- **EasyView**
 - Addressed issue with EasyView Player attempting to make unnecessary network connections.
 - Addressed issue with EasyView auto-hide in full-screen mode.
 - Addressed issue with EasyView where switching from live mode to playback, audio did not always stop. In some cases, live audio did not start after transition from playback to live mode.
 - Addressed issue with EasyView time panel mode setting not being saved/remembered over EasyView re-start.
 - Addressed issue with EasyView "Start new single playback failed" errors related to dragging time slider
 - Changed EasyView 4x and 8x speed playback handling to match 16x, 32x and 64x logic: If the required/asked for playback speed cannot be achieved (too long image decoding + drawing time on the client PC for the hardware) then EasyView asks the server to skip (not send) images.
- **DVRServer**
 - Addressed issue with DVRServer skipping images.
 - Addressed issue with Win32 FileTime error messages related to metadata handling.
 - Addressed issue with invalid data exception related to hermeneutic motion detection.
- **Gateway Service**
 - Updated memory handling in Gateway SDK (Software Development Kit) sample application TestSDKApplication.exe.
- **Miscellaneous**
 - Several drivers updated.
 - New functionality: EasyView Monitor Manager and the Ernitec AVM Operator Console has new support for EasyView Custom Roles (restricting, e.g., grid editing, etc.).

V7.5.24

This list includes select changes and issues addressed in this release since V7.5.18:

- **Installation:**
 - Addressed issue where SQL databases were not always created on new system.
- **DVRServer:**
 - I/O settings saving speedup
 - Memory management handling improvements and optimizations
 - Added digest authentication support for the HTTP I/O driver
 - Addressed issue for Digital I/O pulse output handling
 - Addressed issue of service freeze after deleting camera with CCRiA/CCFiA support
 - Addressed issue with network connection encryption
 - Addressed issue with connection establishing and closing

- Addressed issue with unnecessary log file messages regarding performance counters
- Addressed issue with AAC audio decoding
- Addressed issue with server failover not working
- Addressed issue with playback position jumping
- Addressed issue with Schedule I/O exception
- **EasyView:**
 - Enabled text channel exporting for SEF (Ernitec Secure Export Format)
 - Removed username/author metadata from ASF clip export
 - Addressed issue with EasyView settings saving crash
 - Addressed issue with TruCast use in Windows domain environment
 - Addressed issue where sharing bookmarks required exporting rights
 - Addressed issue where EasyView plugin instance creation caused EasyView to crash
 - Addressed issue with H.264 decoder unloading
 - Addressed issue with EasyView keyboard shortcuts unhandled exception
 - Addressed issue with Bosch camera de-warping tilt range
- **System Management:**
 - Addressed issue with Loopback I/O "Default state is closed" checkbox
 - Addressed issue with VCA Configurator not always exiting/closing
 - Addressed issue with IP Camera Finder saving results
 - Addressed issue with change in motion recording scheduling when upgrading
 - Addressed issue with audit trail database indexing
- **Gateway Service:**
 - Image handling optimization (lower CPU and memory consumption)
 - Addressed issue with failed login username or password message (now no longer reveals which one was incorrect)
 - Addressed issue where connection cannot be re-established from application without Gateway service restart
- **Miscellaneous driver updates and other changes.**

Upgrading

The Ernitec EASYVIEW software requires a license key on installation. Please, see the Ernitec EASYVIEW Installation Guide for information on updating the license key. Different major version licenses are not compatible. A system with an EASYVIEW Version 6 installation and license can be upgraded to Version 7, but the license needs to be updated as well to Version 7 license. Version 5 servers cannot be by default added into a system with a V7 Master Server.

When upgrading, it is a good idea to be careful and make a system backup before starting the upgrade process. This way, it is easy to fall back to previous version, if there are any serious issues. It is usually not required to upgrade client applications separately. The client PCs will download the latest version automatically from the Master Server.

Supported Operating Systems

- Windows 7, 8, 8.1 and 10 for clients.
- Windows Server 2008, 2008 R2, 2012 and 2016.
- Windows XP is not supported since Ernitec EASYVIEW Version 6.2.1.

NOTES:

- When using analog capture/compression cards, use Windows 7 and the 32-bit (x86) EASYVIEW version.
- When using Windows Server versions, enable "Desktop Experience" and "Media Foundation" Windows-features in the Windows Control Panel.

New in Version 7.5.25 compared to 7.5.24

- EasyView Monitor Manager and the Ernitec AVM Operator Console has new support for EasyView Custom Roles (restricting, e.g., grid editing, etc.).

New in Version 7.5.23 compared to 7.5.18

- Added support for digest authentication in a number of device drivers.
- Optimized memory usage and allocation for improved system performance.
- Optimized Gateway image processing performance.

New in Version 7.5.18 compared to 7.5.15

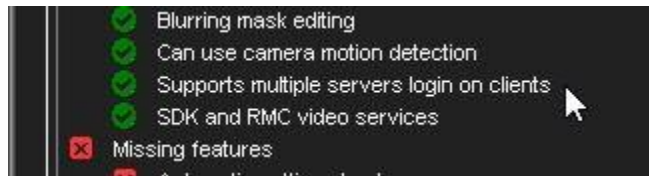
- System Manager has now in the server diagnostics section a camera load/overload indicator. This can and should be used in any system configuration change to detect whether the system is capable of fully storing and sending all camera material. The indicator should be used in all typical different load times of the system (i.e., daytime, night time etc..)

New in Version 7.5.15 compared to 7.5.13

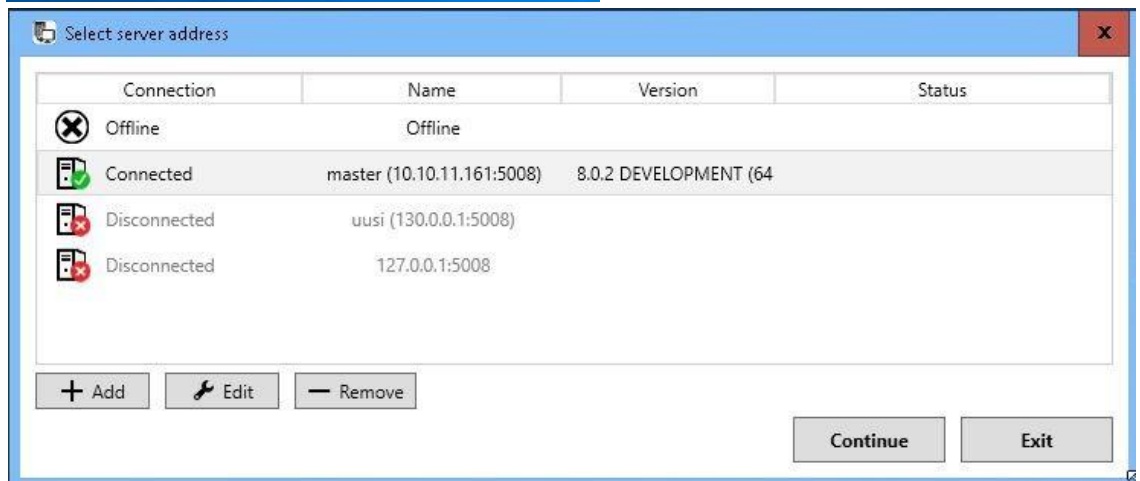
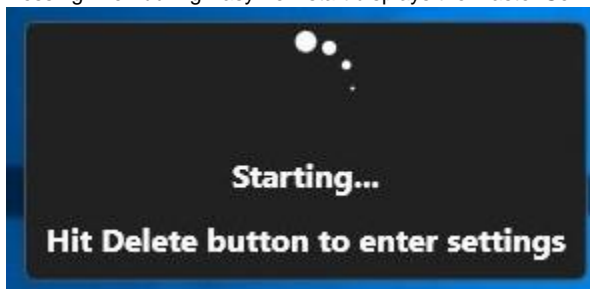
- Video stream opening/closing performance enhancements.
- It is possible to have application login screens to show the site (Master Server) selection menu. This can be activated from System Manager general settings.
- Improved data encryption between system components - all client-to-server and server-to-server communications compressed and encrypted with connection-specific keys (256 bit AES) on top of existing sensitive data encryption (256 bit AES).

New in Version 7.5.13 compared to 7.5.12

- Clients support now logging in to multiple different 32- and 64-bit servers
 - Users do not have to uninstall EASYVIEW to use 32-bit and 64-bit servers
- anymore EasyView Multimaster - EasyView can connect to multiple Master Servers simultaneously
 - Using of this feature requires:
 - Client reinstall (uninstall previous EASYVIEW or EasyView and reinstall with newer installer)
 - Master Server license to be updated with multi-master feature
 - User can connect to a single Master Server without updating the license. But trying to start a second EasyView instance to run concurrently to the first one, requires the new Master Server to have the license value activated.



- One EasyView window (instance) is connected to one Master Server. The second EasyView window can be connected to another Master Server.
- Layouts and settings will be managed per server, so activating layouts for one server only updates the EasyView windows that were logged in to that server.
- Pressing "Del" during EasyView start displays the Master Server selection screen



- The client application updater, VAU, can also be used with command line parameters:
 - "-c EasyView.xml -a 192.168.100.22 -p 5108" will start EasyView forcing it to logon to server 192.168.100.22:5108

New in Version 7.5 Compared to 7.4

- OpenCV based de-warping support: 360-degree cameras that do not have native (camera manufacturer) de-warping support, are automatically de-warped with the OpenCV de-warping algorithm.
- New smooth video scaling algorithm option:
 - The default video scaling (video zoom or cropping) is still "best performance", but from EasyView settings - Advanced - there is a new option to enable "Smooth video scaling" which will make zoomed and cropped video images appear better looking.
 - Use of this option increases the client CPU load slightly, and in client systems which are on their "drawing performance limit", use of this setting could lead to breaks in video playback.
- The OnCam Grandeye de-warping SDK is updated to version 1.16.10.16. Also wall panorama mode is supported now.
- The Bosch driver can be forced to use JPEG.
- Mobotix MxPEG encoding support.
- New native driver for Dahua cameras.
- New MSI installers for EasyView (from V7.5.10, see separate MSI package note with the MSI installers). "Full" and "Limited" installers.
- Installer logs are automatically copied to the installation directory for easier troubleshooting.
- User role import/export for easier configuration of customized roles.
- Alarm scheduler changes:
 - Active alarms will stop automatically, if calendar changes to off.
 - Alarms will automatically activate, if calendar changes to on and the trigger was active.
- Scheduled I/Os:
 - Possible to set input to activate or deactivate with timer.
 - Needs recording EASYVIEW Server upgraded to the latest version. Enables, for example, lighting control with EASYVIEW output/alarm.
- Logical I/Os:
 - Available for Ernitec Enterprise Version.
 - AND and OR operations are possible.
 - Signal from up to 32 outputs can control AND, OR, HOLD AND and PULSE AND input signals.
- Countdown I/Os:
 - Available for Ernitec Enterprise Version.
 - Input can activate:
 - If a trigger is held active longer than the preset duration.
 - If a regular pulse type trigger is not detected for a preset duration.

- PTZ camera tour presets have the possibility to add a longer stop time in PTZ tours (up to 60 minutes).
- UDD serial model data bit 7 support added.
- Camera motion data is not on by default. This reduces system networking load. The setting can be activated from System Manager.
- DVR storage file count can be adjusted in the Installer.
- Gateway now has enhanced error logging capability via configuration file.
- MaxSmooth playback (not on by default): Both live and playback video appears smoother than before.
 - Only recommended when there are 1 monitor in use. May have issues with lots of cameras and three or more monitors.
 - Docking certain user interface components (device tree, alarm list, etc.) will not work when MaxSmooth option is selected. User can make such adjustments with MaxSmooth off, then activate it.
 - "Auto hide" mode of alarm list and device tree don't work properly with MaxSmooth.
- Storyboard:
 - Storyboard creation/editing with Ernitec Enterprise version.
 - Storyboard changes also include considerable changes to export mode time slider.
- Profile Maps plugin can react to alarms by switching view.
- Custom user-created camera grids.
- Camera grid cells can contain plugins.
- User lock and login can trigger loading of a default layout.
- Zero-bezel camera grids.
- EasyView Monitor Manager plugin for local monitor content management (for Ernitec EASYVIEW Enterprise version).
- EasyViewPlayer integral to EasyView and exported to target export directory.
- Alarm search max result count raised to 5000.
- Fast bookmarking with keyboard shortcut.
- Stretch option for tab images (only for fixed grids).
- Diagnostics plugin for displaying EASYVIEW server connection status. Export quality settings adjustable from EasyView settings.
- AVM thumbnail update adjustable from EasyView settings.
- 360 de-warp and image controls settings are automatically memorized when used from device tree.
- 360 de-warp and virtual camera (zoom) settings are included in the exported video clips.
- Direct control of 360 camera de-warp settings from on top of the camera.
- Custom alarm highlight color.
- EasyView full-screen will not drop out from mouse movement:
 - Dropping out from full-screen can be achieved with the Esc key, the F11 key and by taking mouse cursor to the top of the screen and then using the window normalize control.
- Startup animation refreshed.
- Camera Carousel plugin:
 - Allows to define a "Camera tour" in a normal EasyView camera grid.
 - Always in real-time/live mode, so using playback controls works normally for other cameras in grid, but Camera carousel cameras stay in real-time.
 - Offers autocrop, stretch and virtual camera adjustments in edit mode.
- All search plugins (Motion, Thumbnail, Textdata, Alarm) have an additional icon so that they are more clearly separated from each other for usability.
- Motion search plugin improvements:
 - Motion search has a playback camera view and shows the time slider.
 - Searching for motion displays thumbnails (thumbnail size is adjustable).
 - Size of camera can be adjusted.
 - Selecting a motion search result will take the playback time to the selected time.
 - It is possible to review all motion search results by pressing play.
 - Playback will jump through all the results, displaying all motion in the selected area and nothing else.
- Thumbnail Search Plugin:
 - Thumbnail search is meant for scenarios where visually some change (for example, the disappearance of an object) can be seen in video material.
 - Thumbnail search is used by selecting appropriate time period (start and stop times) and starting the search. This will generate selected number of thumbnails.
 - User can then "dig in" to the events by double-clicking a thumbnail. This will further perform another thumbnail retrieve and again display selected amount of thumbnails from the selected time period.
 - By "digging in" or "diving into" the material this way, it is fast to find the time when object has disappeared. The playback controls can then be used to review the events leading to the disappearance.
- Ultra fast exporting.
- In addition to previous export formats, the new SEF (Secure Export Format) has been added.
- SEF format exporting is 15-20 times faster than ASF exporting.
- SEF format is fully authenticity checked, and can be viewed with the EasyViewPlayer executable, or the normal EasyView client.
- EasyViewPlayer will open clips when drag and dropped on top of the icon.
- Tab content save/load:
 - It is possible to save, share and manage tab content settings.
 - This allows to configure, for example, a camera grid with certain specific plugins (for example, Camera Carousel with specific cameras or Web Browser pointing to specific website) and then share and save it,
 - Saved tabs can then be opened faster with keyboard shortcuts or in the AVM Operator Console. It is like a mini-layout.

notice.

Any products, services, or features discussed in this document are subject to change by Ernitec Ltd. or a third party when applicable.

Ernitec Ltd does not guarantee the availability of all products, services, or features.

For Ernitec Technical Support, go to: <https://support.ernitec.com>