

Backup Wizard User's Manual V1.5.01

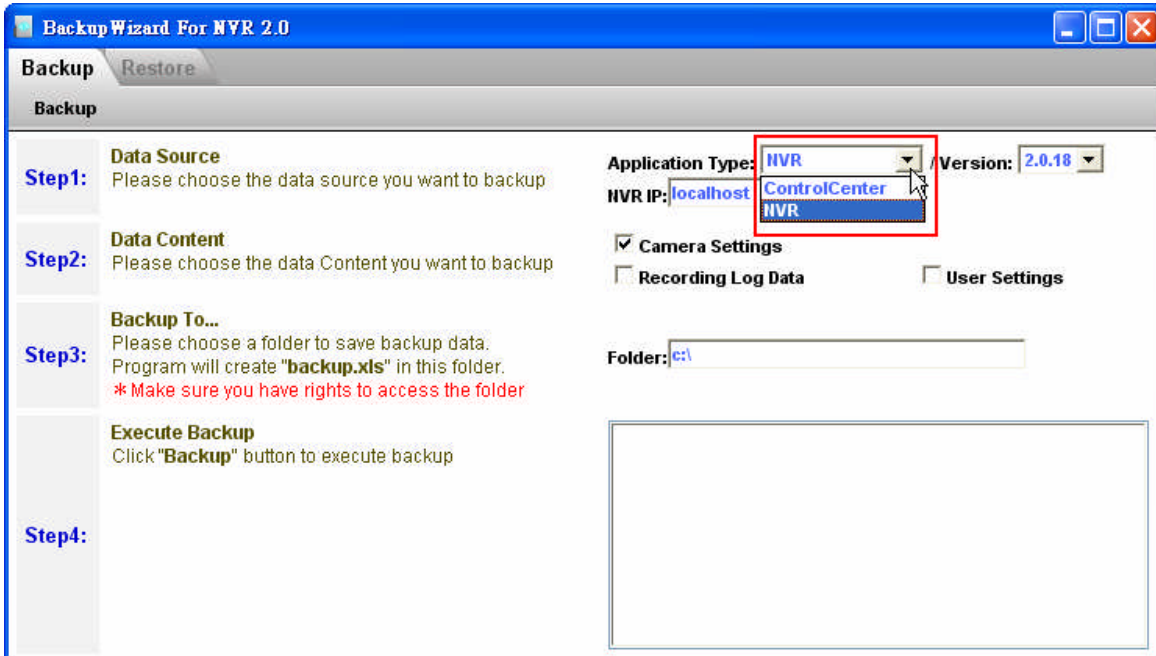
Table of Contents

BACKUP FROM DATABASE.....	2
Step 1: Select the Data Source	2
Step 2: Choose the data Content you want to backup:.....	4
Step 3: Type a path to backup file:.....	4
Step 4: Click Backup Button to backup file:.....	5
Step 5: Backup Successfully:.....	6
RESTORE TO DATABASE	7
Step 1: Click label to switch to restore function	7
Step 2: Choose the data Source you want to restore:	7
Step 3: Choose the data Content you want to restore:.....	8
Step 4: Choose Restore to target:	9
Step 5: Start Restore:.....	9
Step 6: Restore successfully:.....	10

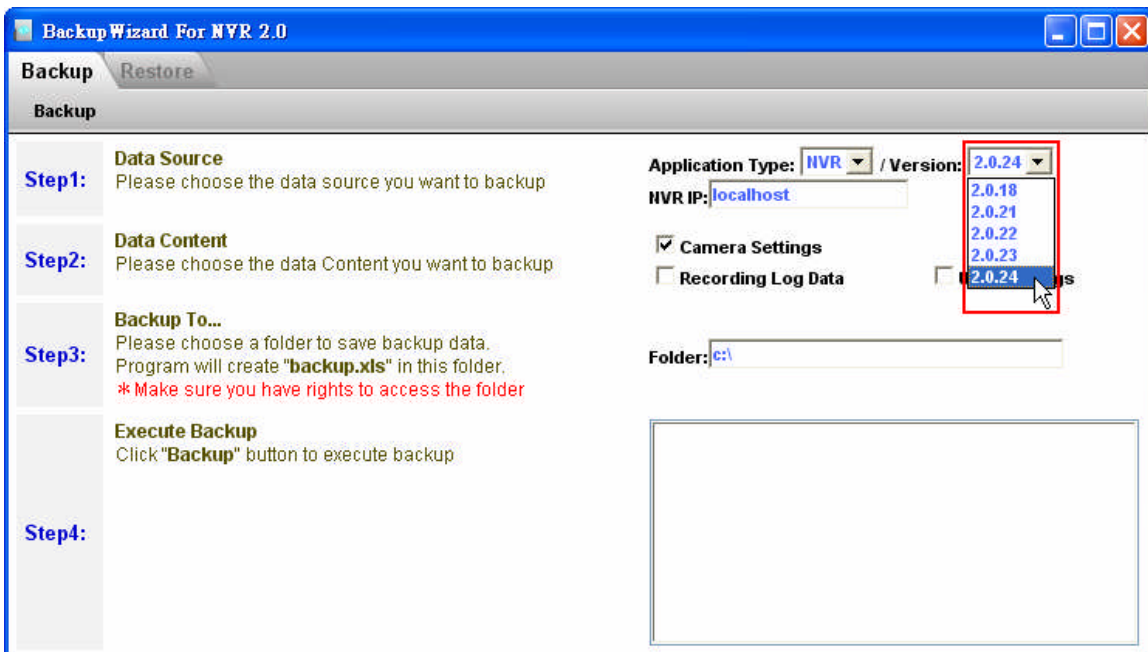
Backup from Database

Step 1: Select the Data Source

1. Select application that you want to backup.



2. Select version that you want to backup.



3. Type Database Server IP Address.

Backup Wizard For NVR 2.0

Backup | Restore

Backup

Step1: **Data Source**
Please choose the data source you want to backup

Step2: **Data Content**
Please choose the data Content you want to backup

Step3: **Backup To...**
Please choose a folder to save backup data.
Program will create "**backup.xls**" in this folder.
** Make sure you have rights to access the folder*

Step4: **Execute Backup**
Click "**Backup**" button to execute backup

Application Type: **NVR** / Version: **2.0.21**

NVR IP: **172.16.1.204**

Camera Settings
 Recording Log Data **User Settings**

Folder: **c:**

Step 2: Choose the data Content you want to backup:

1. Click checkbox to select content :

The screenshot shows the 'Backup Wizard For NVR 2.0' window. The 'Backup' tab is active. The interface is divided into four steps on the left and configuration options on the right. Step 2, 'Data Content', is highlighted. The right side shows 'Application Type: HVR' and 'Version: 2.0.21'. The 'NVR IP' is '172.16.1.204'. Three checkboxes are visible: 'Camera Settings' (checked), 'Recording Log Data' (checked), and 'User Settings' (checked). A red box highlights these three checkboxes. Below them is a 'Folder:' field with 'c:\' entered. The 'Execute Backup' section at the bottom has a large empty box.

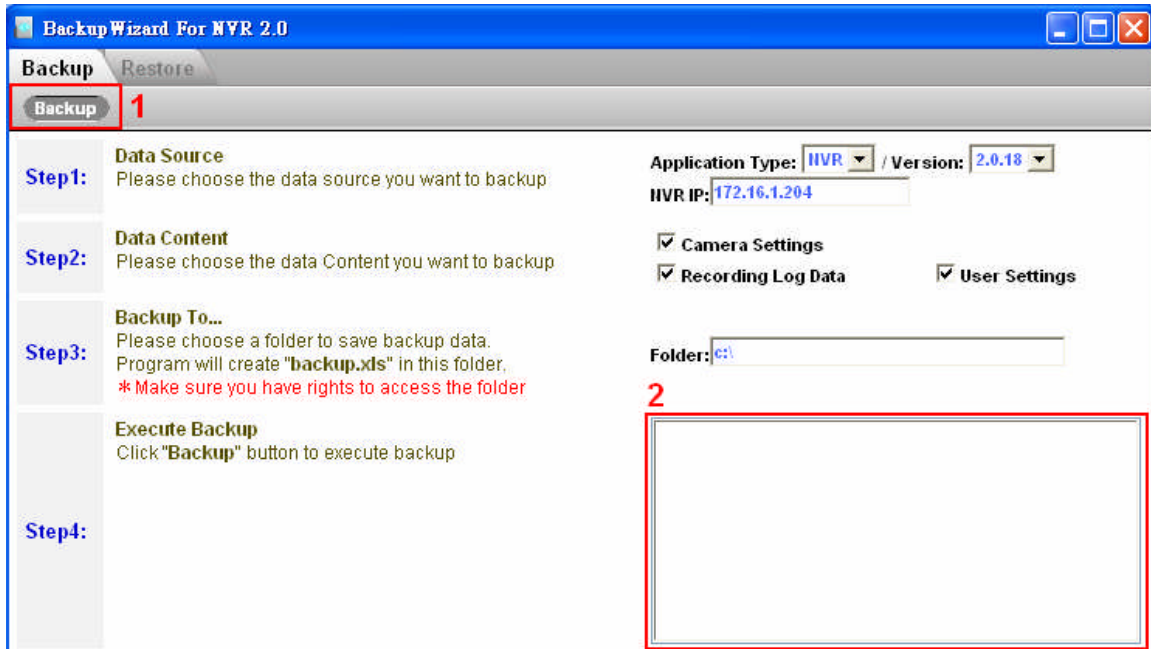
Step 3: Type a path to backup file:

1. Click checkbox to select content :

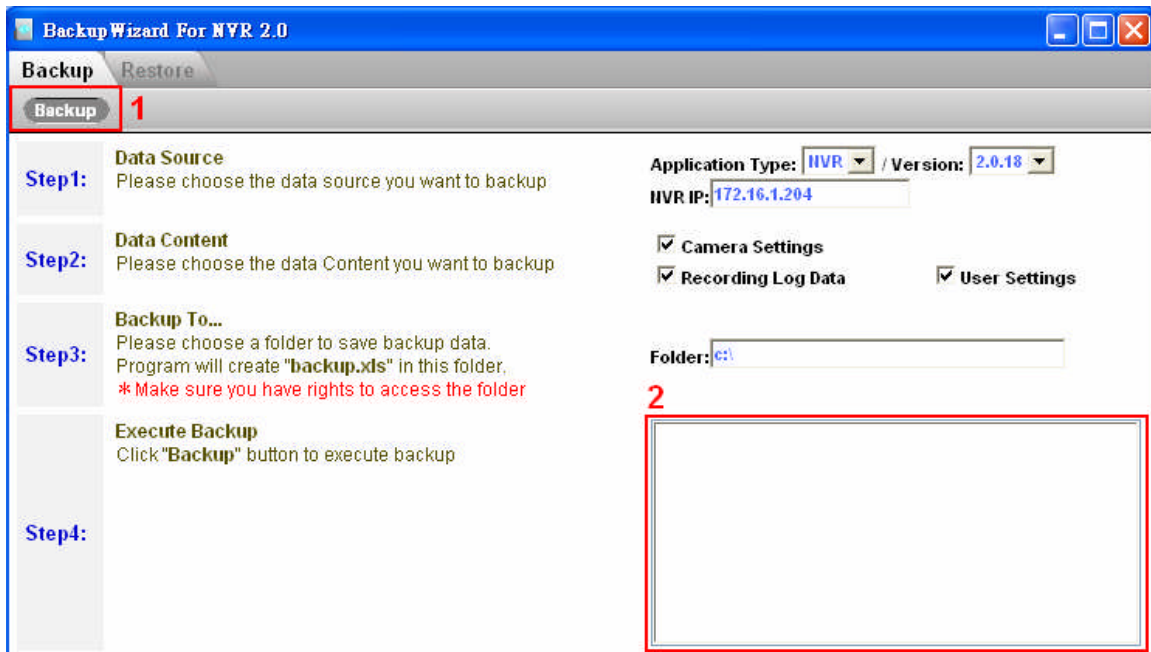
The screenshot shows the 'Backup Wizard For NVR 2.0' window. The 'Backup' tab is active. The interface is divided into four steps on the left and configuration options on the right. Step 3, 'Backup To...', is highlighted. The right side shows 'Application Type: HVR' and 'Version: 2.0.18'. The 'NVR IP' is '172.16.1.204'. Three checkboxes are visible: 'Camera Settings' (checked), 'Recording Log Data' (checked), and 'User Settings' (checked). A red box highlights the 'Folder:' field, which contains 'c:\'. The 'Execute Backup' section at the bottom has a large empty box.

Step 4: Click Backup Button to backup file:

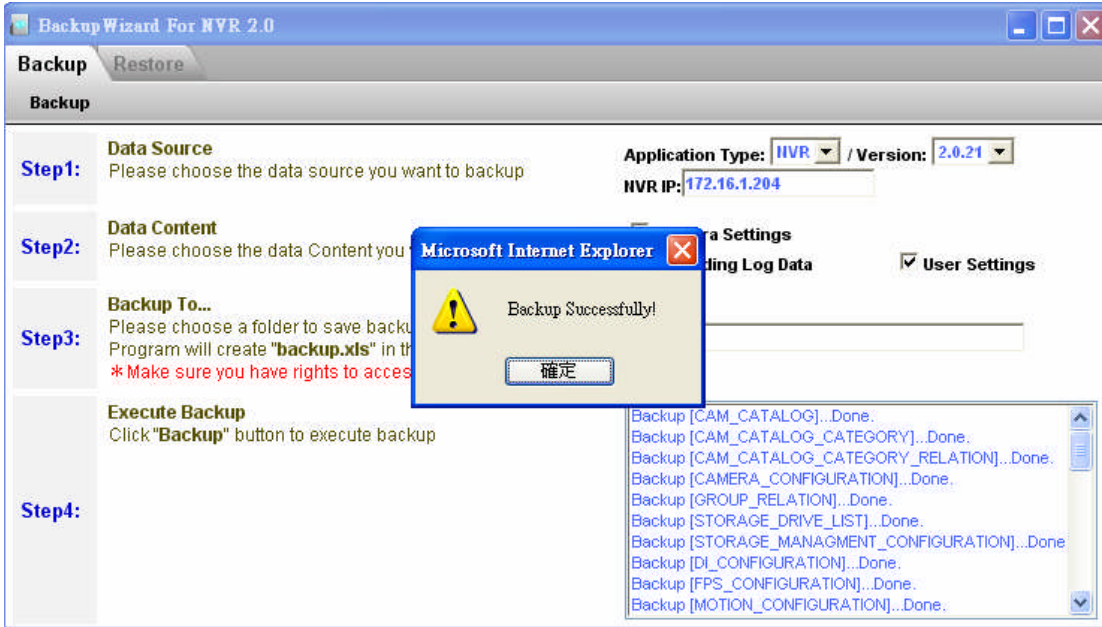
1. Click Backup Button To Start Backup :



2. List will show current status :

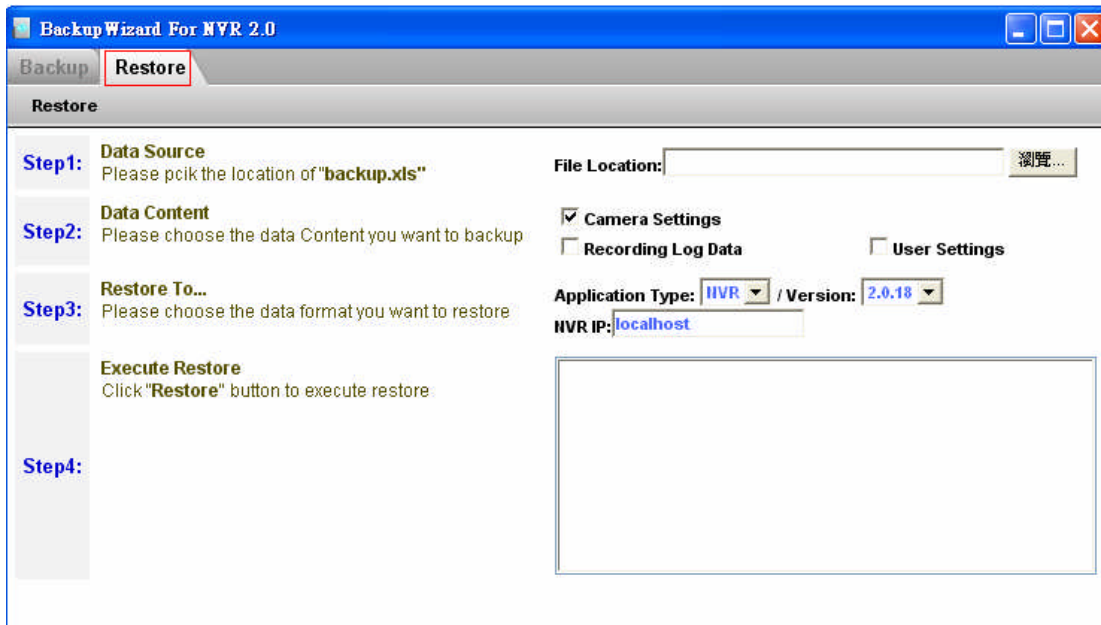


Step 5: Backup Successfully:



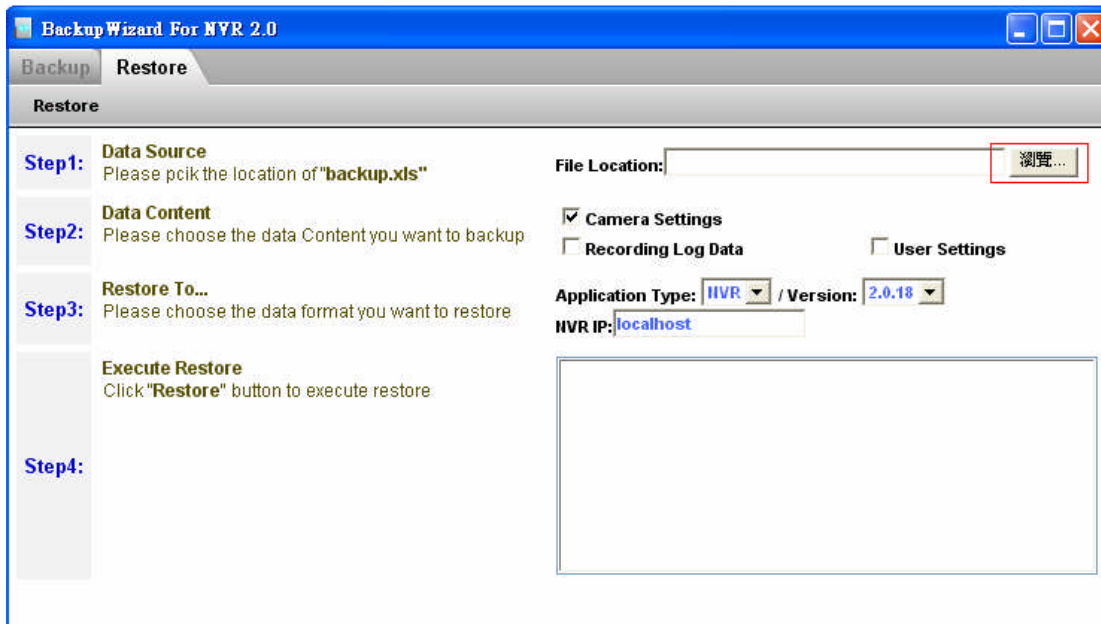
Restore to Database

Step 1: Click label to switch to restore function

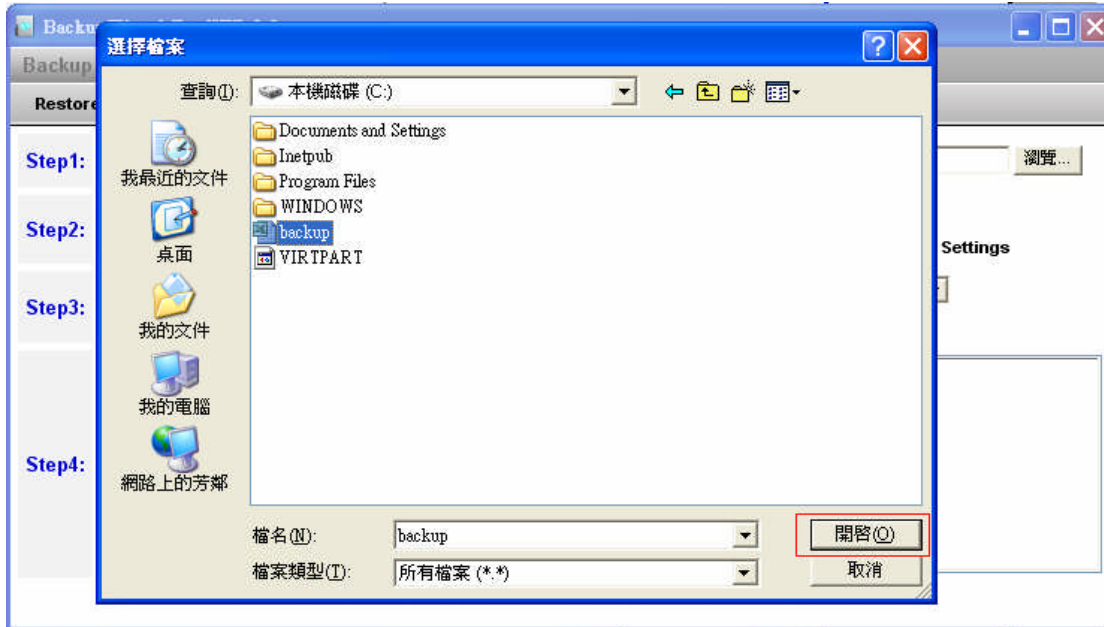


Step 2: Choose the data Source you want to restore:

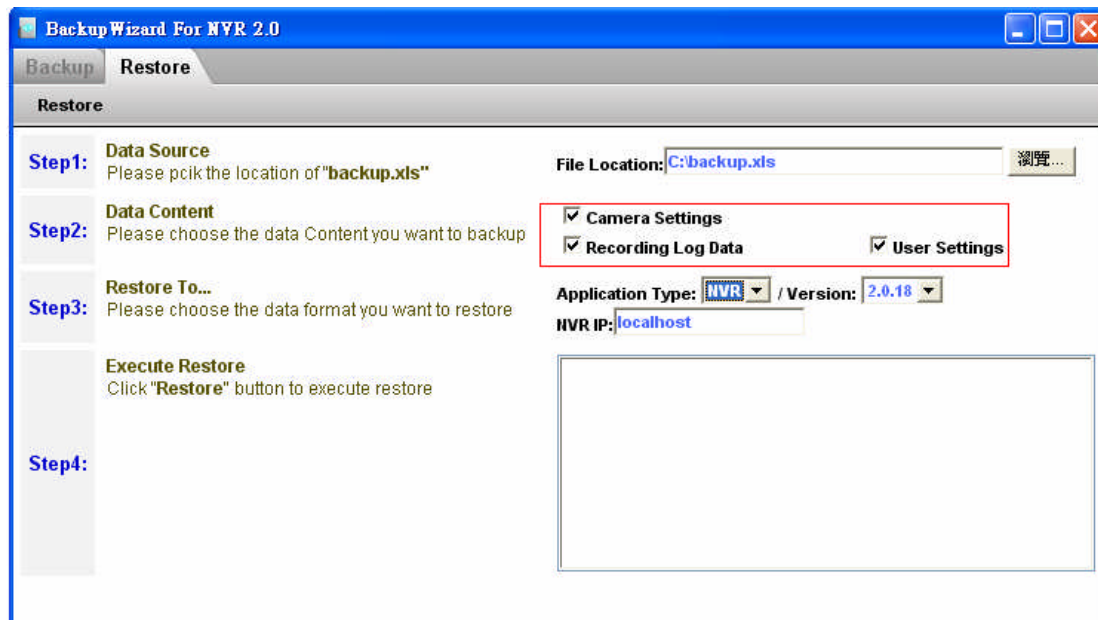
1. Click browse button to select file.



2. Click Open button to open file

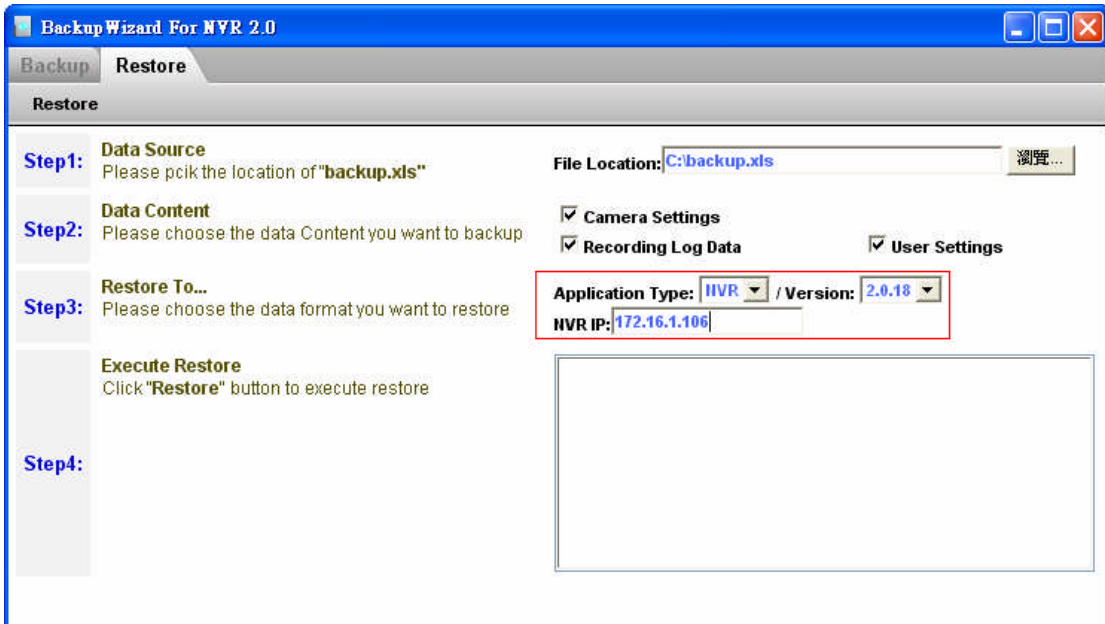
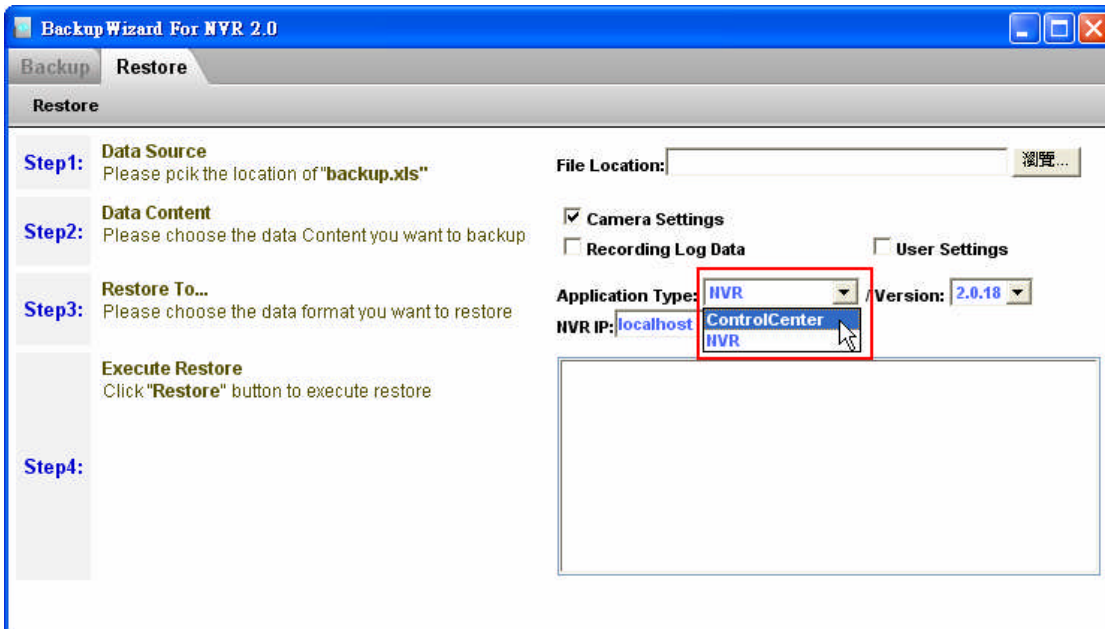


Step 3: Choose the data Content you want to restore:



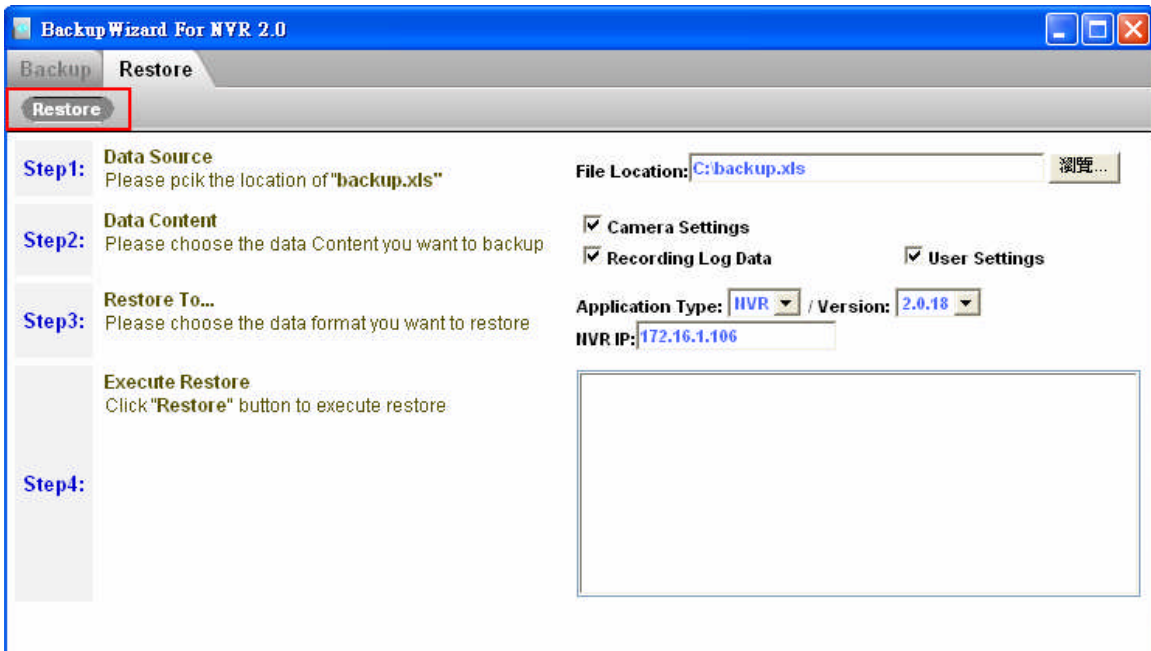
Step 4: Choose Restore to target:

1. Select application version and type the server IP.



Step 5: Start Restore:

1. Click restore button.



Step 6: Restore successfully:

1. Restore Finished.

