

Utility
IP Utility
V3.3

User's Manual

Table of Contents

<i>Getting Started</i>	<i>1</i>
Start IP Utility	1
<i>IP Utility Listing User Interface</i>	<i>2</i>
Understating the User Interface	2
Server Information	1
Server Detail Information	2
The Page of Server Detail Information	2
Edit	2
Edit Details	3
<i>Firmware Upgrade User Interface</i>	<i>1</i>
Understating the User Interface	1
The Page of Firmware Upgrade Setting	2
<i>IP Utility Backup and Restore</i>	<i>3</i>
Backup	3
Restore	1

1 Getting Started

Start IP Utility

To start IP Utility, double-click the “IP Utility” icon on the desktop.



After double-click “IP Utility”, you will see the page.

It's searching device.

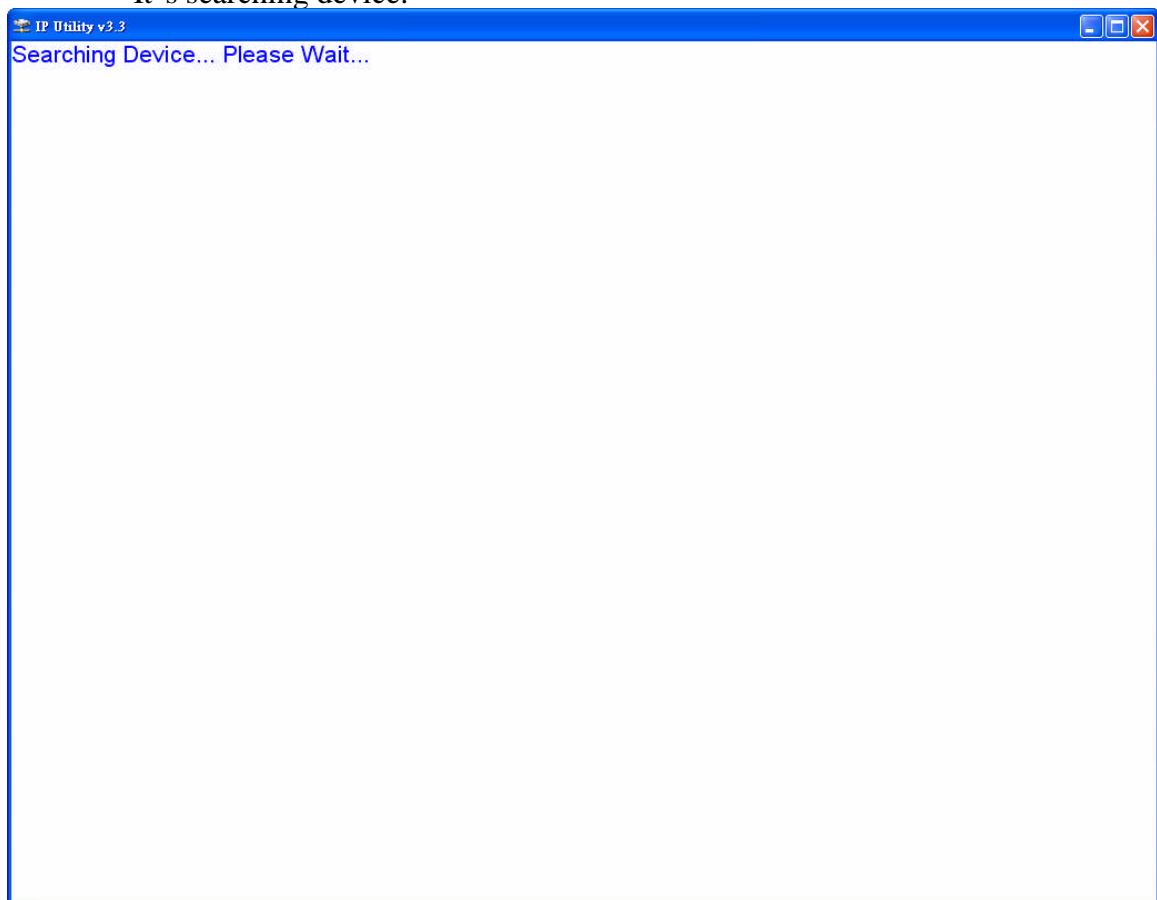


Figure 1. IP Utility

2

IP Utility Listing User Interface

IP Utility is designed with a user-friendly interface, and deployed with minimal training.

Understating the User Interface

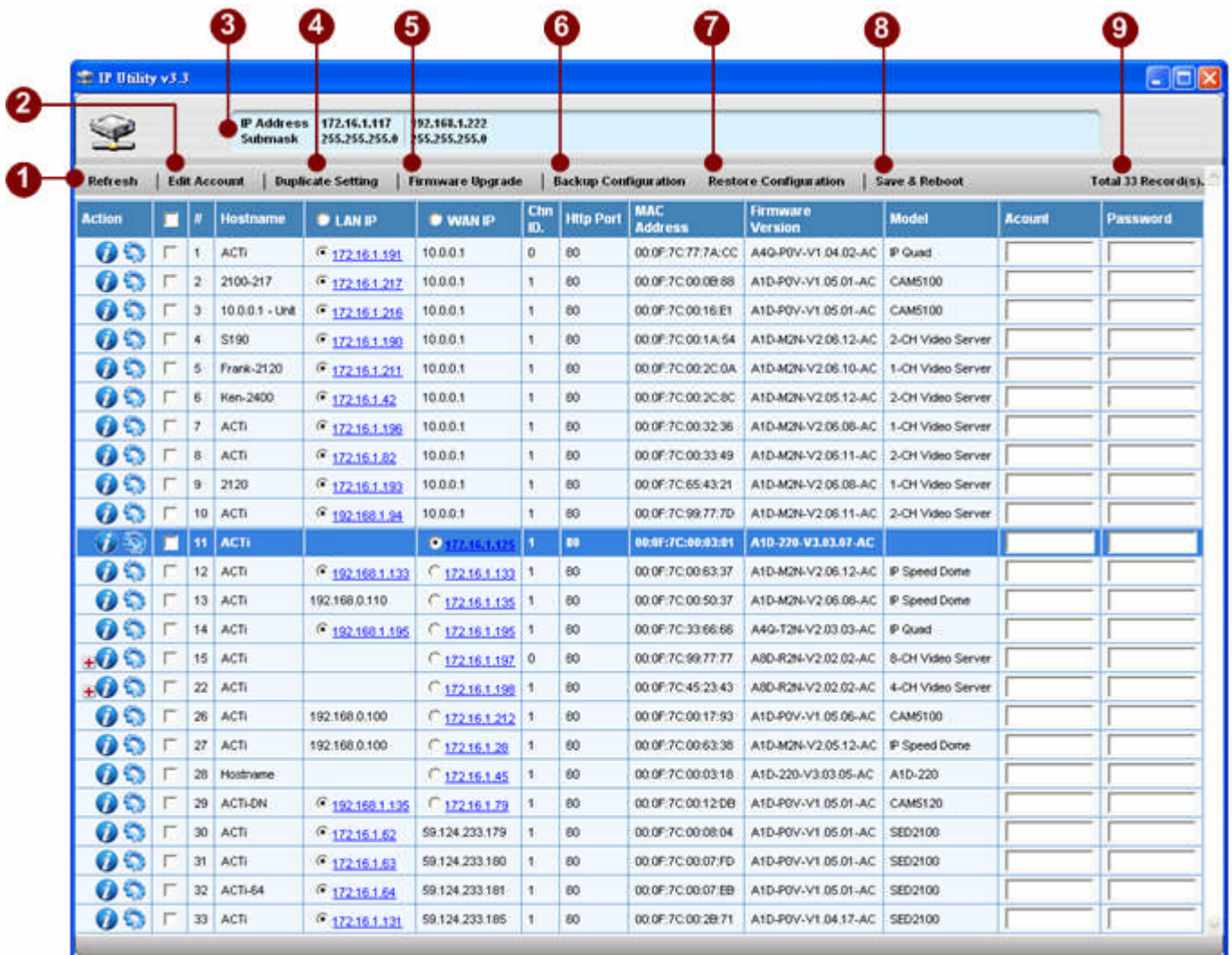


Figure 2. IP Utility Listing User Interface

1. **Refresh:** Refresh this page and search available servers again.
2. **Edit Account:** Display a page to set account and password, and fill setting of selected connections with those data be used to login servers.
3. **IP Address Information:** Display a page to set account and password, and fill setting of selected connections with those data be used to login

servers.

4. **Duplicate Setting:** Click this button to let “Video Setting” “Serial Port Setting” “Date/Time” of selected connections to be changeable.
5. **Firmware Upgrade:** Update all setting of selected connections, and servers will reboot after several minutes.
6. **Backup Configuration:** Backup the setting of selected connections.
7. **Restore Configuration:** Restore the setting of selected connections.
8. **Save and Reboot:** Select all or cancel all selected connections.
9. **Total search listing:** All connections are connected by LAN IP

Server Information

Action	#	Hostname	LAN IP	WAN IP	Chn ID	Http Port	MAC Address	Firmware Version	Model	Account	Password
	1	ACT1	172.16.1.191	18.8.8.1	8	80	98:6F:3C:7D:7A:CC	A4G-P8V-V1.84.87-AC	P Quad	Admin	*****
	2	2100-217	172.16.1.217	10.0.0.1	1	80	00:0F:7C:00:0B:88	A1D-P0V-V1.05.01-AC	CAMS100	Admin	*****
	3	10.0.0.1 - Unit	172.16.1.210	10.0.0.1	1	80	00:0F:7C:00:16:E1	A1D-P0V-V1.05.01-AC	CAMS100	Admin	*****
	4	S190	172.16.1.190	10.0.0.1	1	80	00:0F:7C:00:1A:54	A1D-M0N-V2.06.12-AC	2-CH Video Server	Admin	*****
	5	Frank-2120	172.16.1.211	10.0.0.1	1	80	00:0F:7C:00:2C:0A	A1D-M0N-V2.06.10-AC	1-CH Video Server		
	6	Ken-2400	172.16.1.42	10.0.0.1	1	80	00:0F:7C:00:2C:8C	A1D-M0N-V2.05.12-AC	2-CH Video Server		
	7	ACT1	172.16.1.196	10.0.0.1	1	80	00:0F:7C:00:32:36	A1D-M0N-V2.06.05-AC	1-CH Video Server		
	8	ACT1	172.16.1.82	10.0.0.1	1	80	00:0F:7C:00:33:48	A1D-M0N-V2.06.11-AC	2-CH Video Server		
	9	2120	172.16.1.193	10.0.0.1	1	80	00:0F:7C:00:35:21	A1D-M0N-V2.06.08-AC	1-CH Video Server		
	10	ACT1	192.168.1.94	10.0.0.1	-1	80	00:0F:7C:99:77:7D	A1D-M0N-V2.06.11-AC	2-CH Video Server		
	11	ACT1		172.16.1.125	1	80	00:0F:7C:00:03:01	A1D-220-V3.03.07-AC			
	12	ACT1	192.168.1.133	172.16.1.133	1	80	00:0F:7C:00:63:37	A1D-M0N-V2.06.12-AC	P Speed Done		
	13	ACT1	192.168.0.110	172.16.1.135	1	80	00:0F:7C:00:50:37	A1D-M0N-V2.06.08-AC	P Speed Done		
	14	ACT1	192.168.1.195	172.16.1.195	1	80	00:0F:7C:33:66:66	A4G-T2N-V2.03.03-AC	P Quad		
	15	ACT1		172.16.1.197	0	80	00:0F:7C:99:77:77	A8D-R2N-V2.02.02-AC	8-CH Video Server		
	23	ACT1		172.16.1.198	1	80	00:0F:7C:45:23:43	A8D-R2N-V2.02.02-AC	4-CH Video Server		

Figure 3. Server Information

1. **Action:**
2. **Hostname:**



NOTE: Before connecting a server, make sure you have chosen the correct type of IP for your device.

3. **LANIP**
4. **WANIP:**
5. **Channel:**
6. **Http Port:**
7. **Mac Address:**
8. **Firmware Version:**
9. **Model:**
10. **Account**
11. **Password**
12. **Expand Multi-Channel List**

Server Detail Information

Action	#	Hostname	LAN IP	WAN IP	Chn ID	Http Port	MAC Address	Firmware Version	Model	Account	Password
	1	ACTI	172.16.1.191	10.0.0.1	0	80	00:0F:7C:77:7A:CC	A4Q-P0V-V1.04.02-AC	P Quad		
	2	2100-217	172.16.1.217	10.0.0.1	1	80	00:0F:7C:00:0B:68	A1D-P0V-V1.05.01-AC	CAM5100		
	3	10.0.0.1 - Unit	172.16.1.216	10.0.0.1	1	80	00:0F:7C:00:16:E1	A1D-P0V-V1.05.01-AC	CAM5100		
	4	S190	172.16.1.190	10.0.0.1	1	80	00:0F:7C:00:1A:54	A1D-M2N-V2.06.12-AC	2-CH Video Server		
	5	Frank-2120	172.16.1.211	10.0.0.1	1	80	00:0F:7C:00:2C:0A	A1D-M2N-V2.06.10-AC	1-CH Video Server		
	6	Ken-2400	172.16.1.42	10.0.0.1	1	80	00:0F:7C:00:2C:8C	A1D-M2N-V2.05.12-AC	2-CH Video Server		
	7	ACTI	172.16.1.195	10.0.0.1	1	80	00:0F:7C:00:32:36	A1D-M2N-V2.06.08-AC	1-CH Video Server		
	8	ACTI	172.16.1.82	10.0.0.1	1	80	00:0F:7C:00:33:49	A1D-M2N-V2.06.11-AC	2-CH Video Server		

Figure 4. Server detail information

1. Check the checkbox
2. Type account and password
3. Click check detail icon.

The Page of Server Detail Information

LAN IP	172.16.1.191
Firmware Version	A4Q-P0V-V1.04.02-AC
MAC Address	00:0F:7C:77:7A:CC
Factory Default Type	NTSC, Svideo, No Audio (0x12)
SYSTEM	Embedded system
TYPE	Encoder
NO OF CHANNEL	1 channel
MULTIPLEXING	No multiplexing
NO OF AUDIO WAYS	No Audio
VIDEO FPS	Constant
VIDEO RESOLUTION	N720x480
VIDEO BITRATE	1.2M

Figure 5. The Page of Server detail Information

Page of Edit Account

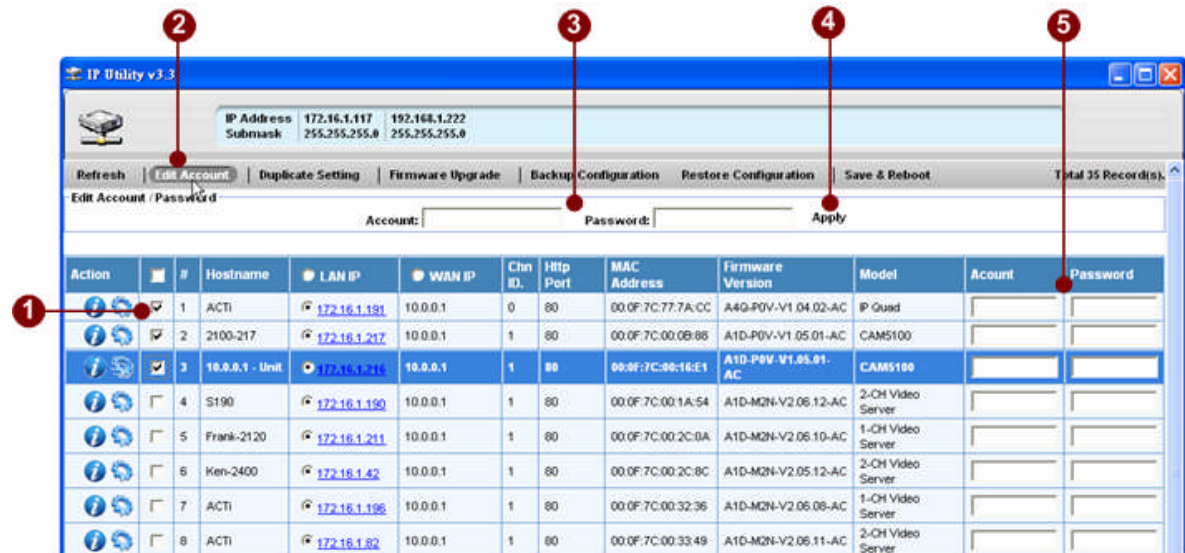


Figure 6. The Page of Edit Account

1. **Checkbox** : click checkbox.
2. **Edit Account**:
3. **Account and Password** : type account and password.
4. **Apply**: Click apply button
5. **Account and Password**: Auto fill account and password.

Edit

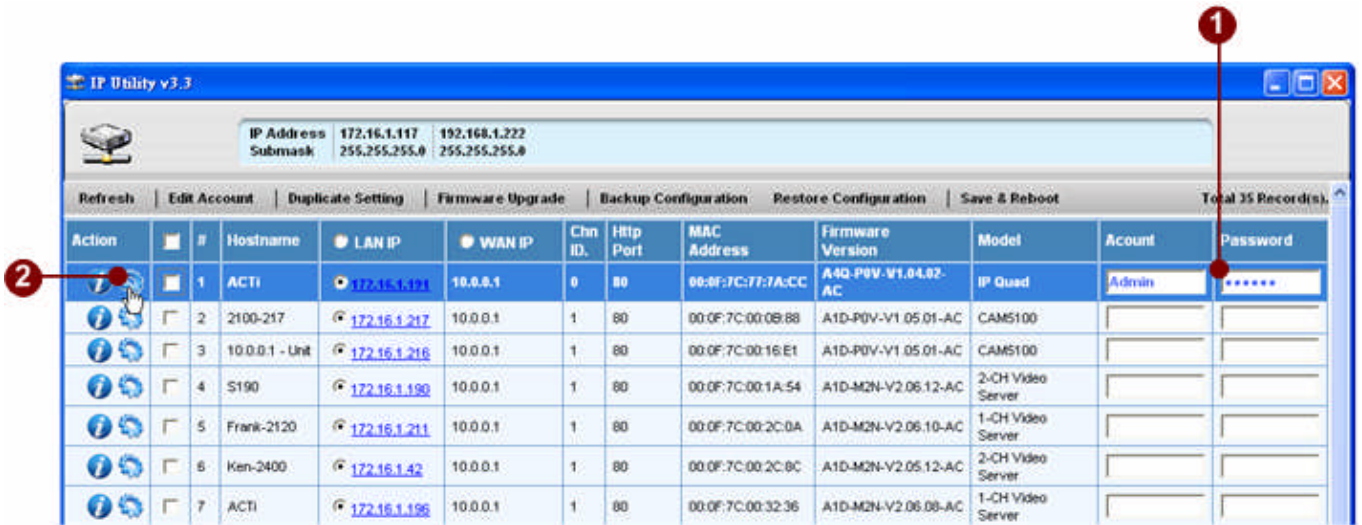


Figure 7. Edit Account

1. **Account&Password** : type account and password
2. **Action** : click on this to change the Hostname, IP Address and port number.

Edit Details

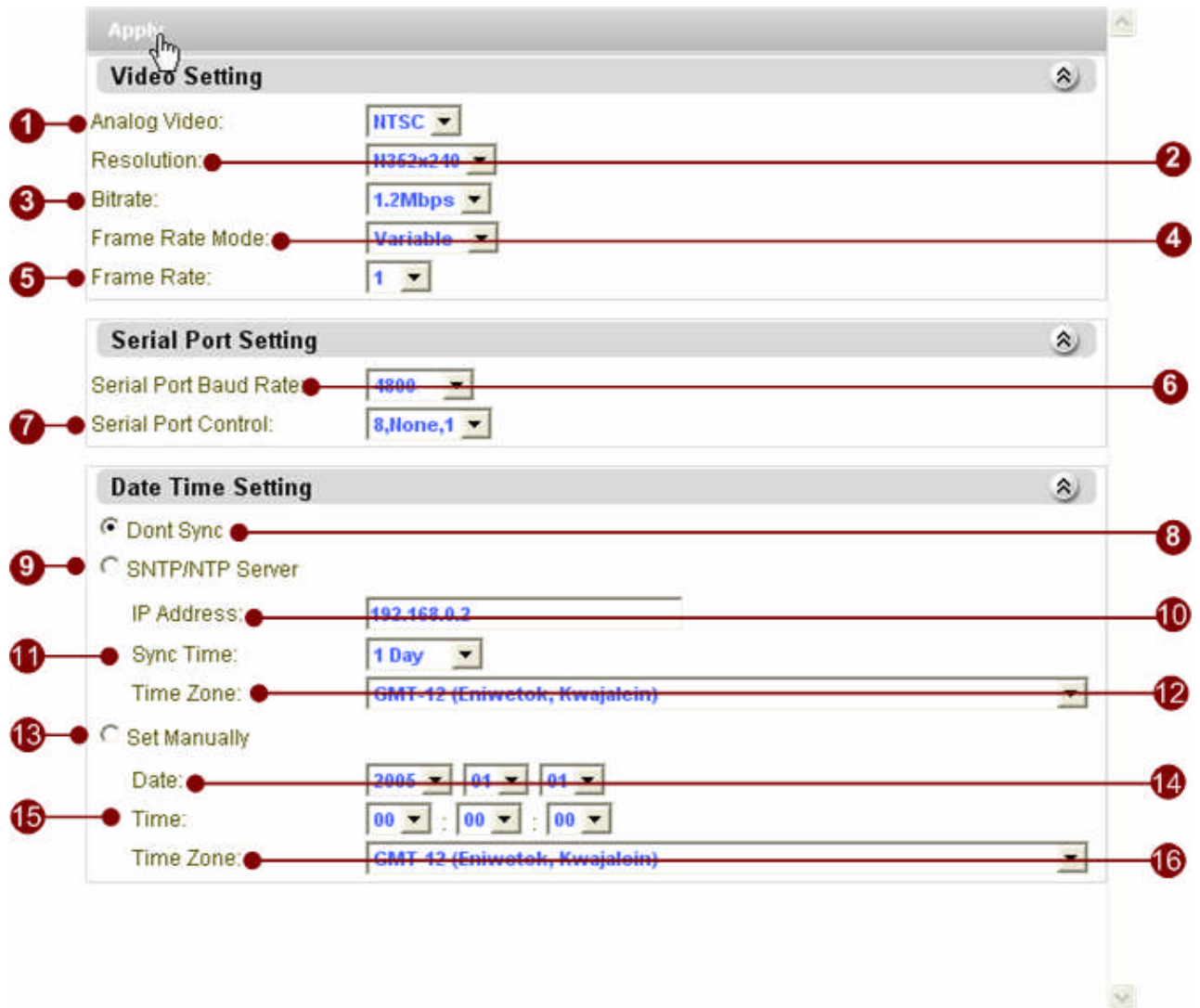


Figure 8. Edit Details

1. **Analog Video: NTSC, PAL video standard**
2. **Resolution: D1, CIF, QCIF**
3. **Bitrate: 3Mbps, 2.5Mbps, 2Mbps, 1.5Mbps, 1.2Mbps, 1Mbps, 750Kbps, 500Kbps, 384Kbps, 256Kbps, 128Kbps, 64Kbps, 28Kbps**
4. **Frame Rate Mode; Variable, Constant Frame Rate**
5. **Frame Rate: Frame rate selection**
6. **Serial Port Baud Rate: 19200, 9600, 4800, 2400, 1200**
7. **Serial Port Control: N81, E81, N80**
8. **Don't sync time to server**
9. **Use SNTP/NTP Server to sync time**

10. **NTP Server IP address**
11. **Sync time interval**
12. **Time zone selection**
13. **Set date time manually**
14. **Set date**
15. **Set time**
16. **Time zone selection**
17. **Click “Apply” to apply setting to the IP devices selected**

3

Firmware Upgrade User Interface

Understating the User Interface

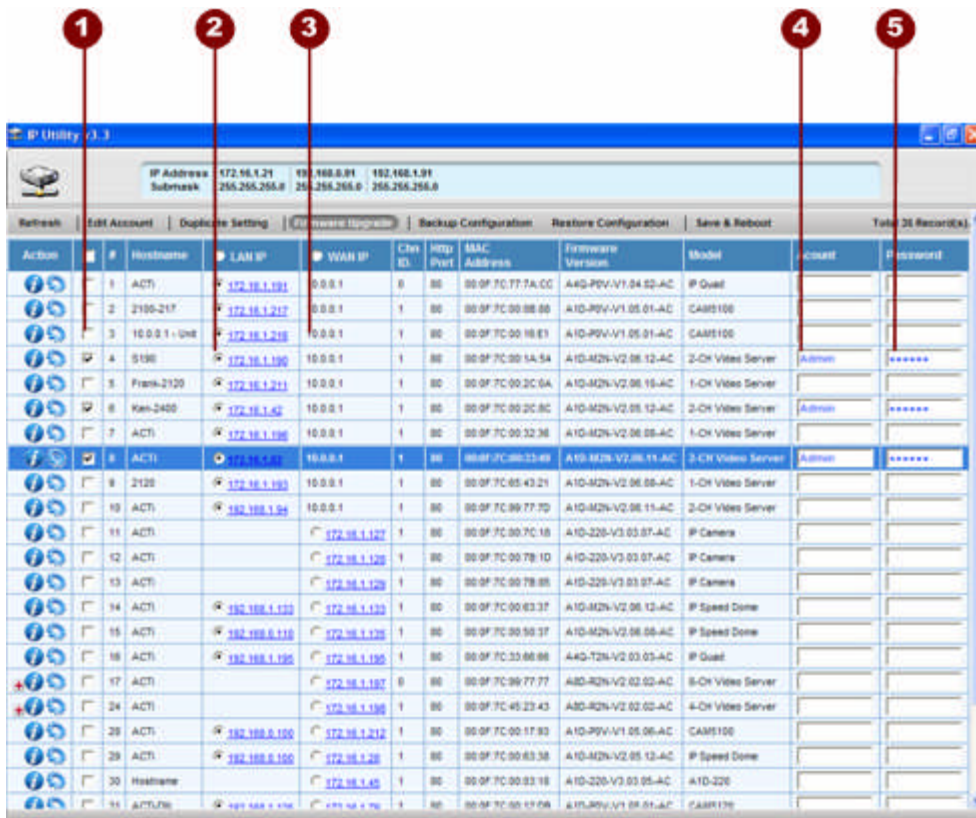


Figure 9. Firmware Upgrade User Interface

1. **Select All:** Select all or Cancel all selected connections of listing.
2. **Select all LAN IP:** All connections are connected by LAN IP.
3. **Select all WAN IP:** All connections are connected by WAN IP
4. **Edit Account:** Display a page to set account and password, and fill setting of selected connections with those data be used to login servers.
5. **Firmware Upgrade:** Display the page of firmware upgrade setting.

The Page of Firmware Upgrade Setting

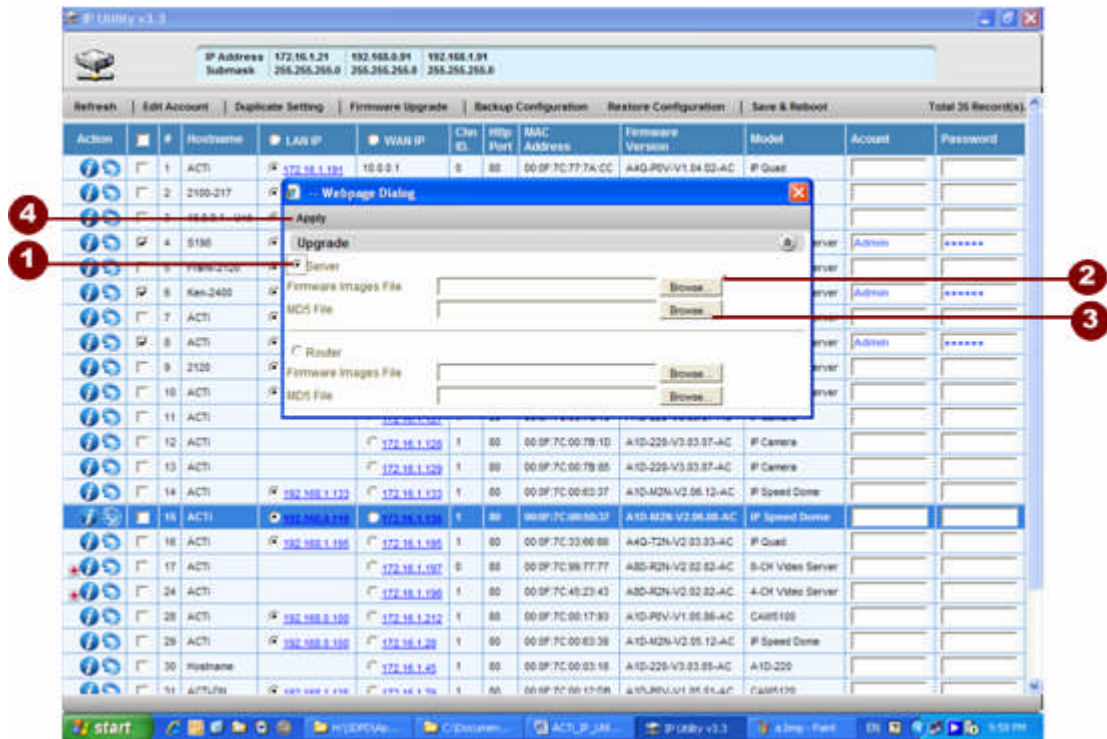


Figure 10. The Page of Firmware Upgrade Setting

1. **Check:** Select the firmware type want to upgrade..
2. **Firmware:** Click “Browse” button to select the firmware you will upgrade.
3. **MD5:** Click “Browse” button to select the MD5 you will upgrade.
4. **Apply:** Click “Apply” button to upgrade firmware and MD5 of this server, after several minutes the server will reboot.



NOTE: Before upgrading the firmware and MD5 of the server, make sure you choose the correct version of this server .

4 IP Utility Backup and Restore

Backup

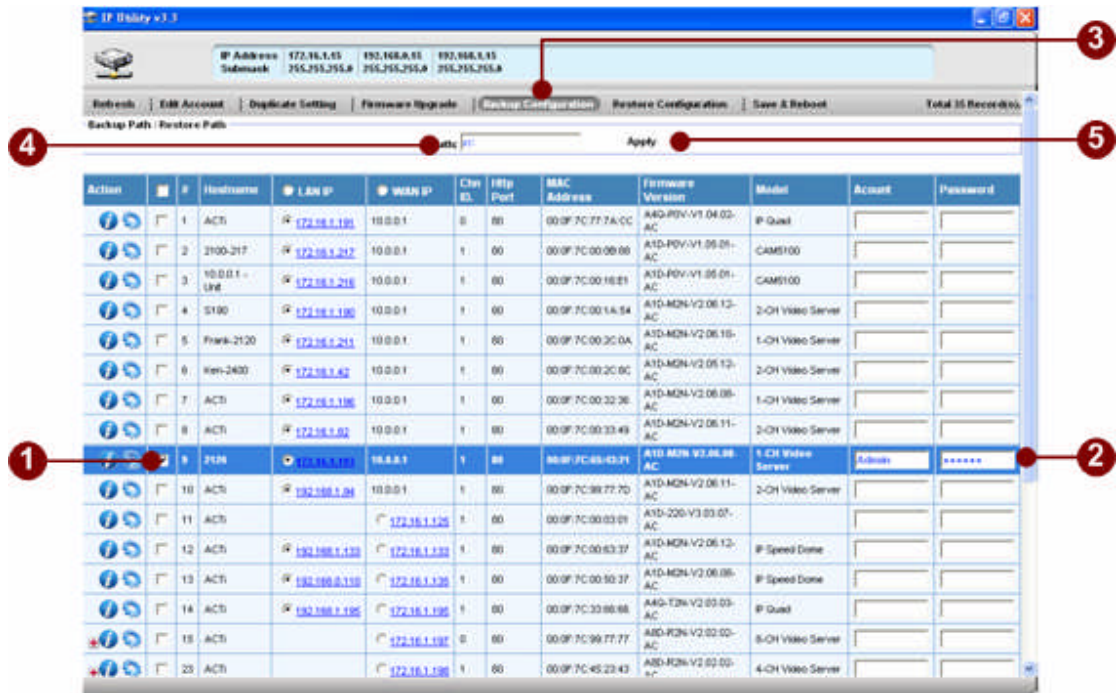


Figure 11. Backup

1. Selecting all the server that your will backup their setting.
2. Enter the authorized account and password by this server.
3. Click "Backup" button to backup the setting of selected servers.
4. Fill the Path in the Textfield.
5. Click "Apply"

Restore

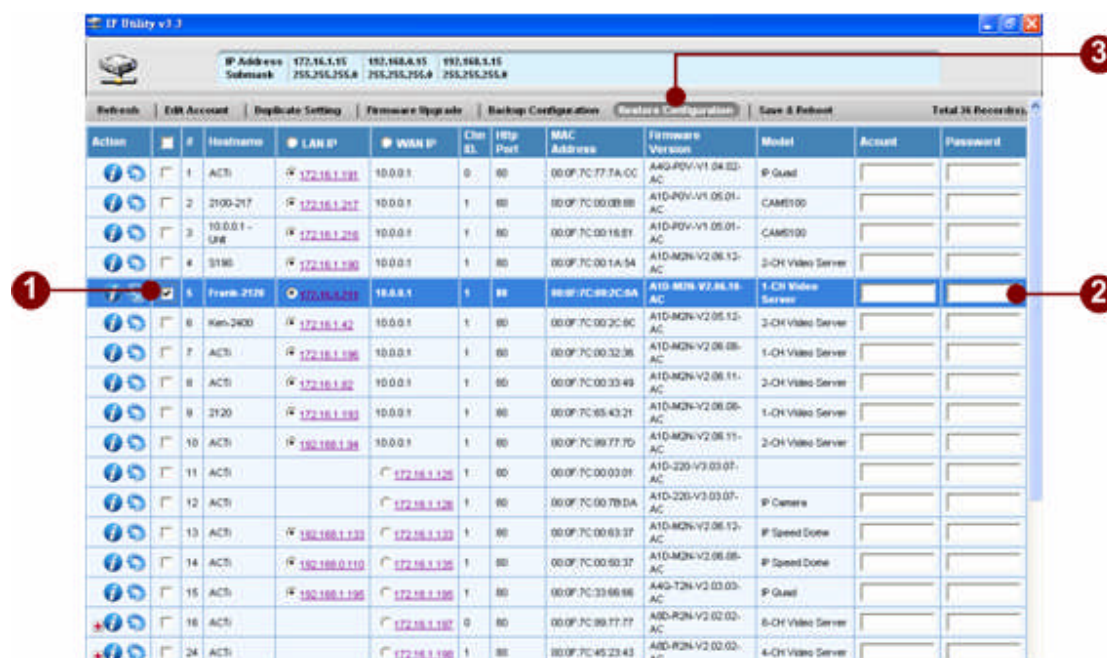


Figure 12. Restore

1. Selecting the server that you will restore its setting.
2. Enter the authorized account and password by this server.
3. Click "Restore" button to display the Page of Restore Setting.



Figure 13. Choose the backup file

1. Choose a Restore File
2. Click "Apply"