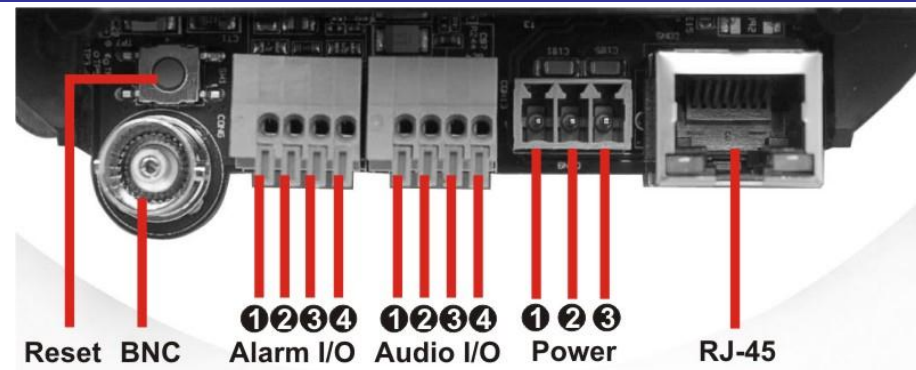


## Ernitec Mercury SX Quick Guide

The Quick Guide is for quick installing and connecting the Full HD Multiple Streaming IP Fixed Dome Camera. For details, please refer to the IP Camera's User Manual.

### Camera's Connectors



Connector	Pin No.	Definition	Remarks	
Reset Button	-	Restore to factory default		
BNC	-	Analog Video Output		
Alarm I/O	1	GND (Input-)	Alarm connection	
	2	Input +		
	3	Output -		
	4	Output +		
Audio I/O	1	Output (L)	Two-way audio transmission	
	2	Output (R)		
	3	GND		
	4	Input		
Power	DC 12V	1	Power	Power connection
		2	Reserved	
		3	GND	
	AC 24V	1	Power-1	
		2	Earth GND	
		3	Power-2	
RJ-45	-	10/100 Mbps Ethernet/ PoE		

### IP Camera Installation

Please follow the instructions below to complete IP Camera installation.

#### Power up the Camera

To power up the IP Camera, please plug the camera's DC 12V/ AC 24V cable into the power terminal block. Alternatively, connect the Ethernet cable to the camera's PoE port and plug the other end of the cable into a PoE switch.



**NOTE:** If using PoE, make sure Power Sourcing Equipment (PSE) is in use in the network.

#### Ethernet Cable Connection

Connect one end of the CAT5 Ethernet cable to the RJ-45 connector of the IP Camera, and the other end of the cable to the network switch or PC.



**NOTE:** In some cases, you may need to use an Ethernet crossover cable when connecting the IP Camera directly to the PC.



**NOTE:** Check the status of the link indicator and activity indicator LEDs; if the LEDs are unlit, please check LAN connection.



Green Link Light indicates good network connection.

Orange Activity Light flashes for network activity indication.

### Before Login to the IP Camera

A client program will be automatically installed on your PC when connecting to the IP Camera. Before logging in to the IP Camera, please ensure downloading the ActiveX control is allowed by either changing the ActiveX controls and plug-ins or setting Internet's security level to default. For further details, please refer to the IP Camera's user manual.

ActiveX Controls and Plug-ins Settings	Internet Security Level
<p><b>Step 1:</b> Start the Internet Explorer (IE).</p> <p><b>Step 2:</b> Select &lt;Tools&gt; from the main menu of the browser. Then Click &lt;Internet Options&gt;.</p> <p><b>Step 3:</b> Click the &lt;Security&gt; tab and select "Internet", and click &lt;Custom level&gt; to change ActiveX settings.</p> <p><b>Step 4:</b> Set "ActiveX controls and plug-ins" items to &lt;Prompt&gt; or &lt;Enable&gt;.</p>	<p><b>Step 1:</b> Start the IE.</p> <p><b>Step 2:</b> Select &lt;Tools&gt; from the main menu of the browser. Then Click &lt;Internet Options&gt;.</p> <p><b>Step 3:</b> Click the &lt;Security&gt; tab and select "Internet."</p> <p><b>Step 4:</b> Down the page, press "Default Level" and click "OK" to confirm the setting. Close the browser window, and open a new one later for accessing the IP Camera</p>

### IP Camera Login

The IP Camera's default IP address is: **192.168.0.250**. Therefore, to access the IP Camera for the first time, set the PC's IP address as: 192.168.0.XXX; for example:

**IP Address: 192.168.0.100**

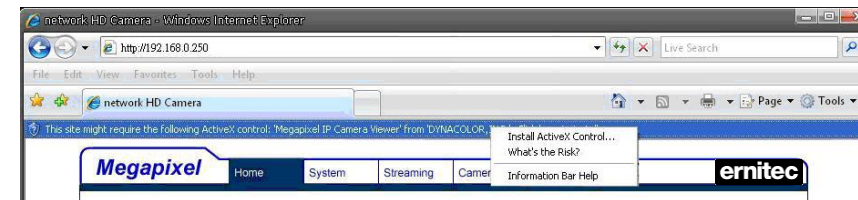
**Subnet Mask: 255.255.255.0**

#### Login ID & Password

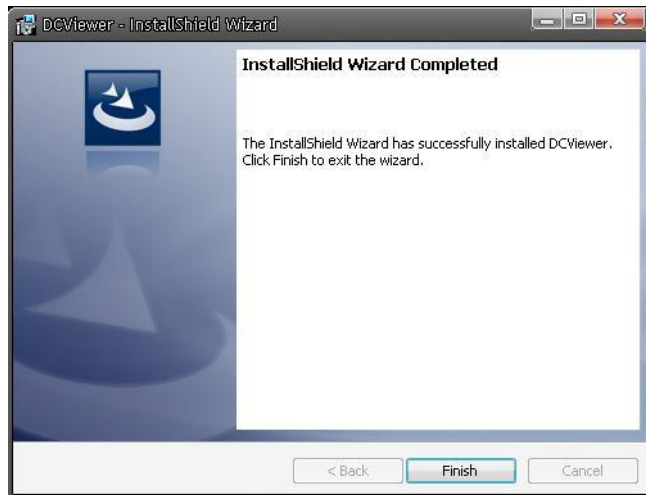
- Key in the IP Camera's IP address in the URL bar of the Web browser window and press "Enter."
- Enter the default user name (**Admin**) and password (**1234**) in the prompt request dialogue. Note that user name is case sensitive.

#### Install the ActiveX Control

- After connecting to the IP Camera, the request for installing the ActiveX control will appear just below the URL bar.
- Right Click on the information bar, and press "Install ActiveX Control..." to permit ActiveX control installation.



- In the pop-up security warning window, click "Install" to start downloading DC Viewer software on the PC.
- Press "Finish" after DC Viewer installation is complete.



### Browser-based Viewer

The main page of the IP Camera user interface is shown as the figure below. Please note that function buttons will vary depending on the camera model.



## Ernitec Mercury SX Quick Guide