

Ernitec Mercury SX 302IR

Full HD vandal IR dome IP Camera



- > Resolution up to 1080p
- > 3-9mm Lens
- > Built-in IR illuminator
- > mechanical IR-cut
- > Edge storage
- > H.264 Main and High profile
- > Power over Ethernet (IEEE 802.3af)
- > 4 year Warranty

Mercury SX 302IRs intuitive design and the click-out electronics module is design with the installer in mind, while setup and programming are quickly accomplished using a browser interface. Remote health checks and software upgrades also ensure easy maintenance, as well as the highest reliability and system integrity.

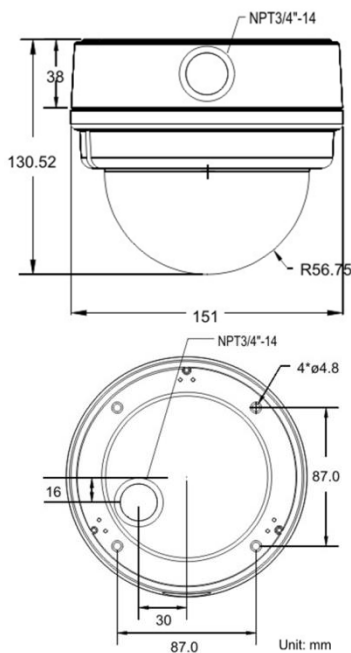
The Mercury SX 302IR can be installed virtually anywhere using POE, AC or DC power, the advanced CMOS progressive scan sensor technology provides outstanding images in both normal and difficult lighting conditions by automatically adjusting white balance to ensure accurate color reproduction Mercury SX 302IR is transmitting crystal clear images in real time Full HD format is made possible through the use of highly efficient H.264 compression, which can result in bandwidth and storage savings of as much as 80 percent compared to M-JPEG and 50 percent compared to MPEG-4 (Part 2) compressions.

The Mercury SX 302IR can encode dual H.264 and M-JPEG streams simultaneously in real time to address different live or recording applications.

The OnVif compliant APIs provide the necessary flexibility to ensure compatibility with most OnVif supported VMS platforms

Technical Specification – Ernitec Mercury SX302IR

Camera		Network	
Camera type	Vandal Dome day / night (ICR Type)	Network Interface	Ethernet (RJ45) 10/100Mbps
Effective Pixels	1920 (H) x 1080 (V)	Supported protocol	IPv4/v6, TCP/IP, UDP, RTP, STPS, HTTP, HTTPS, ICMP, FTP, SMTP, DHCP, PPPoE, Upnp, IGMP, SNMP, QoS
Image Sensor	1/2.7" Progressive CMOS	Internet Browser	Internet Explorer (6.0+), Chrome, Firefox, Safari
Electronic Shutter Speed	1~1/10.000 sec.	Password Levels	User / Administrator
Min. Illumination	0.2 Lux (Colour), 0.0001 Lux (B/W), F1.2, 30IRE	User Account	20
Day/night switching	Mechanical IR-cut	Event Notification	HTTP, FTP, SMTP
Lens		General	
Lens type	Manual focal IR	Onvif	Yes, Onvif profile S
Focal Length	3 ~ 9 mm	Edge Storage	SD/ SDHC card slot (card is not included)
F. number	F1.2 (wide), F2.6 (tele)	Audio	Two-way /G.711 /G.726
Iris	Auto iris	Audio input / output	4 pins terminal block
FOV	103.5° (Wide) ; 34.3° (Tele)	Digital In/out	1 /1 (4 pins terminal block)
Video		Analog Video Output	1Vpp, 75Ω, PAL BNC connector class 2
Video Compression	H.264/MJPEG	Power Voltage	12VDC / 24VAC/ POE (IEEE802.af)
Video stream	Dual / 1080p@25fps H.264 + D1@25fps H.264/MJPEG	Power Consumption	Max. 8.9W / with heater 25.2W
Resolution	Full HD1080p/ SXGA/ HD720p XGA/SVGA/ D1/ VGA/ CIF	Power Connector	3 pins terminal block / RJ45
Brightness	Manual	Fan & Heater	Yes, 16.1W (12VDC/ 24VAC only)
Exposure	Auto / Manual	Built-in IR illuminator	Up to 15meters 24, 850nm LEDs
Sharpness	Manual	Environmental Casing	Weatherproof IP66/ Vandal proof IK10 up to 661.2KgF
Contrast	Manual	Languages	DE, ES, FR, IT, PT, RU, UK
White Balance	Manual / AWB/ ATW	Operating	-40°C ~ +50°C / 10% ~ 90% RH
Saturation	Manual	Temperature/Humidity	
Hue	Manual	Dimensions	ø115.1 x 130.52mm
Digital Zoom	Yes	Weight (Net)	Approx. 900g
WDR-S	On/Off	Warranty	4 years
3D Noise	On/Off	Included accessories	Installation and Management software DVD
Privacy Zone	On/Off	Part number	0070-04302IR
Motion detection	On/Off		
Tampering Alarm	On/Off		



Optional accessories	
1ch video management software	0063-99999
Ernitec Go App	free download

DISTRIBUTED BY