

Ernitec Mercury SX 302p

Full HD vandal P-iris dome IP Camera



- > Resolution up to 1080p
- > Autofocus
- > 3-9mm P-iris Lens
- > Built-in IR illuminator
- > Mechanical IR-cut
- > Edge storage
- > Power over Ethernet (IEEE 802.3af)
- > 4 year Warranty

The Mercury SX302P incorporates Sony's new Exmor™ CMOS image sensor that is specially designed for security applications and includes state-of-the-art image enhancement technologies and with remote lens adjustment for Easy installation.

Remote zoom and focus feature enables convenient focusing over the network together with the special P-Iris lens, eliminating the need for hands-on fine tuning. The remote adjustment functionality ensures that the camera's angle of view is optimized for the area to be monitored so the depth of field, resolution, image contrast and clarity. Good depth of field implies that objects at different distances from the camera are in focus simultaneously.

The Mercury SX 302p can encode dual H.264 and M-JPEG streams simultaneously in real time to address different live or recording applications.

The OnVif compliant APIs provide the necessary flexibility to ensure compatibility with most OnVif supported VMS platforms

Technical Specification – Ernitec Mercury SX302p

Camera	
Camera type	Vandal Dome day / night (ICR Type)
Effective Pixels	1920 (H) x 1080 (V)
Image Sensor	1/2.8" Progressive CMOS
Electronic Shutter Speed	1~1/10.000 sec.
Min. Illumination	0.2 Lux (Color), 0.0001 Lux (B/W), F1.2, 30IRE
Day/night switching	Mechanical IR-cut

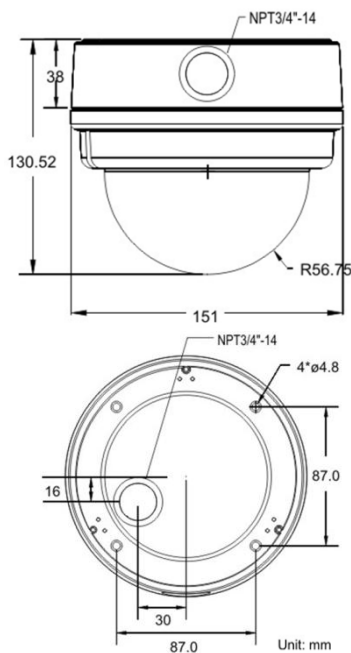
Lens	
Lens type	Autofocus
Focal Length	3 ~ 9 mm
F. number	F1.2 (wide), F2.6 (tele)
Iris	P- iris
FOV	92.93° (Wide) ; 30.9° (Tele)

Video	
Video Compression	H.264/MJPEG
Video stream	Dual / 1080p@25fps H.264 + D1@25fps H.264/MJPEG
Resolution	Full HD1080p/ SXGA/ HD720p XGA/SVGA/ D1/ VGA/ CIF
Brightness	Manual
Exposure	Auto / Manual
Sharpness	Manual
Contrast	Manual
White Balance	Manual / AWB/ ATW
Saturation	Manual
Hue	Manual
Digital Zoom	Yes
WDR	On/Off
3D Noise	On/Off
Privacy Zone	On/Off
Motion detection	On/Off
Tampering Alarm	On/Off

Network	
Network Interface	Ethernet (RJ45) 10/100Mbps
Supported protocol	IPv4/v6, TCP/IP, UDP, RTP, STPS, HTTP, HTTPS, ICMP, FTP, SMTP, DHCP, PPPoE, Upnp, IGMP, SNMP, QoS
Internet Browser	Internet Explorer (6.0+), Chrome, Firefox, Safari
Password Levels	User / Administrator
User Account	20
Event Notification	HTTP, FTP, SMTP

General	
Onvif	yes, se more information on www.onvif.org
Edge Storage	SD/ SDHC card slot (card is not included)
Audio	Two-way /G.711 /G.726
Audio input / output	4 pins terminal block
Digital In/out	1 /1 (4 pins terminal block)
Analog Video Output	1Vpp, 75Ω, PAL BNC connector class 2
Power Voltage	12VDC / 24VAC/ POE (IEEE802.af)
Power Consumption	Max. 8.9W / with heater 25.2W
Power Connector	3 pins terminal block / RJ45
Fan & Heater	Yes, 16.1W (12VDC/ 24VAC only)
Environmental Casing	Weatherproof IP66/ Vandal proof up to 661.2KgF
Languages	English, French, German, Italian
Operating Temperature/Humidity	-40°C ~ +50°C / 10% ~ 90% RH
Dimensions	Ø151 x 130,25mm
Weight (Net)	Approx. 900g
Warranty	4 years
Included accessories	Installation and Management software DVD
Part number	0070-04302p

Optional accessories	
1ch video management software	0063-99999
AppView for smart phones and tablet	free download



DISTRIBUTED BY