

# Ernitec EDNS7000/3

## 400 FPS Digital Video Recorder

**ernitec**

The EDNS7000 provides real-time video recording in DVD quality and fully synchronised voice recordings. This DVR range is the top model within the Ernitec DVR range and provides the best within video recording in the CCTV industry today.

The high video quality makes it very suitable for Casino use, high security application within the industry, military, prisons, banks or wherever the need for high definition and superior image quality is required for later investigations.

By use of modified H.264 hardware compression it is possible to record with 400fps in a resolution of 720x576 (D1). That is equal to live recording (25fps) on each camera. The DVR comes with 16 video inputs.

The unit is equipped 16 channels or audio recording using line inputs and provides fully synchronised voice recordings.

We provide storage solutions for days or month via optional network or direct access storage.

The digital system ensures that the recorded video is safely stored and that it can be retrieved quickly whenever needed.

The EDNS 7000 displays live and recorded video information on a PC monitor. An extra output is available for display of live video via a CCTV Monitor.

### Bandwidth throttle

Network bandwidth throttle allows user to define transmission speeds for maximum network efficiency.

### Activity Detection

More efficient recording can be obtained by the use of activity detection. For each camera a special mask can be set-up for the desired area of motion to be recorded. Using activity detection requires less hard disk space, without compromising on the image recording.

### Smart Search Functions

Search the recorded images by date, time and camera sensor event. It is also possible to set-up specific blocks or areas to search within. Found video images can be stored on storage media or printed out.

### DVD RAM for File Back-up

The system provides the possibility of copying suspicious events to an internal DVD RAM for long-term storage.

### Alarm Recording (optional)

By adding the optional EDNS16alarm unit, it is possible to connect 16 alarm sensors to the DVR. When a sensor is selected for a camera, the connected camera will immediately capture any motion detected by the sensor. Multiple cameras can be connected to a single sensor. There are two recording modes, normal and intensive mode.



There are 16 control outputs. Each output can be automatically triggered by any alarm.

### Network Solutions

The EDNS7000 may be used in a local or wide area network for remote surveillance. Any number of EDNS7000 units may be connected to a 100/1Gb BaseT network card, providing multiple connectivity to multiple recorders, vast remote locations and multi-channels all from multiple review stations, installed with RemoteManager PC software.

### Guarantees the Best Reliability and Stability

- *Auto-rebooting*: After the power supply is recovered from the power failure, the DVR automatically reboots and maintains recording normally.
- *Auto-recovery*: The HDD protection software prevents the damage of the HDD's system files when there is a power failure and it is not able to reboot.
- *Watchdog*: when there is an abnormal halt during the operation it resets in 5 minutes and reboots.

### Easier Control at the On-Site & Remote-Site

EDNS 7000 supports on-site and remote control of cameras equipped with PTZ controller through RS485 using Remote Agent networking software.

### Sound Recording

Series EDNS7000 DVR is equipped with a sound card for the recording of synchronised audio on 16 channels.

### Proprietary Compression Technology

Modified H264 video compression provides the industry's most powerful compression of video images for fast processing speed and high image resolution.

High compression efficiency achieved allows fast network transmission of recorded image files over a variety of network settings for live viewing, remote playback or remote file copy.

### Prevents Alteration of Images by Encryption and Password

Alteration and forgery of images is impossible. Users can only view images in the Viewer program, because of the powerful encryption. If a password was specified to the image files, only the person, who knows it, can view the files.

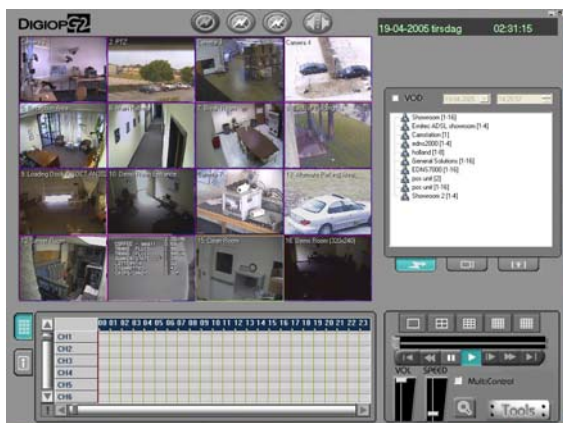
Image files recorded with DigiOpG2 can be provided as legal and forensic evidence.

### Remote Live View, Playback, File Copy

The EDNS7000 DVR comes with very advanced network software as standard. The software is named RemoteAgent and with this software it is possible to have remote live view, playback and file copy. It is even possible to receive video from 24 remote sites simultaneously.

The software package provides features like:

- Live Monitoring from Remote DVR
- V.O.D (Playback of Recorded Data of Remote DVR)
- Image File Copy from Remote DVR for Archival
- Remote Control of P/T/Z for connected DVR
- Remote Sensor Alarm (Abnormal Shutdown)
- Technical alarms
- Screen Display: 1,4,9,16,24 ch
- Remote DVR configuration
- RemoteManager PC software



### Order Codes

Basic DVR model: EDNS71000-16EPD. Includes 16 video inputs, 1000GB Hard Disc, DVD drive and Remote software.

For larger HD sizes contact your Ernitec dealer. It is possible to have models with several TB Hard disk storage mounted internally.

Optional modules:

For Dome control, please order the following module.

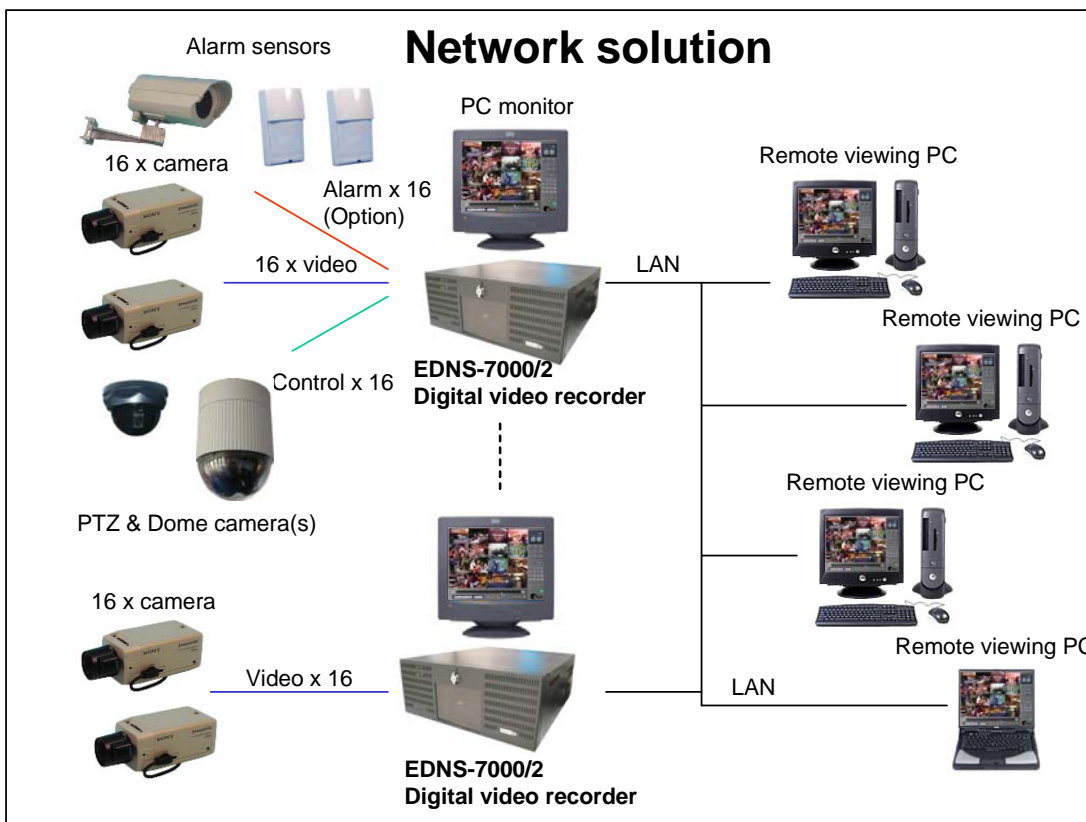
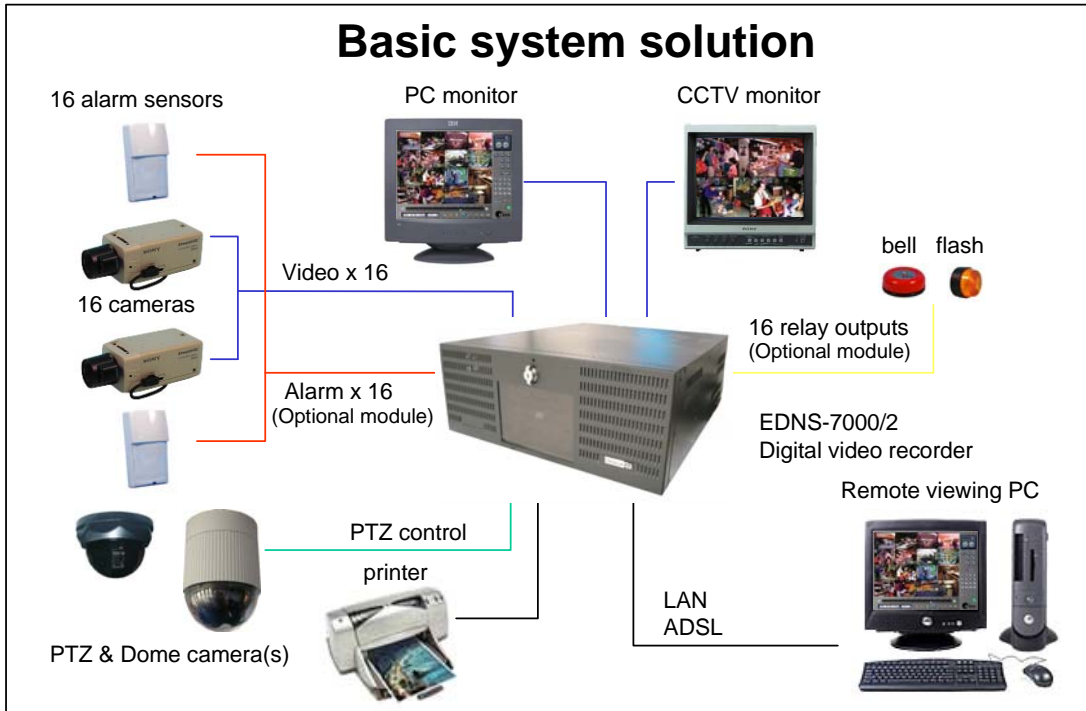
EDNSPTZ: RS232/RS485 converter

For alarm and control functions, please add the following module.

EDNS16alarm: Alarm unit with 16in/16 out



# Applications





## Specifications

Features	EDNS7000/3 series
Basic Models	EDNS7000-16EPD/3
Compression algorithm	Modified H.264 Hardware compression
Data file format	DSF format
Recording period	12~24 GB/day (depend on image complexity)
Hard disk size	From 320GB to 16000GB
# of camera inputs	16 channels
Individual camera resolution	720x576 PAL
Compression modes: Variable bit rate: (VBR)	Yes
Constant bit rate (CBR)	Yes
Recording frame rate at resolution 720 x 576, fps @	400(PAL)
Frame rate for monitoring	400 fps (PAL)
Full motion monitoring by overlay	Yes (up to 16 screen mode)
Analogue TV output	Yes (up to 16 screen mode)
# of sensor inputs (optional module)	16
# of alarm outputs (optional module)	16
Sound Recording (line input)	16
Multi-screen playback	Yes
Event log & search	Yes
Pan/tilt/zoom & pre-set control	Yes
Access control by password	Yes
Individual file encryption	Yes
Still image back up	Yes (JPEG, BMP format)
Still image printer output	Yes
File backup	Internal DVD-RW
Network for remote surveillance	Standard for TCP/IP based network. As option modem
Connection	Multi-to-multi, multichannel
# of maximum connections	100 (recommended 32)
Remote transmission	Live view, playback, file copy
Remote control	Pan/tilt/zoom, preset, aux devices, alarm, screen display, event view
Auto-rebooting after power failure	Yes
Operation conditions	Temperature range from 0°C to +35°C (recommended 20°C)
Dimensions/Weight DVR:	19" x 3Hu, 450 (w) x 132 (H) x 648 (D) mm, aprox 35 Kg.
Dimension/weight alarm unit	19" x 1Hu, 3 Kg.
Power requirements DVR	115 - 230V AC/50Hz/550W



Ernitec A/S  
 Phone: +45 44 50 33 00  
 Fax: +45 44 50 33 33  
 info@ernitec.dk

Ernitec UK  
 Phone: +44 (0) 1903 263125  
 Fax: +44 (0) 1903 263126  
 info@ernitec.co.uk

Ernitec SARL  
 Phone: +33 (0)4 67 15 10 15  
 Fax: +33 (0)4 67 64 01 81  
 info@ernitec.fr

Ernitec GmbH  
 Phone: +49(0)(40) 6756250  
 Fax: +49(0)(40) 67562525  
 info@ernitec.de

www.ernitec.com