

ERIS4000 DVR Series

Real time recorder.

ernitec



The ERIS4000 series from Ernitec is a multifunctional DVR developed to meet the requirements from the retail and bank segments due to full POS support.

Real time recording 100/200/400 D1 and with 3 HDD slots available for internal storage makes it an ideal choice in any high end surveillance. H.264 saves space on hard drives and bandwidth on Network.

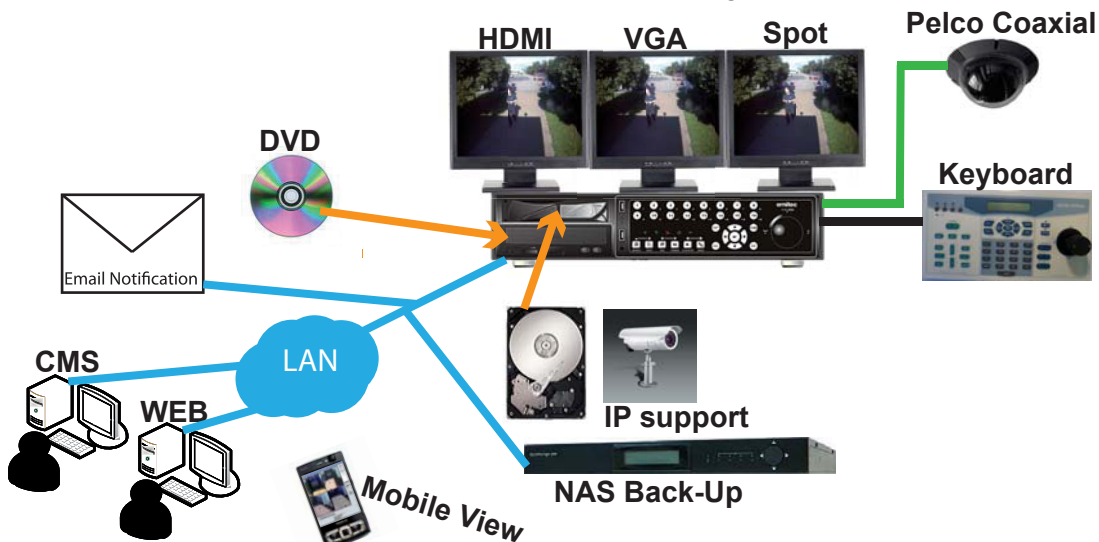
To simplify installation and increase reliability Ernitec has chosen the Linux operating system together with a powerfull Processor.

Superior functions like Full Pentaplex, Intelligent Motion Detection, Event Recording, Easy Burn™, Easy Record™, EasyDDNS™, E-mail notification and SMS provides you with a more optimized system than just a traditional DVR.

Advanced Functions

- H.264 / MPEG4 / MJPEG compression
- Up to 8CH IP camera recording
- Mega pixel recording
- Real-time recording
- Pentaplex operation
- User management
- Per channel configuration
- NTP for time synchronization
- WLAN, SMS
- Built-in Pelco Coaxitron® protocol
- POS function: transaction monitoring
- Up to 3 internal SATA HDDs
- Supports internal DVD+RW
- Digital display output
- Dual-gigabit LAN ports
- 4/8/16CH audio recording
- Mobile View software
- Setup via Explore browser
- CMS for video management

USB stick 4GB
With Full documentation

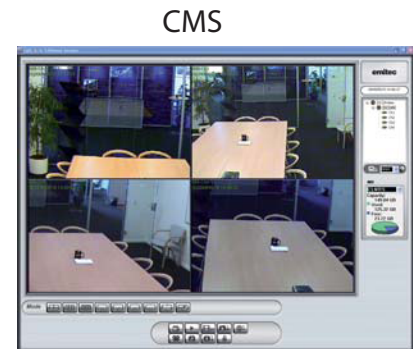


ERIS4000 DVR Series

Specifications and accessories

Item	ERIS4500 4Ch	ERIS41000 8Ch	ERIS42000 16Ch
Video			
Input	BNC × 4, 1.0 Vp-p / 75 ohm	BNC × 8, 1.0 Vp-p / 75 ohm	BNC × 16, 1.0 Vp-p / 75 ohm
Video standard	PAL		
Video operation	* Pentaplex(live / playback, record and network)		
Outputs	Main monitor	S-VHS/PHONO/BNC × 1, 1.0 Vp-p / 75 ohm	
	Call monitor	BNC × 1, 1.0 Vp-p / 75 ohm	
	VGA & HDMI	800 × 600, 1024 × 768, 1280 × 1024 Pixels @ 60 Hz	
Picture refresh rate	PAL: 400 PPS (16ch)		
Digital zoom	2 × 2		
IP camera support	2 Mega-Pixel or 8 VGA		
Audio			
Input	Terminal 4/8/16 x line-in		
Output	Terminal × 1, line-out		
Recording mode	Always real-time record, synchronized with video		
Compression method	ADPCM, G.726		
Data rate	4 KB / s, per channel		
Operation	VCR mode		
Playback	Only for Video original speed		
Recording			
Compression method	H.264/MPEG4/MJPEG advanced simple profile		
Recording mode	Schedule, alarm, motion detection		
Pre-alarm	Yes		
Recording resolution & rate	PAL: 100/200/400 PPS@ D1 720 × 576 pixels		
Recording mode	Best quality, standard, ezRecord, extended record, DSL		
Image size	8 KB to 20 KB / picture		
Storage mode	Linear / circular		
Playback			
Playback	Play, stop, pause, rewind, forward, search		
Playback speed adjustment	Yes 1x, 2x, .32x		
Retrieve	Date / time, event		
Storage			
Built-in HDD	Up to 4 built-in		
Export			
USB	USB 2.0		
USB thumb drive	Support		
Alarm			
Alarm input	× 4, Terminal (TTL)	× 8, Terminal (TTL)	× 16, Terminal (TTL)
Alarm detection	N.C. / N.O., programmable		
Auditory alert	Built-in buzzer		
Motion detection	Yes, with Tress hold		
Video loss detection	Yes		
Alarm relay output	× 2		
	3.0 A / 30 VDC or 3.0 A / 125 VAC		
External I/O board (optional)	Terminal block (2 × 6)	Terminal block (4 × 6)	
Communication			
Communication protocol	RS-485 DSCP		
Remote control software	Remote Agent *		
Network connectivity	ethernet RJ-45 connector, 10/100 Mbps, supports DHCP		
LAN remote control	IE browser, Windows AP		
Dome camera control protocol	Pelco Coaxial, Pelco P, Pelco D, AD422, Fastrax 2, Panasonic		
Remote operation	Monitor, playback, recording, system setup, dome camera control		
On-Screen Display			
Search	Based on time or event		
Play / Pause / REW / FF	Control playback direction & speed, JOG Wheel		
Password control	Yes 8 users with sperate profile		
General			
Unit dimensions (W × H × D)	440 × 90 × 413 mm (17.3 × 2.2 × 16.3 inches)		
Unit weight	6 kg (10.8 lbs)		
Operation temperature	0 °C ~ 40 °C (32 °F ~ 104 °F)		
Power consumption	100 W		
Relative humidity	5 % ~ 85 % non-condensing		
Order info	0063-08330	0063-08340	0063-08350

* Software requirements: Windows 2000, Xp or Vista, Intel PIII or faster, 512 MB RAM (1 GB RAM or above is recommended)
Microsoft Internet Explorer 6.0 SP2, LAN or Internet connection.



YOUR VIDEO SURVEILLANCE SUPPLIER

Ernitec A/S
Phone: +45 44 50 33 00
Fax: +45 44 50 33 33
info@ernitec.dk

Ernitec UK
Phone: +44 (0) 1903 263 125
Fax: +44 (0) 1903 263 126
info@ernitec.co.uk

Ernitec SARL
Phone: +33 (0)4 67 15 10 15
Fax: +33 (0)4 67 64 01 81
info@ernitec.fr

ernitec

www.ernitec.com