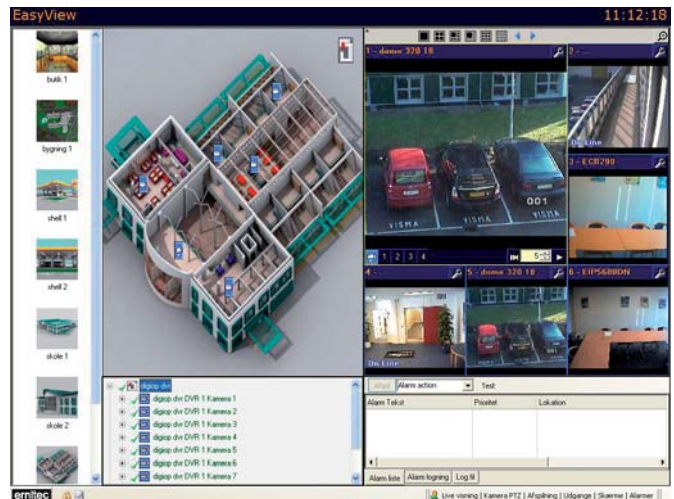


EasyView™ is an advanced Graphical User Interface that provides not only control over a selected range of the Ernitec IP based products such as the EDNS DVR series, Ernitec NVR and Ernitec IP cameras but also integration between these and other products.

- Integration with the EDNS2000, EDNS4000/Hybrid, EDNS6000X/Hybrid and EDNS7000R/Hybrid series
- Integration with Ernitec NVR Server
- Integration with Ernitec IP cameras including megapixel cameras
- Integration with Ernitec System-X via RS-232 or via IP Interface
- Advanced Alarm handling
- Import of maps, all standard graphic formats are supported
- Drag-and-drop camera selection
- Link hierarchical sets of maps
- Easy to configure and operate
- PTZ Control via mouse or joystick (option)
- Sequences and macros
- Selectable screen layout
- Full blown security application
- Operator log



Example of EasyView™ screen

### Integration possibilities

The EasyView™ software can be used with most of the Ernitec IP-based products. This makes it the ideal platform for remote monitoring of multiple sites with different products.

### Video viewing

The video signals from the attached devices are viewed in a video window. The video window can be set to show either a single camera or a 4, 6, 8, 9 or 16-split.

### Alarm handling

The alarm handling is designed to provide the operator with a fast and easy-to-understand overview of the alarm status.

All incoming alarms can be prioritised so that the most important alarms automatically override the less important alarms. At the same time, the alarm list constantly shows the operator which alarms still needs to be responded to and he can thereby easily switch between the various alarms in order to provide the fastest alarm response.

The alarm handling includes selection of up to 16 cameras which can come from any source, i.e. they need not come from the same equipment that raised the alarm. PTZ presets as well as output relays can also be activated automatically upon an alarm.

The alarm clearing can be set to follow the alarm input or be forced to be cleared by the operator.

All alarms are logged in a file with information such as time/date, alarm source, when and how the alarm was cleared etc.

### Macros

EasyView™ offers programmable macros which can automate the operation of a system. The macros can be programmed with functions such as camera selection, call of presets and activation of contact outputs.

# EasyView™

## Video Integration Platform

### Operator Log

This log can keep track of the operations of each operator logged into the system. This feature is very suitable for alarm handling centres where e.g. a customer can be charged according to the actual workload.

### Languages

EasyView™ is available in English and Danish.

### Configuration

EasyView™ is designed to be easy to configure. Most of the configuration can be done by wizards which guides the installer through the configuration. It is possible to make camera import directly from System-X and Ernitec NVR.

### Preinstalled on a PC

EasyView™ comes pre-installed on a PC. The PC is by default provided with a 19" Widescreen LCD monitor. The graphics card can either operate in "single screen" or "dual screen", i.e. by adding a second monitor it is possible to e.g. view the maps, alarms lists etc. on one monitor and have all the video signals displayed on the second monitor. The PC can display up to 16 video streams simultaneously. Please refer to the specifications table.

## Specifications and accesories

<b>Software specifications</b>	
Maximum number of maps	1000
Map formats	BMP, GIF, JPG (all standard graphic formats)
Maximum number of cameras	999
Maximum number of alarms	1000
Maximum number of control outputs	1000
<b>Hardware specifications</b>	
<b>Monitor</b>	
Size / type	19" LCD Widescreen
Resolution	1440 x 900
Response time	5 ms (typical)
Contrast ratio	1000:1
Horizontal viewing angle	±80°
Dimensions (H x W x D)	409 x 187 x 445 mm
Power supply	305 W
Net weight	7 kg
<b>Computer/Network Requirements</b>	
Processor	Intel Core 2 Quad Q6600, 2.4 GHz
Operating System	Windows XP
Graphics Card	ATI Radeon HD 2400 XT, Dual Display
RAM	4096 MB RAM
Free Hard Disk space required	200MB free space
CD or DVD Drive	16X DVD+/-RW Drive
USB Ports	7 free USB Port
Pointing Device	Windows compatible Pointing Device
Network connection	100 Mbit Ethernet IP Network

) Always install latest upgrades/service packs from [www.windowsupdate.com](http://www.windowsupdate.com)

YOUR VIDEO SURVEILLANCE SUPPLIER

**ernitec**

# EasyView™

## Video Integration Platform

### Supported Products

EasyView™ is available in four different versions depending on the number of cameras supported. Please contact Ernitec if you require support for more than 999 cameras.

EasyView support the following products:	EasyView™			
	No. of Cameras			
	Max. 16	Max. 64	Max. 256	Max. 999
System-X via I151SX-PCIF	√	√	√	√
System-X via System-X IP	√	√	√	√
EDNS2000 Series DVR	√	√	√	√
EDNS4000/Hybrid Series DVR	√	√	√	√
EDNS6000X/Hybrid Series DVR	√	√	√	√
EDNS7000R/Hybrid Series DVR	√	√	√	√
Ernitec NVR	√	√	√	√
Ernitec IP cameras	√	√	√	√

### Order Codes

Model Name	Order No.	Description
EASYVIEW w/PC UK-16	0087-01001	EasyView SW with PC, max. 16 cameras
EASYVIEW w/PC DK-16	0087-01002	EasyView SW with PC, max. 16 cameras
EASYVIEW w/PC DE-16	0087-01003	EasyView SW with PC, max. 16 cameras
EASYVIEW w/PC FR-16	0087-01004	EasyView SW with PC, max. 16 cameras
EASYVIEW w/PC UK-64	0087-02001	EasyView SW with PC, max. 64 cameras
EASYVIEW w/PC DK-64	0087-02002	EasyView SW with PC, max. 64 cameras
EASYVIEW w/PC DE-64	0087-02003	EasyView SW with PC, max. 64 cameras
EASYVIEW w/PC FR-64	0087-02004	EasyView SW with PC, max. 64 cameras
EASYVIEW w/PC UK-256	0087-03001	EasyView SW with PC, max. 256 cameras
EASYVIEW w/PC DK-256	0087-03002	EasyView SW with PC, max. 256 cameras
EASYVIEW w/PC DE-256	0087-03003	EasyView SW with PC, max. 256 cameras
EASYVIEW w/PC FR-256	0087-03004	EasyView SW with PC, max. 256 cameras
EASYVIEW w/PC UK-999	0087-04001	EasyView SW with PC, max. 999 cameras
EASYVIEW w/PC DK-999	0087-04002	EasyView SW with PC, max. 999 cameras
EASYVIEW w/PC DE-999	0087-04003	EasyView SW with PC, max. 999 cameras
EASYVIEW w/PC FR-999	0087-04004	EasyView SW with PC, max. 999 cameras
EASYVIEW x16 SW on CD	0058-00120	EasyView SW on CD-ROM, max. 16 cameras
EASYVIEW x64 SW on CD	0058-00121	EasyView SW on CD-ROM, max. 64 cameras
EASYVIEW x256 SW on CD	0058-00122	EasyView SW on CD-ROM, max. 256 cameras
EASYVIEW x999 SW on CD	0058-00123	EasyView SW on CD-ROM, max..999 cameras

All packages with PC are available with English, German, French and Danish PC

YOUR VIDEO SURVEILLANCE SUPPLIER

Ernitec Denmark  
Phone: +45 44 50 33 00  
Fax: +45 44 50 33 33  
info@ernitec.dk

Ernitec UK  
Phone: +44 (0) 1903 263 125  
Fax: +44 (0) 1903 263 126  
info@ernitec.co.uk

Ernitec France  
Phone: +33 (0)4 67 15 10 15  
Fax: +33 (0)4 67 64 01 81  
info@ernitec.fr

Ernitec Germany  
Phone: +49(0)(40) 6756250  
Fax: +49(0)(40) 67562525  
info@ernitec.de



www.ernitec.com