

# Hyperion One WL

## WHITE LIGHT ILLUMINATOR

**ernitec**



**ENERGY  
SAVING**



**WALL / HOUSING  
MOUNT BRACKET**



**VANDAL  
PROOF**



**IP66 & IP67  
RATING**



**NO EXTERNAL  
PSU**



**MAINTENANCE  
FREE**

### High Power

*The latest smt led tecnology dare high performance and low power consumption*

### Ready for wall or camera housing

*Easy to install, compatible with any camera housing! Wall/Housing bracket included.*

### Integrated power supply

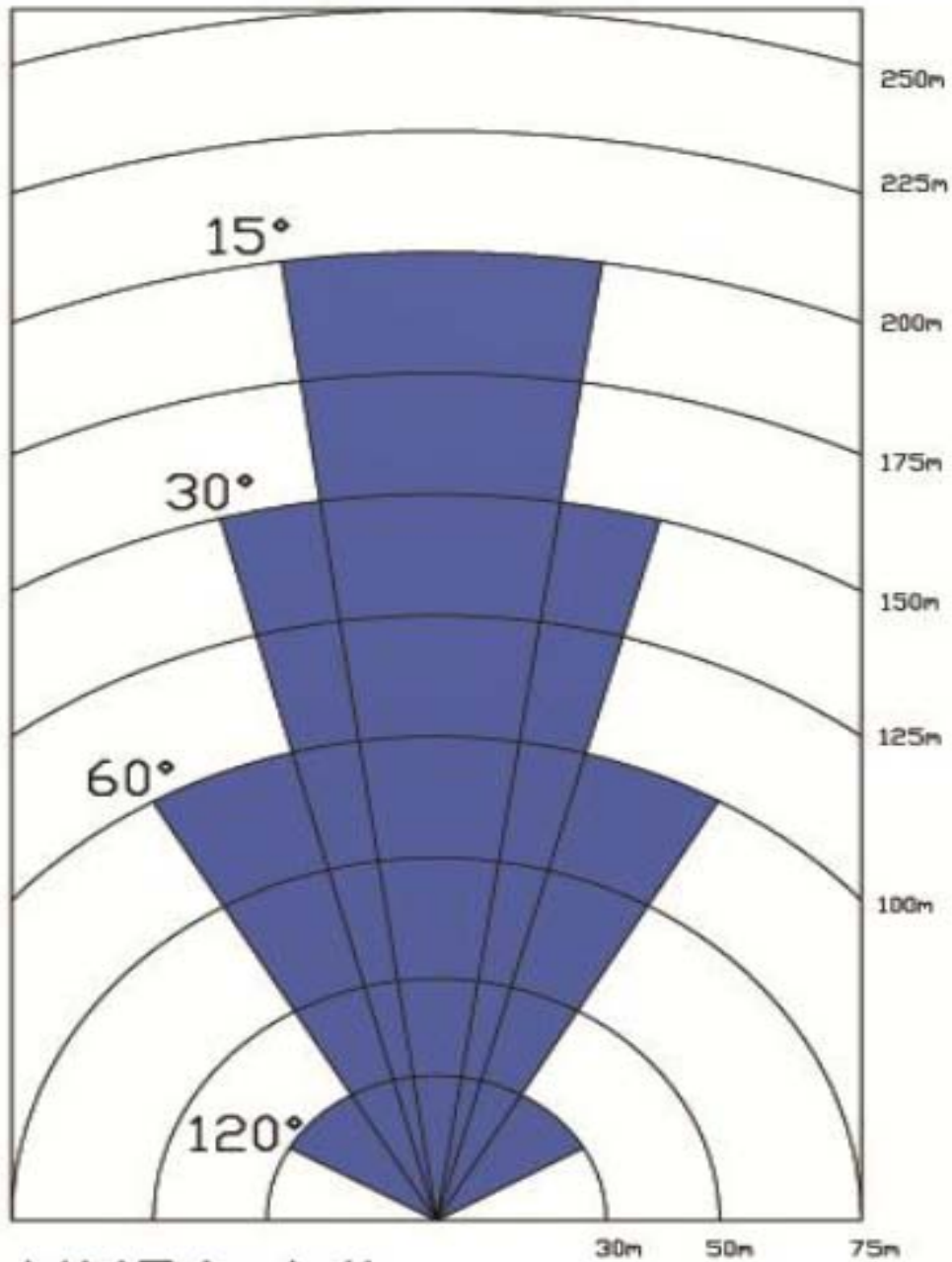
*The integrated constant current power supply allows a quick and easy installation without external box*

### Moulded full Aluminium body

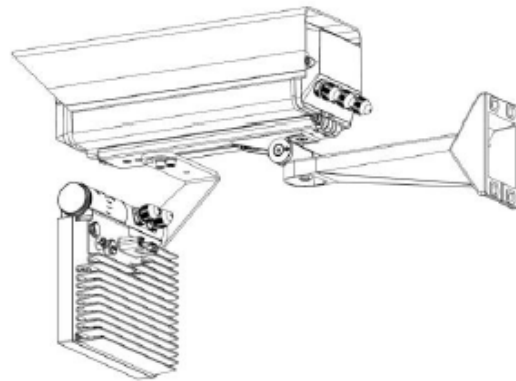
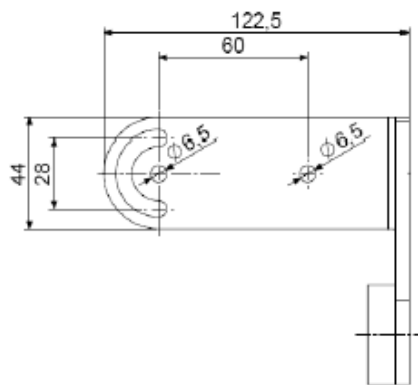
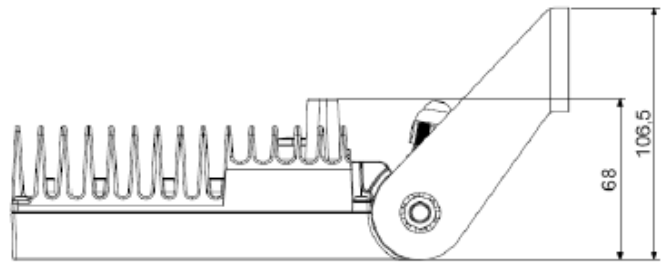
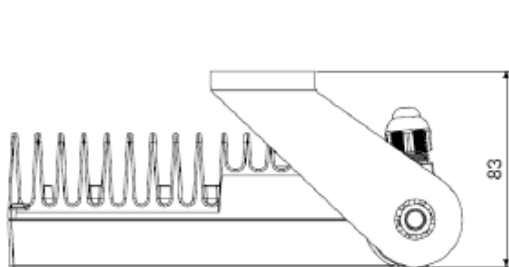
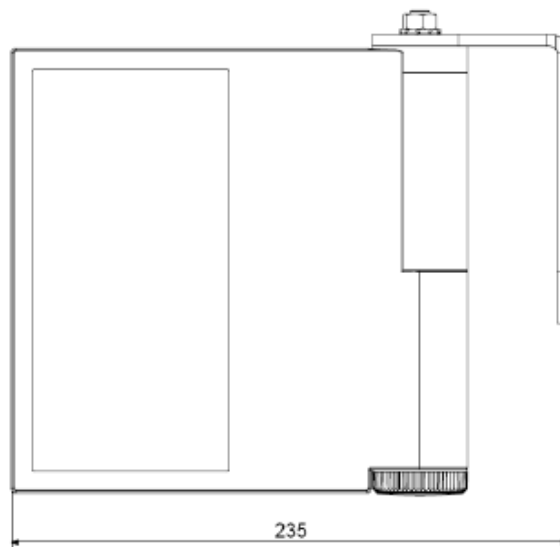
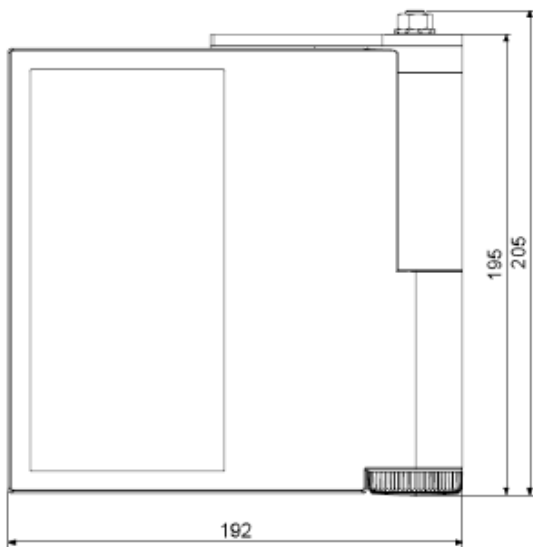
*The sturdy Aluminium body guarantees vandalproof performances as well as heat dissipation*

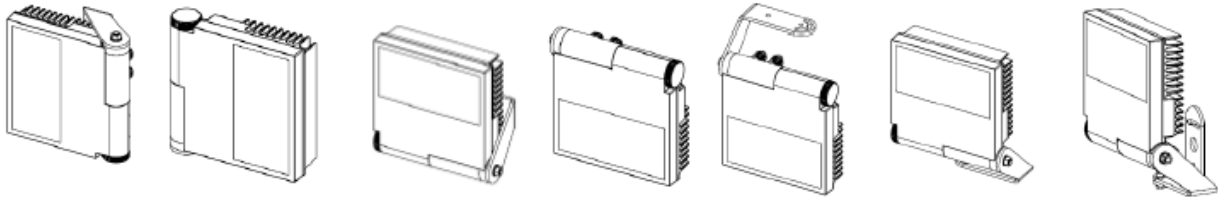
## MODELS

ORDER CODE	Beam Angle	Max Distance		IP Rate	Power supply	Wall / Housing Bracket
HYP1 15 WL	15°	200 m	(219 yd)	IP66/67	Internal 230 V~	●
HYP1 30 WL	30°	150 m	(164 yd)	IP66/67	Internal 230 V~	●
HYP1 60 WL	60°	100 m	(109 yd)	IP66/67	Internal 230 V~	●
HYP1 120 WL	120°	30 m	(33 yd)	IP66/67	Internal 230 V~	●





HYP1 WL





## ACCESSORIES

BWHYP1	Optional Wall Bracket for HYPERION ONE	
BWRHYP1	Hyperion One Adapter for LINEAR Camera Housing	

## SPECIFICATION

<p><b>General</b></p> <ul style="list-style-type: none"> <li>• High efficiency SMT Leds</li> <li>• PC optical beam collimator</li> <li>• typ. color temperature: 6500 K</li> <li>• Aluminium die cast molding and Technopolymers</li> <li>• Radiant body for optimal thermal yield</li> </ul>	<p><b>Electrical</b></p> <ul style="list-style-type: none"> <li>• Wide range power supply: 230 V~</li> <li>• Power: 17 W</li> </ul>
<p><b>Mechanical</b></p> <ul style="list-style-type: none"> <li>• Dimensions: 192 x 195 x 83 mm</li> <li>• Angle adjustable: NO</li> <li>• Beam Pattern: see table</li> <li>• 1 Cable Gland M16 x 1,5 ; precabled (2mt)</li> <li>• 1 M16 Waterproof Plastic Cap</li> </ul>	<p><b>Environmental</b></p> <ul style="list-style-type: none"> <li>• Indoor / Outdoor applications</li> <li>• IP66 and IP67 weatherproof rating (EN60529)</li> <li>• Temperature Range : -50°C to 50°C</li> <li>• RoHS compliant</li> <li>• CE</li> </ul>

Note: Specifications subject to change without notice.

**YOUR VIDEO SURVEILLANCE SUPPLIER**

Ernitec A/S  
 Phone: +45 44 50 33 00  
 Fax: +45 44 50 33 33  
 E-mail: info@ernitec.dk

Ernitec UK  
 Phone: +44 (0) 1903 263 125  
 Fax: +44 (0) 1903 263 126  
 E-mail: info@ernitec.co.uk

Ernitec France  
 Phone +33 (0) 4 67 15 10 15  
 Fax +33 (0) 4 67 64 01 81  
 E-mail: info@ernitec.fr

