

A19C1 19" Composite Monitor

ernitec

Features

- 3D comb filter
- 3D de-interlace
- 3D decoder
- 3D noise reduction
- 2 Composite inputs with loop-through
- 1 VGA input
- 1 HDMI input
- Built-in loudspeakers



Specifications

	A19C1
Display	
Display type	19" Active Matrix TFT LCD Module
Contrast	800:1
Resolution	1280 x 1024 (SXGA)
Response time	5 ms
Display area (H x V)	376.3 x 301.1 mm
Pixel pitch (H x V)	0.294 x 0.294 mm
Brightness	300 cd/m ²
Viewing angle	U/D 75° / 75° L/R 80° / 80°
Horizontal resolution	500 TVL
Video inputs	
Composite input	2 pcs, BNC, loop-through
VGA Input	1 pc. 15pin HD Sub-D
HDMI Input	1 pc.
Audio inputs	
Audio inputs	1 pc. 3.5mm stereo jack, 2 pcs. phono
Speakers	2.5W x 2
Operation	
OSD Control	Picture mode, Contrast, Brightness, Colour, Tint, Sharpness, Colour temperature, Digital Noise Reduction
OSD Language	English, German, French, Italian, Spanish, Russian, Turkish, Japanese, Polish
Auto adjustment	Yes
De-interlace	Yes
Environment	
Supply voltage	100 – 240 VAC
Power consumption	Max. 35W in "On" mode Max. 5W in powersaving mode
Safety	CE, RoHS, UL/CUL, FCC-DOC
Dimension, W x H x D (excl. stand)	430 x 420 x 360 mm
Weight	6.0 kg

Connections

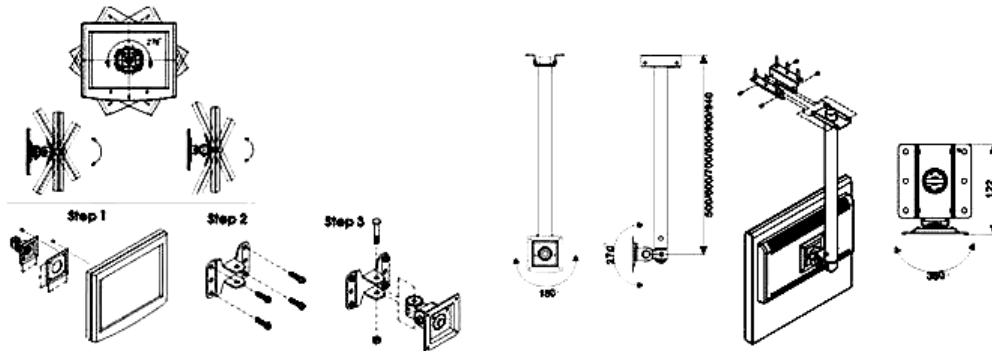


Accessories

There are two optional mounting brackets available for the monitor. These are a wall mount bracket, MONITOR WB, and a ceiling mount bracket, MONITOR CB.

Specifications for accessories

	MONITOR WB	MONITOR CB
VESA Mount	Yes, 75x75x75 mm and 100x100x100 mm	
Swivel left and right	180°	360°
Pivot	180°	135°
LCD Monitor rotation	270°	180°
Pole rotation	N/A	180°
Adjustable length	N/A	500/600/700/800/900/940 mm
Pole diameter	N/A	30 mm
Max. load	15 kg	
Weight	0.5 kg	2.6 kg



MONITOR WB

MONITOR CB

Ordering information

Product name	Order number	Description
MONITOR A19C1	0081-00020	19" Monitor with composite, VGA and HDMI
MONITOR WB	0081-01001	VESA Wall mount bracket for monitor
MONITOR CB	0081-01002	VESA Ceiling mount bracket for monitor



Denmark Head Office

Ernitec A/S
Hørkær 24
2730 Herlev
Denmark
Phone: +45 44 50 33 00
Fax: +45 44 50 33 33
info@ernitec.dk
www.ernitec.com

French Branch Office

Ernitec France
N° 29 Parc Club du Millenaire
1025 Rue Henri Becquerel
34036 Montpellier cedex 1
France
Phone: +33 (0)467 151 015
Fax: +33 (0)467 640 181
info@ernitec.fr
www.ernitec.com

German Branch Office

Ernitec GmbH
Stormarnring 28
22145 Stapelfeld
Germany
Phone: +49(0)(40)6756250
Fax: +49(0)(40)67562525
info@ernitec.de
www.ernitec.com

UK Branch Office

Ernitec UK
Columbia House
Columbia Drive
Worthing
West Sussex BN13 3HD
UK
Phone: +44 (0)1903263125
Fax: +44 (0)1903263126
info@ernitec.co.uk
www.ernitec.com