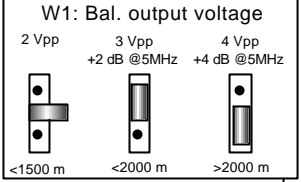
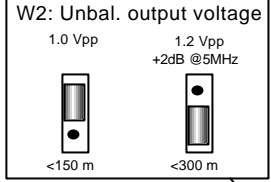
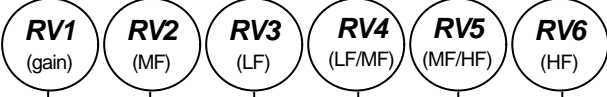


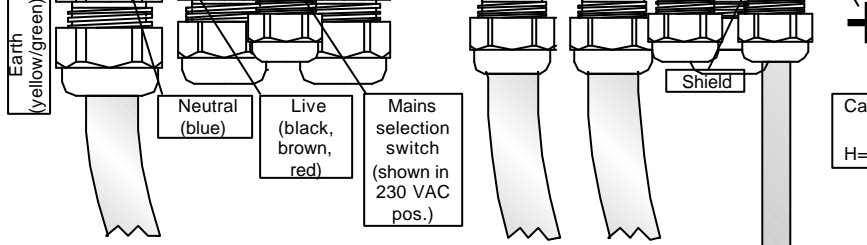
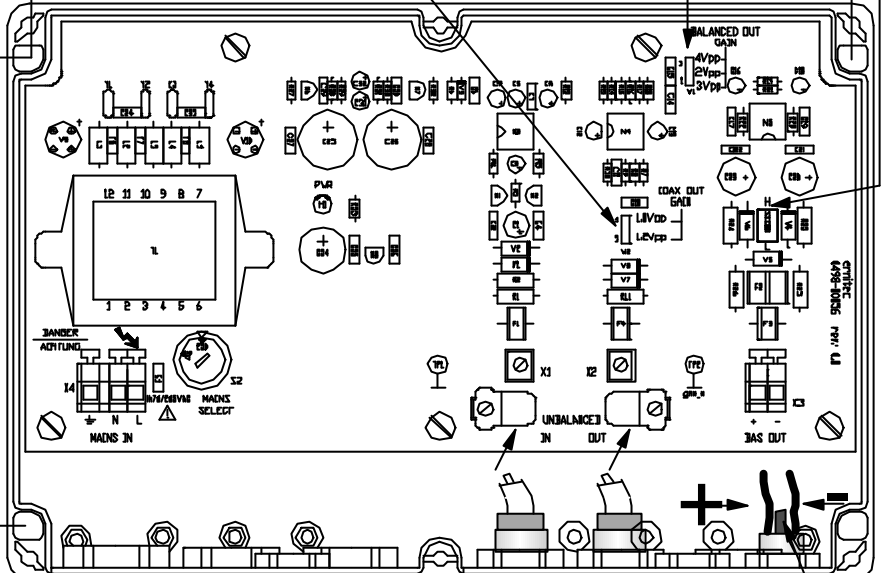
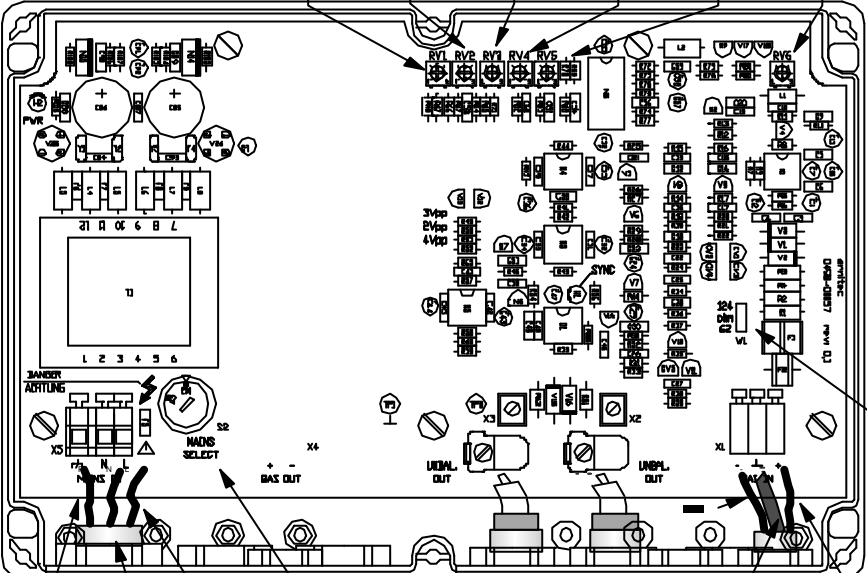
# BVR-225

# BVT-225



Cable impedance setting  
H=124 Ω, L=62 Ω

Drilling dimensions: 228 mm



Cable impedance setting  
H=124 Ω, L=62 Ω

Shield: DO NOT CONNECT!



Local monitor (optional)

Up to +2000 meters twisted pair cable

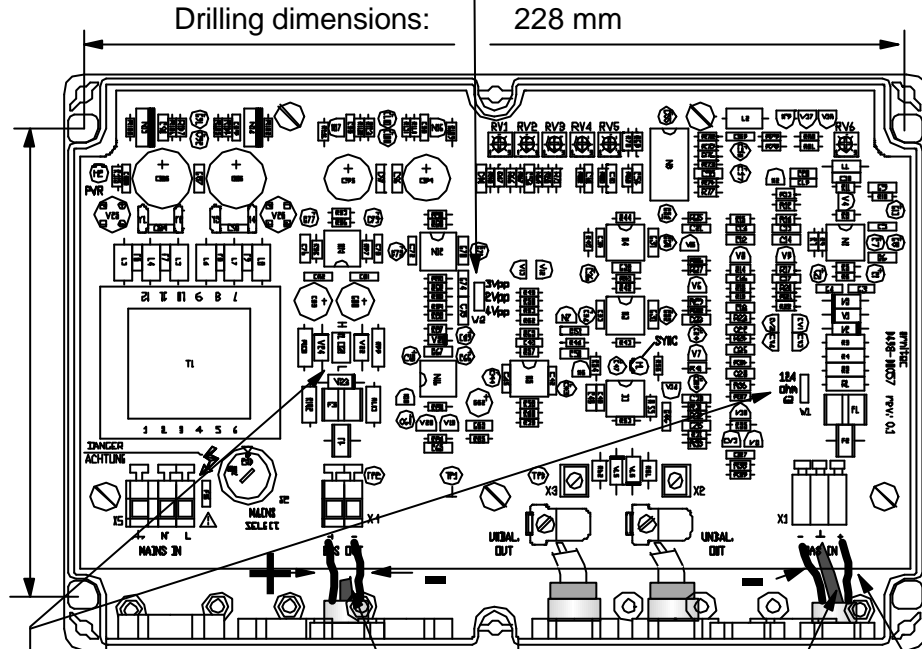
130 mm

# BVX-225

W2: Balanced output voltage

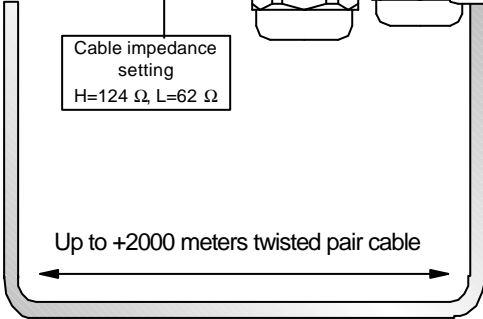
2 Vpp	3 Vpp	4 Vpp
+2 dB @5MHz	+2 dB @5MHz	+4 dB @5MHz

<1500 m      <2000 m      >2000 m



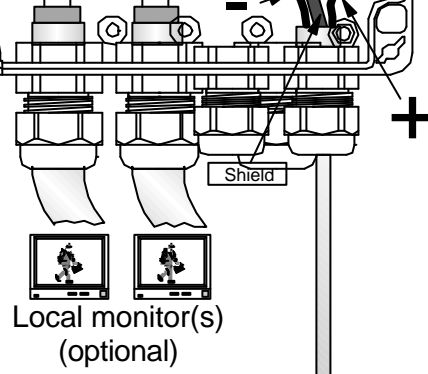
# BVR-225

Cable impedance setting  
H=124 Ω, L=62 Ω

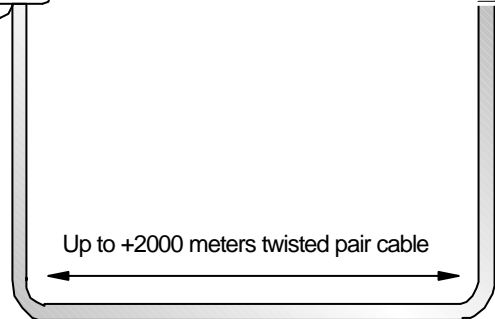


Up to +2000 meters twisted pair cable

Shield:  
DO NOT  
CONNECT!



# BVT-225



Up to +2000 meters twisted pair cable